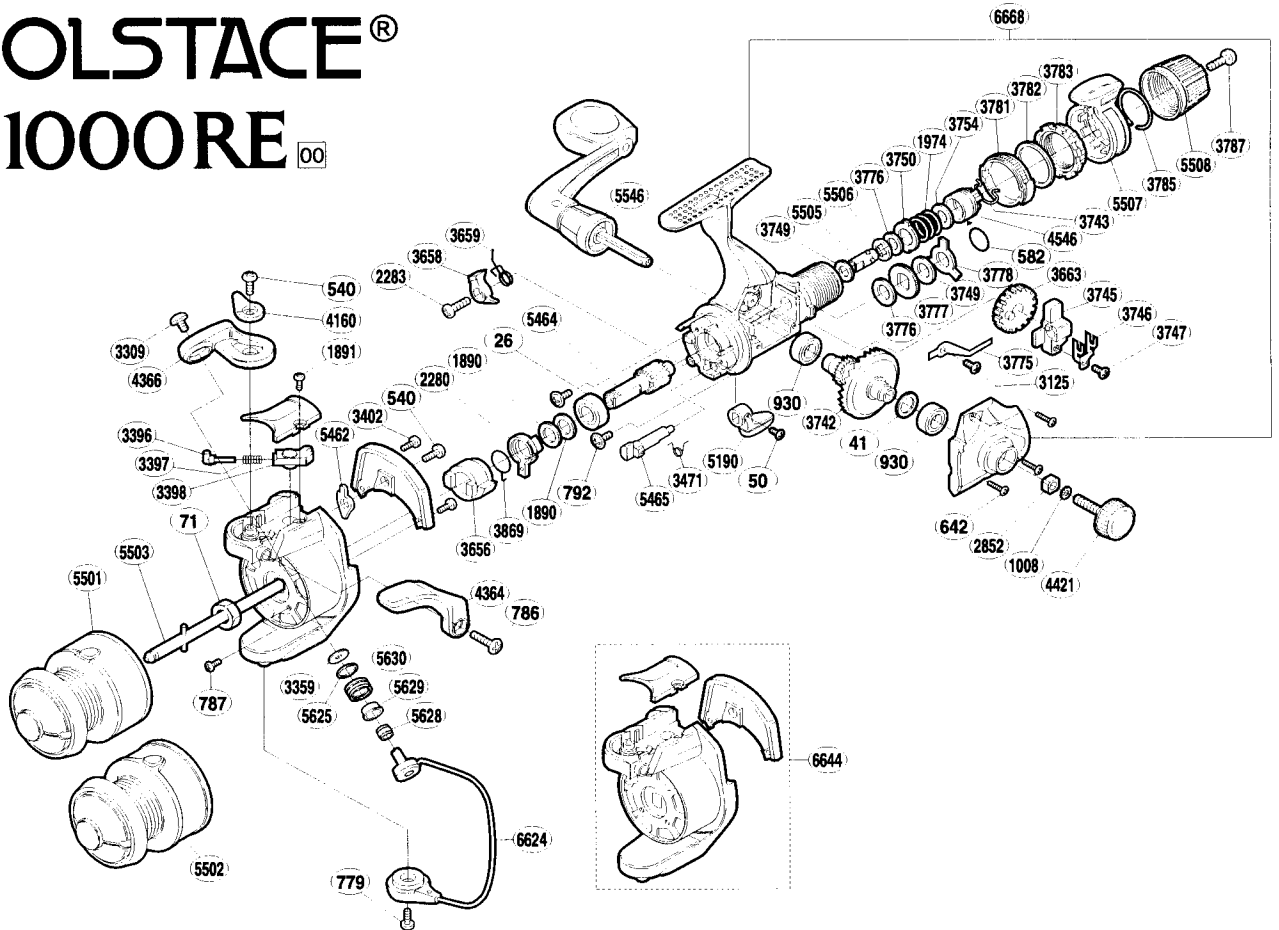


SOLSTACE® 1000RE 00



Part No.	Description
RD 0026	Ball Bearing
RD 0041	Drive Gear Washer
RD 0050	Anti-Reverse Lever Screw
RD 0071	Rotor Nut
RD 0540	Multi-Purpose Screw
RD 0582	iOf Ring
RD 0642	Side Cover Screw
RD 0779	Bail Hold Support Screw
RD 0786	Trigger Screw
RD 0787	Nut Lock Screw
RD 0792	Bearing Retainer Screw
RD 0930	Ball Bearing
RD 1008	Handle Lock Washer
RD 1890	Bushing Washer
RD 1891	Bail Spring Cover Screw
RD 1974	Drag Coil Spring
RD 2280	Anti-Reverse Lock Out
RD 2283	Anti-Reverse Pawl Screw
RD 2852	Handle Screw Lock
RD 3125	Drag Click Screw
RD 3309	Line Roller Screw
RD 3359	Line Roller Washer
RD 3396	Bail Spring Guide (A)
RD 3397	Bail Spring
RD 3398	Bail Spring Guide (B)

Part No.	Description
RD 3402	Cover Screw
RD 3471	Anti-Reverse Cam Spring
RD 3656	Anti-Reverse Ratchet
RD 3658	Anti-Reverse Pawl
RD 3659	Anti-Reverse Pawl Spring
RD 3663	Oscillating Gear
RD 3742	Drive Gear
RD 3743	Hold Click Spring
RD 3745	Oscillating Slider
RD 3746	Oscillating Slider Retainer
RD 3747	Slider Retainer Screw
RD 3749	Drag Washer iCí (white)
RD 3750	Eared Washer iBî
RD 3754	Drag Spring Washer
RD 3775	Drag Click
RD 3776	Drag Washer iCí (cloth)
RD 3777	Click Gear
RD 3778	Eared Washer iBFî
RD 3781	Lever Click Gear
RD 3782	Fightini Pressure Screw Washer
RD 3783	Fightini Pressure Screw
RD 3785	Lever Hold Spring
RD 3787	Drag Programmer Screw
RD 3869	Anti-Reverse Lock Out Spring
RD 4160	Trigger Cam

Part No.	Description
RD 4364	Quick-Fire II Trigger
RD 4366	Bail Arm
RD 4421	Handle Screw Cap
RD 4546	Pressure Screw
RD 5190	Anti-Reverse Lever
RD 5462	Bail Trip Lever
RD 5464	Pinion Gear
RD 5465	Anti-Reverse Cam
RD 5501	Spool Assembly (aluminum)
RD 5502	Spool Assembly (graphite)
RD 5503	Main Shaft
RD 5505	Drag Shaft (A)
RD 5506	Drag Shaft (B)
RD 5507	Fightini Drag Lever
RD 5508	Drag Programmer
RD 5546	Handle Assembly
RD 5625	Line Roller Spacer
RD 5628	Line Roller Collar
RD 5629	Line Roller Bushing
RD 5630	Line Roller
RD 6624	Bail Assembly
RD 6644	Rotor Assembly
RD 6668	Body Assembly