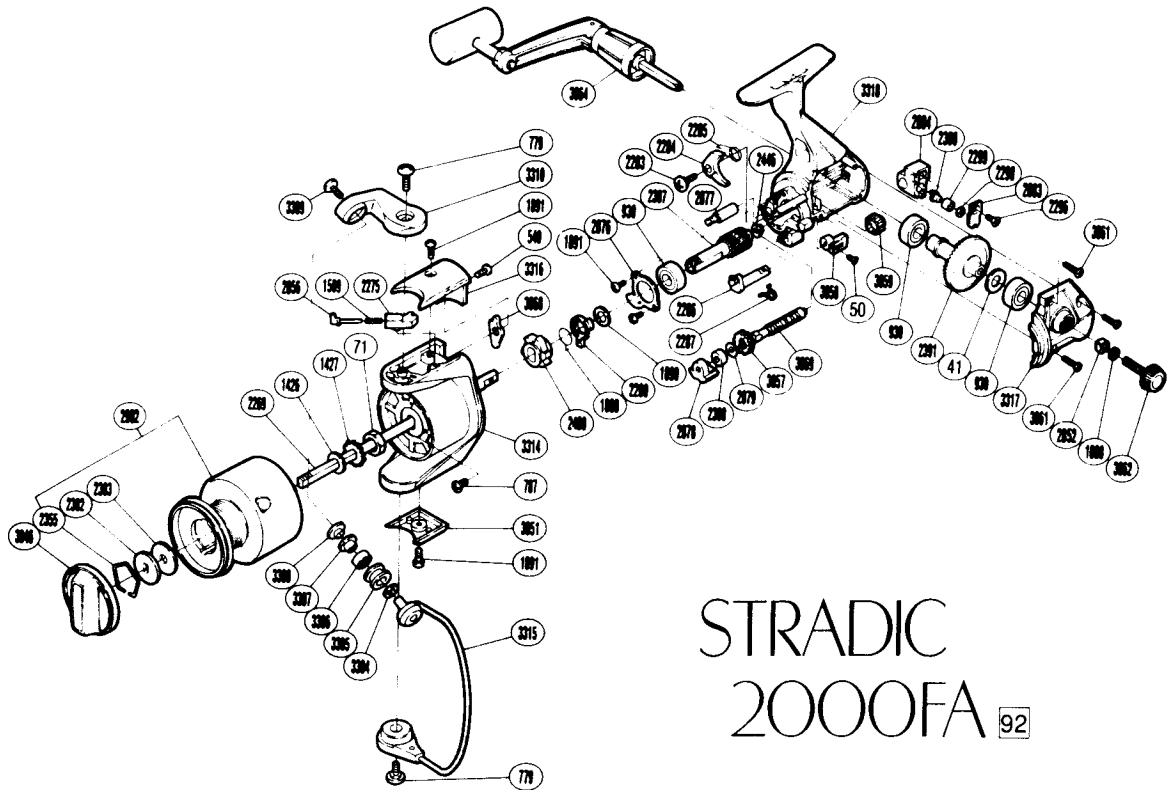


SHIMANO®

1992 REPAIR MANUAL

Shimano American Corporation, One Shimano Dr.
Irvine, CA 92718



STRADIC 2000FA 92

RD No.	PARTS NAMES	RD No.	PARTS NAMES	RD No.	PARTS NAMES
0041	Drive Gear Washer	2300	Oscillating Pawl	3064	Handle Assembly
0050	Anti-Reverse Lever Screw	2355	Drag Washers Retainer	3068	Bail Trip Lever
0071	Rotor Nut	2382	Key Washer	3069	Worm Shaft
0540	Bail Trip Lever Screw	2383	Drag Washer	3304	Bearing Spacer
0779	Bail Trip Cam Screw	2387	Pinion Gear	3305	SiC Ceramic Roller
0787	Nut Lock Screw	2388	Ball Bearing	3306	Line Roller Bearing
0930	Ball Bearing	2391	Drive Gear	3307	Line Roller Bushing
1008	Handle Lock Washer	2446	Bushing	3308	Line Roller Washer
1426	Spool Washer	2480	Anti-Reverse Ratchet	3309	Line Roller Screw
1427	Spool Support	2852	Handle Screw Lock	3310	Bail Arm
1509	Bail Spring	2856	Bail Spring Guide (A)	3314	Rotor
1888	Anti-Reverse Lock Out Spring	2876	Bearing Retainer	3315	Bail Assembly
1890	Bushing Washer	2877	Idle Gear (B) Shaft	3316	Bail Spring Cover
1891	Multi Purpose Screw	2878	Worm Bearing	3317	Side Cover
2269	Main Shaft	2879	Worm Shaft Spacer	3318	Body
2275	Bail Spring Guide (B)	2883	Oscillating Pawl Cover		
2280	Anti-Reverse Lock Out	2884	Oscillating Slider		
2283	Anti-Reverse Pawl Screw	2902	Spool Assembly		
2284	Anti-Reverse Pawl	3046	Drag Knob		
2285	Anti-Reverse Pawl Spring	3051	Rotor Side Cover		
2286	Anti-Reverse Cam	3057	Idle Gear (A)		
2287	Anti-Reverse Cam Spring	3058	Anti-Reverse Lever		
2296	Slider Retainer Screw	3059	Idle Gear (B)		
2298	Spacer	3061	Side Cover Screw		
2299	Oscillating Slider Bushing	3062	Handle Screw Cap		

Prices and specifications subject to change without notice

(030314)