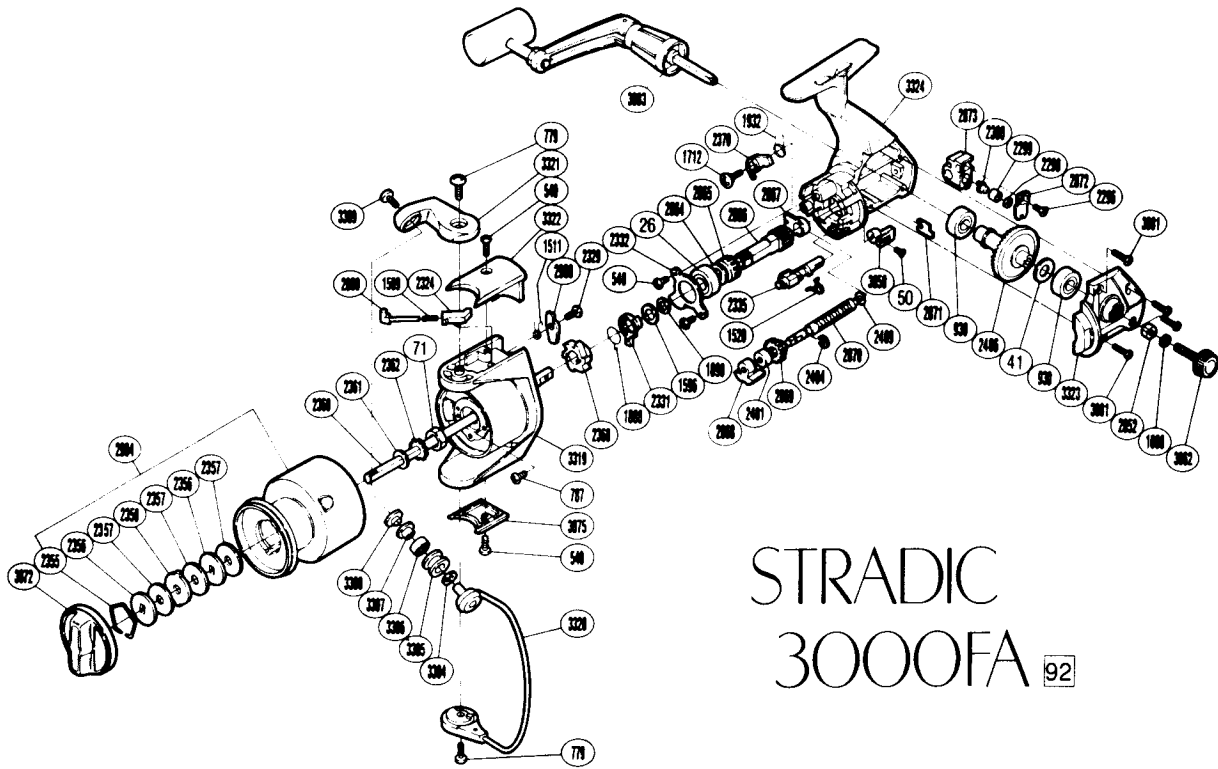


# SHIMANO®

## 1992 REPAIR MANUAL

Shimano American Corporation, One Shimano Dr.  
Irvine, CA 92718



## STRADIC 3000FA 92

RD No.	PARTS NAMES	RD No.	PARTS NAMES	RD No.	PARTS NAMES
0026	Ball Bearing	2335	Anti-Reverse Cam	2873	Oscillating Slider
0041	Drive Gear Washer	2355	Drag Washers Retainer	2904	Spool Assembly
0050	Anti-Reverse Lever Screw	2356	Key Washer	2969	Bail Trip Lever
0071	Rotor Nut	2357	Drag Washer	3058	Anti-Reverse Lever
0540	Multi Purpose Screw	2358	Eared Washer	3062	Handle Screw Cap
0779	Bail Trip Cam Screw	2360	Main Shaft	3072	Drag Knob
0787	Nut Lock Screw	2361	Spool Washer	3075	Rotor Side Cover
0930	Ball Bearing	2362	Spool Support	3081	Side Cover Screw
1008	Handle Lock Washer	2368	Anti-Reverse Ratchet	3083	Handle Assembly
1509	Bail Spring	2370	Anti-Reverse Pawl	3304	Bearing Spacer
1511	Lever Spring	2401	Ball Bearing	3305	SiC Ceramic Roller
1520	Anti-Reverse Cam Spring	2404	Idle Gear Retainer	3306	Line Roller Bearing
1596	Bushing Washer	2406	Drive Gear	3307	Line Roller Bushing
1712	Anti-Reverse Pawl Screw	2409	Worm Shaft Spacer	3308	Line Roller Washer
1888	Anti-Reverse Lock Out Spring	2852	Handle Screw Lock	3309	Line Roller Screw
1890	Bushing Washer	2860	Bail Spring Guide (A)	3319	Rotor
1932	Anti-Reverse Pawl Spring	2864	Pinion Idle Gear Washer	3320	Bail Assembly
2296	Slider Retainer Screw	2865	Pinion Idle Gear	3321	Bail Arm
2298	Spacer	2866	Pinion Gear	3322	Bail Spring Cover
2299	Oscillating Slider Bushing	2867	Bushing	3323	Side Cover
2300	Oscillating Pawl	2868	Worm Bearing	3324	Body
2324	Bail Spring Guide (B)	2869	Idle Gear		
2329	Bail Trip Lever Screw	2870	Worm Shaft		
2331	Anti-Reverse Lock Out	2871	Worm Shaft Retainer		
2332	Bearing Retainer	2872	Oscillating Pawl Cover		

Prices and specifications subject to change without notice

(030314)