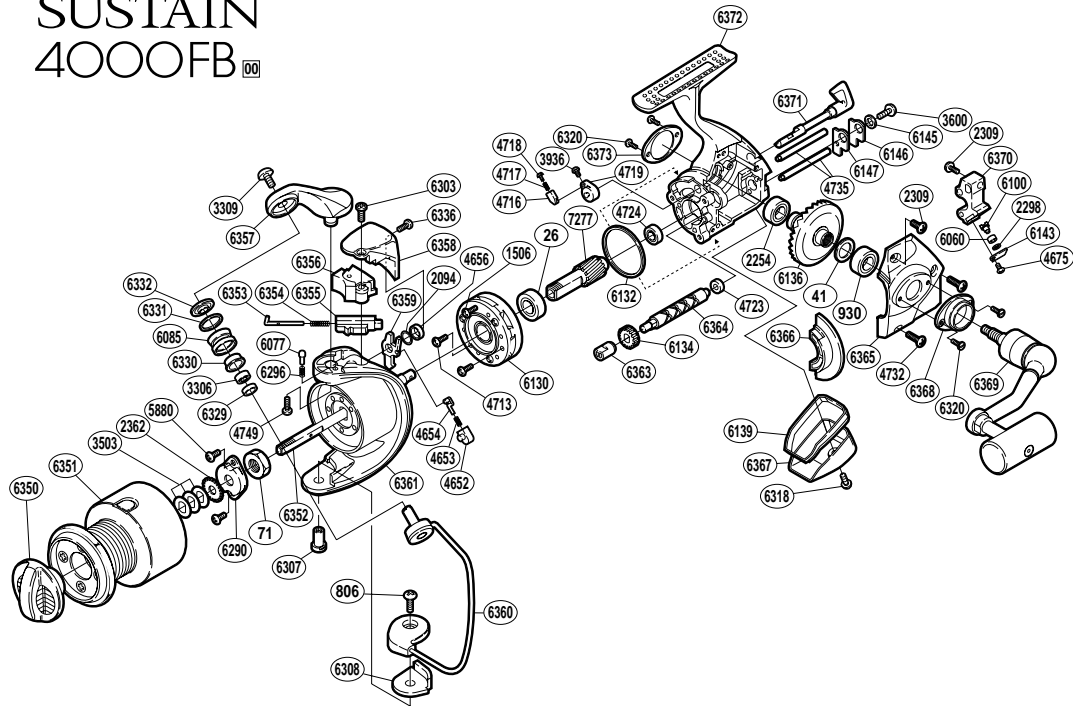


# SUSTAIN 4000FB



RD No.	PARTS NAMES	RD No.	PARTS NAMES	RD No.	PARTS NAMES
0026	Ball Bearing	4724	Ball Bearing	6331	Line Roller Spacer
0041	Drive Gear Washer	4732	Side Cover Screw	6332	Line Roller Washer
0071	Rotor Nut	4735	Oscillating Guide	6336	Protector Screw (B)
0806	Bail Hold Support Screw	4749	Bail Arm Screw	6350	Drag Knob
0930	Ball Bearing	5880	Nut Lock Screw	6351	Spool Assembly
1506	Clutch Cover Screw	6060	Oscillating Slider Bushing	6352	Main Shaft
2094	Spacer	6077	Click Pin	6353	Bail Spring Guide (A)
2254	Ball Bearing	6085	Line Roller	6354	Bail Spring
2298	Spacer	6100	Oscillating Pawl	6355	Bail Spring Guide (B)
2309	Multi-Purpose Screw	6130	Roller Clutch Assembly	6356	Bail Spring Cover
2362	Spool Support	6132	Friction Ring	6357	Bail Arm
3306	Ball Bearing	6134	Idle Gear	6358	Rotor Protector
3309	Line Roller Screw	6136	Drive Gear	6359	Bail Trip Lever
3503	Spool Washer	6139	Rear Shield	6360	Bail Assembly
3600	Worm Shaft Retainer Screw	6143	Oscillating Pawl Cover	6361	Rotor
3936	Anti-Reverse Cam Screw	6145	Worm Shaft Retainer Spacer	6363	Worm Bushing (front)
4652	Lever Spring Guide (B)	6146	Worm Shaft Retainer	6364	Worm Shaft
4653	Lever Spring	6147	Worm Shaft Retainer Washer	6365	Side Cover
4654	Lever Spring Guide (A)	6290	Rotor Nut Lock Plate	6366	Side Cover Flange
4656	Trip Lever Spacer	6296	Click Spring	6367	Rear Protector
4675	Oscillating Pawl Cover Screw	6303	Protector Screw (A)	6368	Handle Screw Cap (A)
4713	Roller Clutch Screw	6307	Bail Hold Support Shaft	6369	Handle Assembly
4716	Lever Spring Guide (B)	6308	Bail Hold Support Spacer	6370	Oscillating Slider
4717	Lever Spring	6318	Rear Protector Screw	6371	Anti-Reverse Lever
4718	Lever Spring Guide (A)	6320	Cap Screw	6372	Body
4719	Anti-Reverse Cam	6329	Bearing Spacer	6373	Handle Screw Cap (B)
4723	Worm Bushing (rear)	6330	Line Roller Bushing	7277	Pinion Gear