

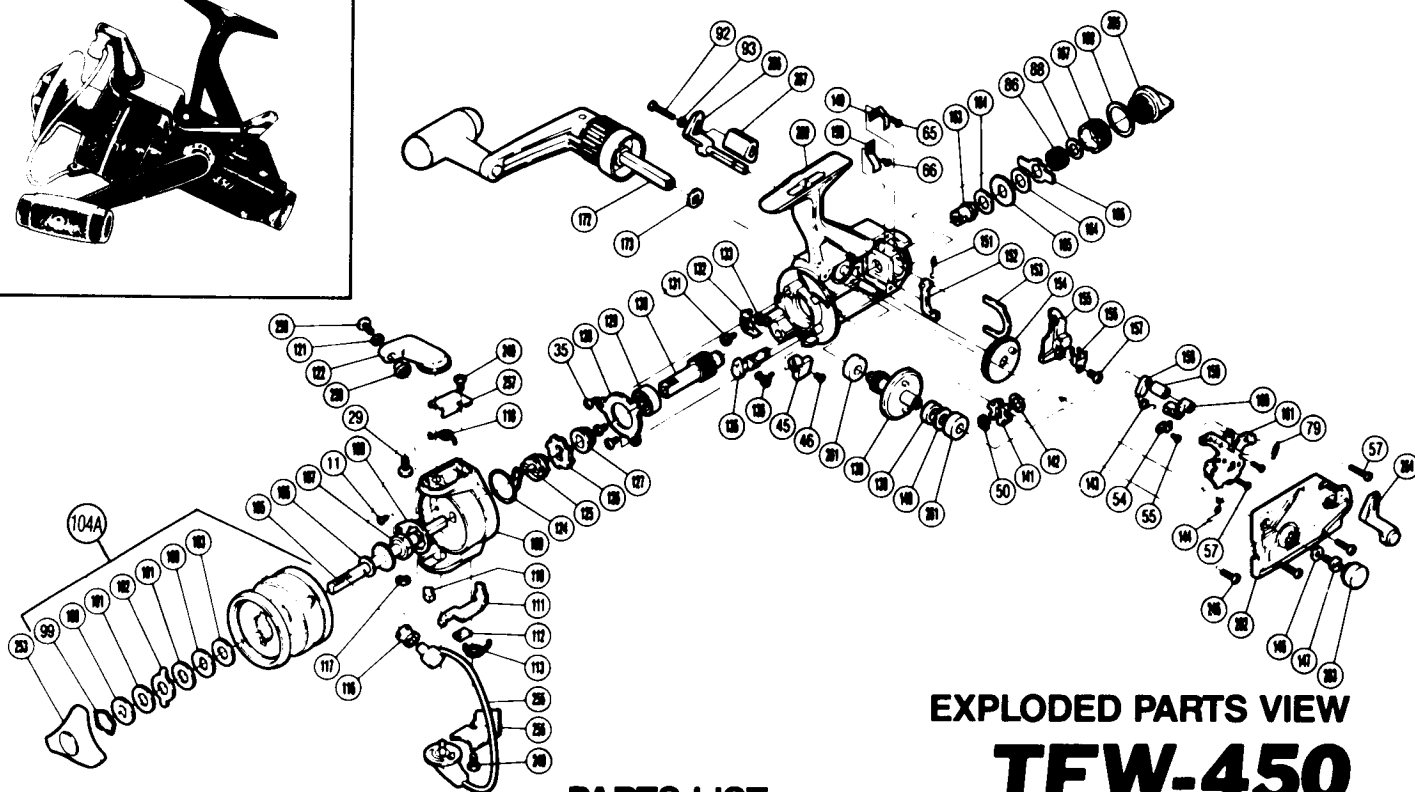
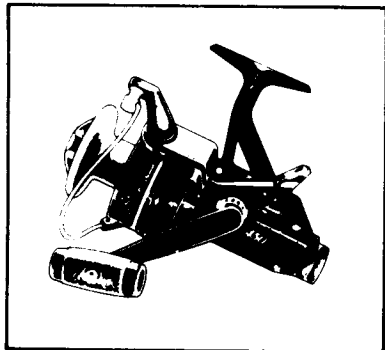
# SHIMANO®

## 1987 REPAIR MANUAL

Shimano American Corporation, One Shimano Dr.  
Irvine, CA 92718

### TO ORDER:

This reel belongs to the "BaitRunner" series.  
Please order parts using the abbreviation  
"BR" and the part number.



### EXPLODED PARTS VIEW

## TFW-450

### PARTS LIST

#### PART # DESCRIPTION

- 11. Nut Lock Screw
- 29. Bail Arm Screw
- 35. Bearing Retainer Screw
- 45. Anti-Reverse Lever
- 46. Anti-Reverse Lever Screw
- 50. "C" Lock
- 54. Lever Shaft Retainer
- 55. Shaft Retainer Screw
- 57. Multi Purpose Screw
- 65. Dial Click Screw
- 66. Pawl Guide Screw
- 79. BaitRunner Click Spring
- 86. Free Spool Tension Spring
- 88. Tension Spring Washer "B"
- 92. BaitRunner Lever Screw
- 93. Lock Washer
- 99. Drag Washers Retainer
- 100. Key Washer
- 101. Drag Washer 1
- 102. Eared Washer
- 103. Drag Washer 2
- 104A. Spool Assembly (Universal)
- 105. Main Shaft
- 106. Spool Washer
- 107. Rotor Nut
- 108. Rotor Nut Lock Plate
- 109. Rotor
- 110. Bail Trip Slide Cam
- 111. Bail Trip Lever
- 112. Trip Lever Guide
- 113. Lever Spring
- 116. Line Roller
- 117. "E" Lock

#### PART # DESCRIPTION

- 118. Ball Spring
- 121. Lock Washer
- 122. Bail Arm
- 124. Anti-Reverse Pawl Spring
- 125. Anti-Reverse Spring Holder
- 126. Anti-Reverse Ratchet
- 127. Pinion Spacer
- 128. Bearing Retainer
- 129. Ball Bearing
- 130. Pinion Gear
- 131. Anti-Reverse Pawl Screw
- 132. Anti-Reverse Pawl
- 133. Anti-Reverse Pawl Spacer
- 135. Anti-Reverse Cam
- 136. Anti-Reverse Cam Spring
- 138. Drive Gear
- 139. Drive Gear Spacer
- 140. Drive Gear Washer
- 141. BaitRunner Ratchet
- 142. Ratchet Spacer
- 143. Clutch Spring
- 144. Clutch Pawl Spring
- 146. Handle Lock Washer
- 147. Handle Lock Pawl
- 149. Dial Click
- 150. BaitRunner Pawl Guide
- 151. BaitRunner Pawl Spring
- 152. BaitRunner Pawl
- 153. Dial Retainer
- 154. Oscillating Gear
- 155. Oscillating Slider

#### PART # DESCRIPTION

- 156. Oscillating Slider Retainer
- 157. Slider Retainer Screw
- 158. Clutch Cam
- 159. Clutch Cam Spacer
- 160. Clutch Arm
- 161. Clutch Plate Assembly
- 163. Free Spool Tension Shaft
- 164. Free Spool Tension Washer
- 165. Click Gear
- 166. Eared Washer "Bfs"
- 167. Free Spool Tension Screw
- 168. Dial Spacer
- 172. Handle Assembly
- 173. Handle Lock Spacer
- 240. Bail Trip Cover Screw
- 246. Side Cover Screw A
- 253. Drag Knob
- 255. Bail Assembly
- 256. Bail Trip Cover
- 257. Bail Spring Cover
- 258. Line Roller Screw
- 259. Line Roller Washer
- 260. Body
- 261. Bushing
- 262. Side Cover
- 263. Handle Screw Cap
- 264. BaitRunner Lever Arm (L)
- 265. BaitRunner Tension Dial
- 266. BaitRunner Lever Arm (R)
- 267. BaitRunner Lever Bridge