

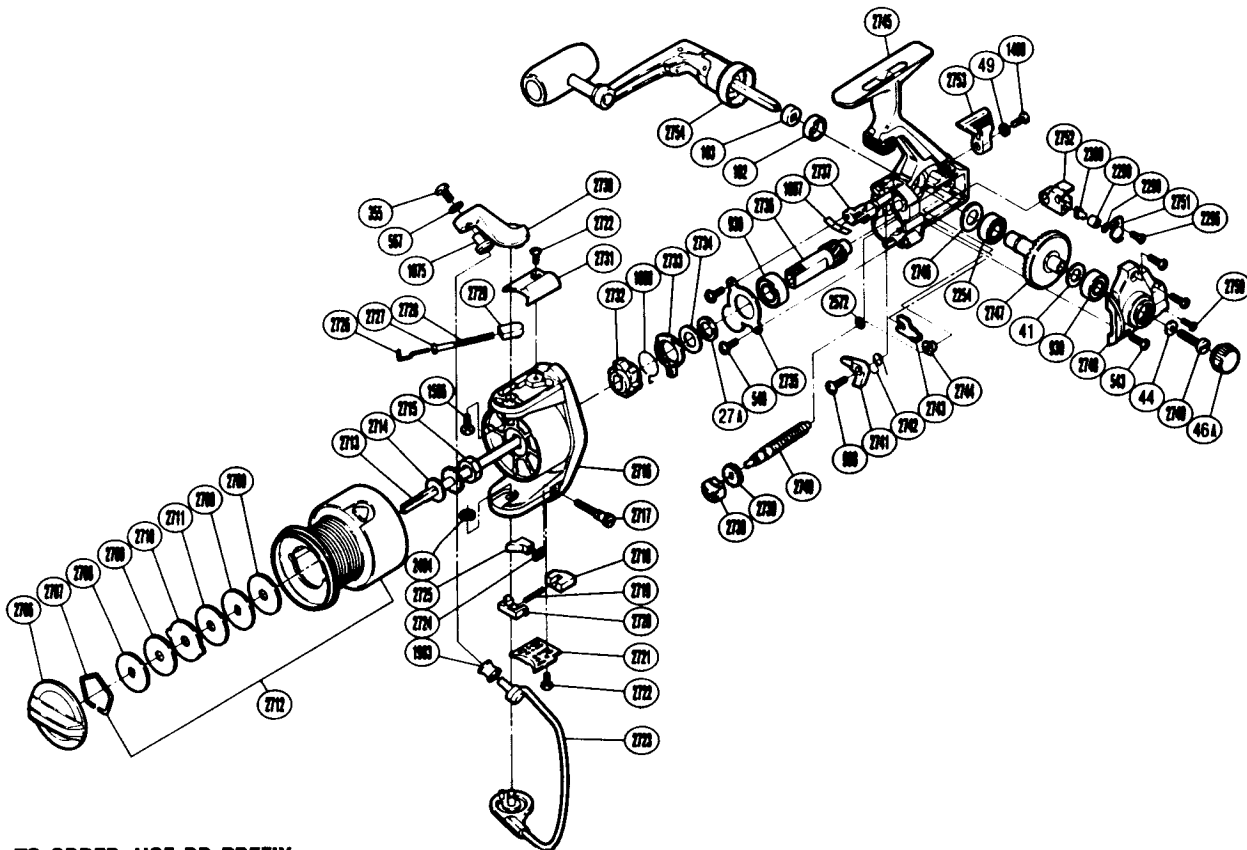
**EXPLODED PARTS VIEW**

**TITANOS  
BIOMASTER  
GT1000**

**SHIMANO®**

**1990 REPAIR MANUAL**

Shimano American Corporation, One Shimano Dr.  
Irvine, CA 92718



**TO ORDER: USE RD PREFIX  
WITH PART NUMBER**

**PARTS LIST**

| RD #  | DESCRIPTION                  | RD # | DESCRIPTION                  | RD # | DESCRIPTION                  |
|-------|------------------------------|------|------------------------------|------|------------------------------|
| 0027A | Pinion Spacer                | 2572 | Worm Shaft Spacer (Optional) | 2730 | Bail Arm                     |
| 0041  | Drive Gear Washer            | 2706 | Drag Knob                    | 2731 | Bail Spring Cover            |
| 0044  | Handle [Screw] Lock Washer   | 2707 | Drag Washers Retainer        | 2732 | Anti-Reverse Ratchet         |
| 0046A | Handle Screw Cap             | 2708 | Key Washer                   | 2733 | Anti-Reverse Lock Out        |
| 0049  | Lock Washer                  | 2709 | Drag Washer 1                | 2734 | Anti-Reverse Lock Out Spacer |
| 0102  | Handle Lock Ring             | 2710 | Eared Washer                 | 2735 | Bearing Retainer             |
| 0103  | Handle Lock Spacer           | 2711 | Drag Washer 2                | 2736 | Pinion Gear                  |
| 0355  | Line Roller Screw (Nylock)   | 2712 | Spool Assembly               | 2737 | Anti-Reverse Cam             |
| 0540  | Anti-Reverse Pawl Screw      | 2713 | Main Shaft                   | 2738 | Worm Bearing (Front)         |
| 0543  | Side Cover Screw (B)         | 2714 | Spool Washer                 | 2739 | Idle Gear                    |
| 0567  | Lock Washer                  | 2715 | Rotor Nut                    | 2740 | Worm Shaft                   |
| 0930  | Ball Bearing                 | 2716 | Rotor                        | 2741 | Anti-Reverse Pawl            |
| 0998  | Anti-Reverse Pawl Screw      | 2717 | Trip Adjustment Screw        | 2742 | Anti-Reverse Pawl Spring     |
| 1075  | Line Roller Washer           | 2718 | Trip Adjustment Guide        | 2743 | Worm Shaft Retainer          |
| 1490  | Anti-Reverse Lever Screw     | 2719 | Trip Adjustment Spring       | 2744 | Worm Bearing (Rear)          |
| 1506  | Bail Spring Cover Screw      | 2720 | Trip Adjustment Slider       | 2745 | Body                         |
| 1888  | Anti-Reverse Lock Out Spring | 2721 | Bail Trip Cover              | 2746 | Drive Gear Spacer            |
| 1897  | Anti-Reverse Cam Spring      | 2722 | Bail Spring Cover Screw      | 2747 | Drive Gear                   |
| 1983  | Sic Ceramic Roller           | 2723 | Bail Assembly                | 2748 | Side Cover                   |
| 2254  | Ball Bearing                 | 2724 | Adjustment Screw Retainer    | 2749 | Handle Lock Screw            |
| 2296  | Slider Retainer Screw        | 2725 | Trip Adjustment Cam          | 2750 | Side Cover Screw             |
| 2298  | Spacer                       | 2726 | Bail Spring Guide (A)        | 2751 | Oscillating Cover Screw      |
| 2299  | Oscillating Slider Bushing   | 2727 | Bail Spring Bushing          | 2752 | Oscillating Slider           |
| 2300  | Oscillating Pawl             | 2728 | Bail Spring                  | 2753 | Anti-Reverse Lever           |
| 2404  | Idle Gear Retainer           | 2729 | Bail Spring Guide (B)        | 2754 | Handle Assembly              |

Prices and specifications subject to change without notice.