

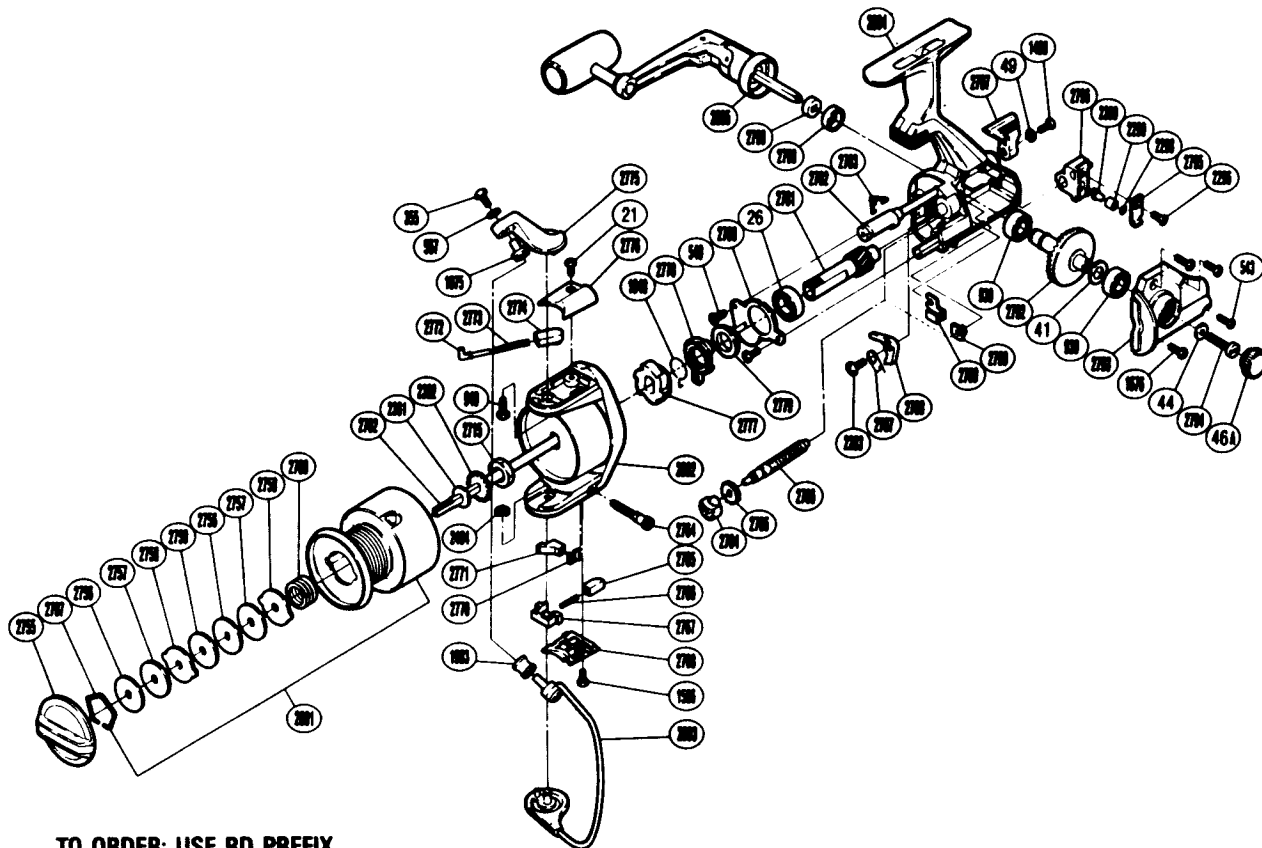
**EXPLODED PARTS VIEW**

**TRANCE  
BIOMASTER  
GT3000** 

**SHIMANO®**

**1990 REPAIR MANUAL**

Shimano American Corporation, One Shimano Dr.  
Irvine, CA 92718



**TO ORDER: USE RD PREFIX  
WITH PART NUMBER**

**PARTS LIST**

RD #	DESCRIPTION	RD #	DESCRIPTION	RD #	DESCRIPTION
0026	Ball Bearing	2707	Drag Washers Retainer	2780	Bearing Retainer
0041	Drive Gear Washer	2715	Rotor Nut	2781	Pinion Gear
0044	Handle (Screw) Lock Washer	2755	Drag Knob	2782	Anti-Reverse Cam
0046A	Handle Screw Cap	2756	Key Washer	2783	Anti-Reverse Cam Spring
0049	Lock Washer	2757	Drag Washer 1	2784	Worm Bearing (Front)
0355	Line Roller Screw (Nylock)	2758	Eared Washer	2785	Idle Gear
0540	Anti-Reverse Pawl Screw	2759	Drag Washer 2	2786	Worm Shaft
0543	Side Cover Screw (B)	2760	Drag Coil Spring	2787	Anti-Reverse Pawl Spring
0567	Lock Washer	2762	Main Shaft	2788	Anti-Reverse Pawl
0930	Ball Bearing	2764	Trip Adjustment Screw	2789	Worm Shaft Retainer
0940	Bail Trip Cam Screw	2765	Trip Adjustment Guide	2790	Worm Bearing (Rear)
1075	Line Roller Washer	2766	Trip Adjustment Spring	2792	Drive Gear
1490	Anti-Reverse Lever Screw	2767	Trip Adjustment Slider	2793	Side Cover
1506	Bail Spring Cover Screw	2768	Bail Trip Cover	2794	Handle Lock Screw
1676	Side Cover Screw	2770	Adjustment Screw Retainer	2795	Oscillating Pawl Cover
1948	Anti-Reverse Lock Out Spring	2771	Trip Adjustment Cam	2796	Oscillating Slider
1983	Sic Ceramic Roller	2772	Bail Spring Guide (A)	2797	Anti-Reverse Lever
2283	Anti-Reverse Pawl Screw	2773	Bail Spring	2798	Handle Lock Ring
2296	Slider Retainer Screw	2774	Bail Spring Guide (B)	2799	Handle Lock Spacer
2298	Spacer	2775	Bail Arm	2801	Spool Assembly
2299	Oscillating Slider Bushing	2776	Bail Spring Cover	2802	Rotor
2300	Oscillating Pawl	2777	Anti-Reverse Ratchet	2803	Bail Assembly
2361	Spool Washer	2778	Anti-Reverse Lock Out	2804	Body
2362	Spool Support	2779	Pinion Spacer	2805	Handle Assembly

Prices and specifications subject to change without notice.