

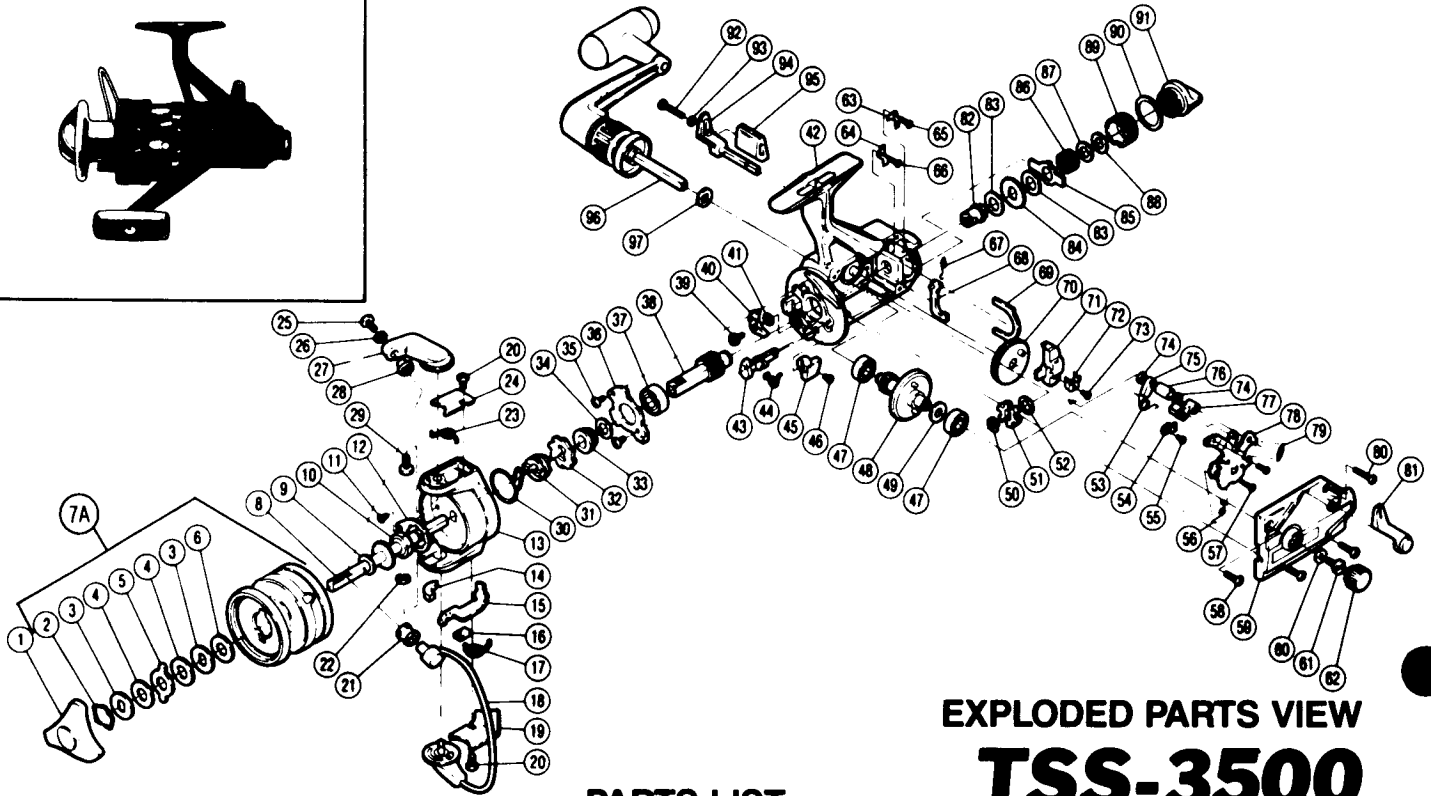
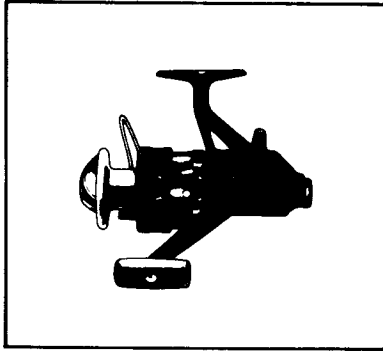
# SHIMANO®

## 1987 REPAIR MANUAL

Shimano American Corporation, One Shimano Dr.  
Irvine, CA 92718

### TO ORDER:

This reel belongs to the "BaitRunner" series.  
Please order parts using the abbreviation  
"BR" and the part number.



## EXPLODED PARTS VIEW TSS-3500

### PARTS LIST

#### PART # DESCRIPTION

1. Drag Knob
2. Drag Washers Retainer
3. Key Washer
4. Drag Washer 1
5. Eared Washer
6. Drag Washer 2
- 7A. Spool Assembly (Universal)
8. Main Shaft
9. Spool Washer
10. Rotor Nut
11. Nut Lock Screw
12. Rotor Nut Lock Plate
13. Rotor
14. Bail Trip Slide Cam
15. Bail Trip Lever
16. Trip Lever Guide
17. Lever Spring
18. Bail Assembly
19. Bail Trip Cover
20. Bail Trip Cover Screw
21. Line Roller
22. "E" Lock
23. Bail Spring
24. Bail Spring Cover
25. Line Roller Screw
26. Lock Washer
27. Bail Arm
28. Line Roller Washer
29. Bail Arm Screw
30. Anti-Reverse Pawl Spring
31. Anti-Reverse Spring Holder
32. Anti-Reverse Ratchet
33. Pinion Spacer

#### PART # DESCRIPTION

34. Bushing Washer
35. Bearing Retainer Screw
36. Bearing Retainer
37. Ball Bearing
38. Pinion Gear
39. Anti-Reverse Pawl Screw
40. Anti-Reverse Pawl
41. Anti-Reverse Pawl Spacer
42. Body
43. Anti-Reverse Cam
44. Anti-Reverse Cam Spring
45. Anti-Reverse Lever
46. Anti-Reverse Lever Screw
47. Ball Bearing
48. Drive Gear
49. Drive Gear Washer
50. "C" Lock
51. BaitRunner Ratchet
52. Ratchet Spacer
53. Clutch Spring
54. Lever Shaft Retainer
55. Shaft Retainer Screw
56. Clutch Pawl Spring
57. Clutch Plate Screw
58. Side Cover Screw A
59. Side Cover
60. Handle Lock Washer
61. Handle Lock Screw
62. Handle Screw Cap
63. Dial Click
64. BaitRunner Pawl Guide
65. Dial Click Screw

#### PART # DESCRIPTION

66. Pawl Guide Screw
67. BaitRunner Pawl Spring
68. BaitRunner Pawl
69. Dial Retainer
70. Oscillating Gear
71. Oscillating Slider
72. Oscillating Slider Retainer
73. Slider Retainer Screw
74. Clutch Cam Spacer B
75. Clutch Cam
76. Clutch Cam Spacer A
77. Clutch Arm
78. Clutch Plate Assembly
79. BaitRunner Click Spring
80. Side Cover Screw B
81. BaitRunner Lever Arm (L)
82. Free Spool Tension Shaft
83. Free Spool Tension Washer
84. Click Gear
85. Eared Washer "Bfs"
86. Free Spool Tension Spring
87. Tension Spring Washer "A"
88. Tension Spring Washer "B"
89. Free Spool Tension Screw
90. Dial Spacer
91. BaitRunner Tension Dial
92. BaitRunner Lever Screw
93. Lock Washer
94. BaitRunner Lever Arm (R)
95. BaitRunner Lever Bridge
96. Handle Assembly
97. Handle Lock Spacer