

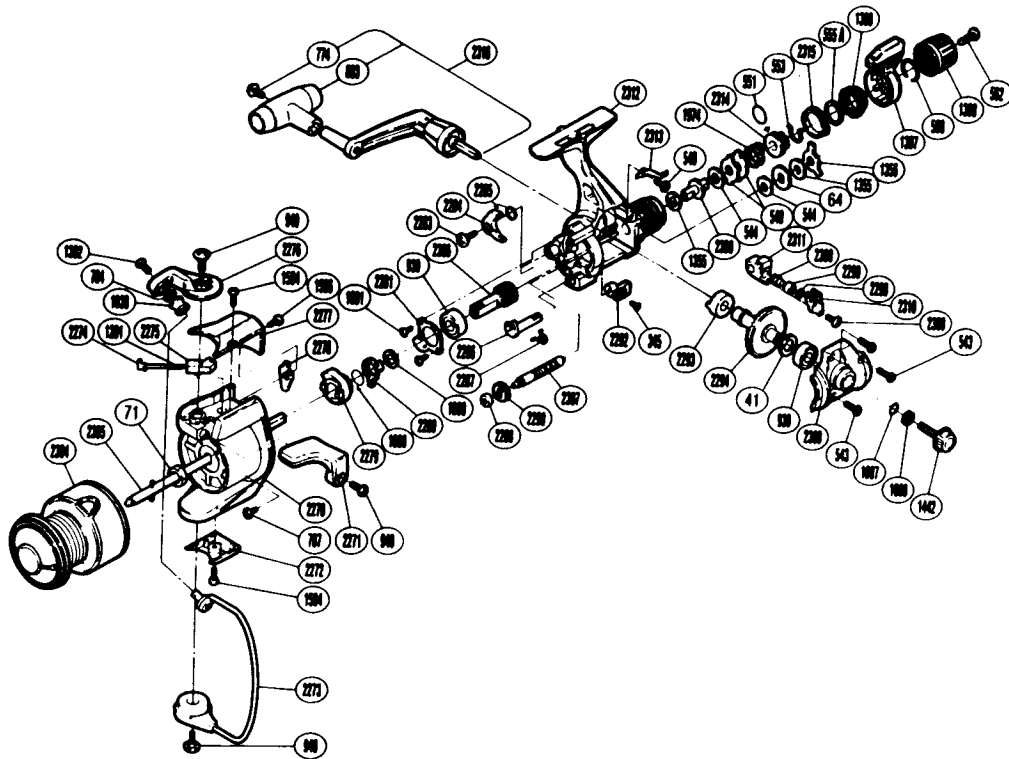
EXPLODED PARTS VIEW



SHIMANO®

1990 REPAIR MANUAL

Shimano American Corporation, One Shimano Dr.
Irvine, CA 92718



**TO ORDER: USE RD PREFIX
WITH PART NUMBER**

PARTS LIST

RD #	DESCRIPTION	RD #	DESCRIPTION	RD #	DESCRIPTION
0041	Drive Gear Washer	1356	Eared Washer "BF"	2285	Anti-Reverse Pawl Spring
0064	Click Gear	1360	Fightin' Pressure Screw	2286	Anti-Reverse Cam
0071	Rotor Nut	1397	Fightin' Drag II Lever	2287	Anti-Reverse Cam Spring
0345	Anti-Reverse Lever Screw	1398	Drag Programmer	2288	Worm Bearing
0540	Anti-Reverse Pawl Screw	1442	Handle Screw Cap	2290	Idle Gear
0543	Side Cover Screw [B]	1504	Bail Hold Cover Screw	2292	Anti-Reverse Lever
0544	Drag Washer "C2" (White)	1506	Bail Spring Cover Screw	2293	Drive Gear Bushing
0549	Eared Washer "B"	1888	Anti-Reverse Lock Out Spring	2294	Drive Gear
0551	"O" Ring	1890	Bushing Washer	2298	Spacer
0553	Hold Click Spring	1891	Multi Purpose Screw	2299	Oscillating Slider Bushing
0555A	Fightin' Pressure Screw Washer	1974	Drag Coil Spring	2300	Oscillating Pawl
0560	Lever Hold Spring	2270	Rotor	2304	Spool Assembly
0562	Drag Programmer Screw	2271	Quick-Fire II Trigger	2305	Main Shaft
0774	Handle Knob Screw	2272	Rotor Side Cover	2306	Pinion Gear
0784	Line Roller Washer	2273	Bail Assembly	2307	Worm Shaft
0787	Nut Lock Screw	2274	Bail Spring Guide [A]	2308	Side Cover
0803	Handle Knob	2275	Bail Spring Guide [B]	2309	Slider Retainer Screw
0930	Ball Bearing	2276	Bail Arm	2310	Oscillating Slider Retainer
0940	Bail Trip Cam Screw	2277	Bail Spring Cover	2311	Oscillating Slider
0949	Trigger Screw	2278	Bail Trip Lever	2312	Body
1007	Lock Washer Retainer	2279	Anti-Reverse Ratchet	2313	Drag Click
1008	Handle Lock Washer	2280	Anti-Reverse Lock Out	2314	Pressure Screw
1038	Sic Ceramic Roller	2281	Bearing Retainer	2315	Lever Click Gear
1201	Bail Spring	2283	Anti-Reverse Pawl Screw	2316	Handle Assembly
1302	Line Roller Screw	2284	Anti-Reverse Pawl	2380	Drag Shaft
1355	Drag Washer "C1"				

Prices and specifications subject to change without notice.