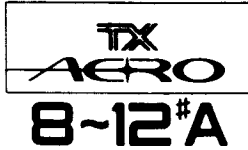


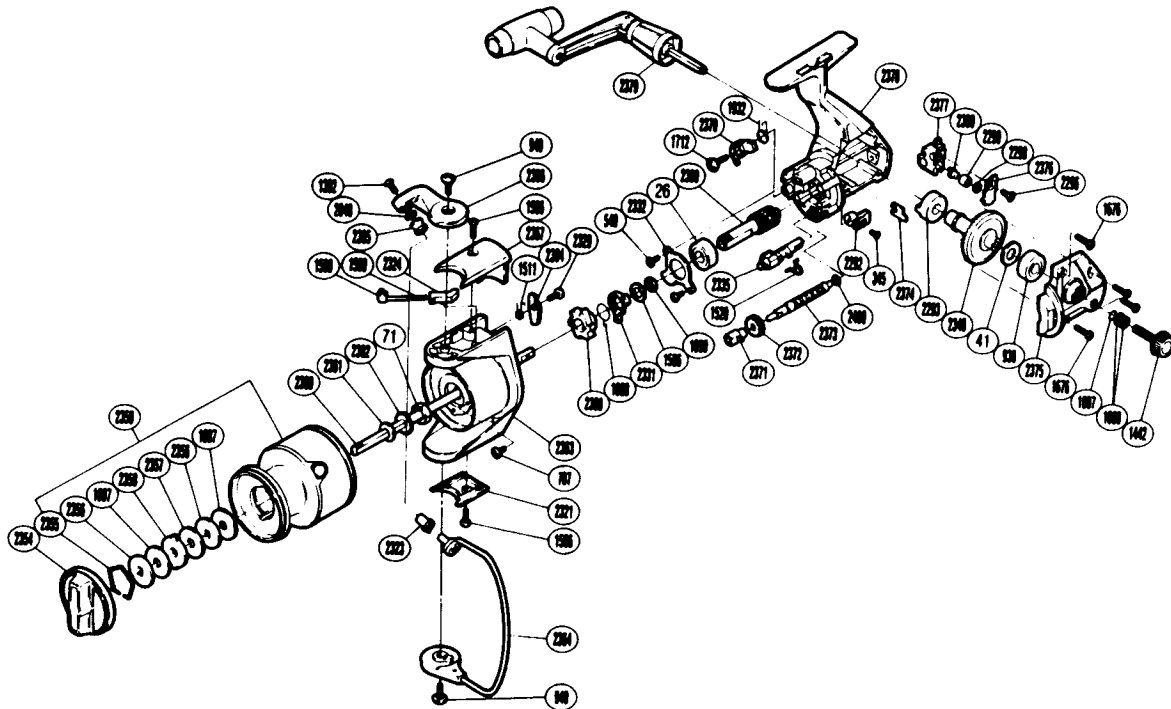
# EXPLODED PARTS VIEW



# SHIMANO®

## 1990 REPAIR MANUAL

Shimano American Corporation, One Shimano Dr.  
Irvine, CA 92718



TO ORDER: USE RD PREFIX  
WITH PART NUMBER

### PARTS LIST

RD #	DESCRIPTION	RD #	DESCRIPTION	RD #	DESCRIPTION
0026	Ball Bearing	1932	Anti-Reverse Pawl Spring	2360	Main Shaft
0041	Drive Gear Washer	2048	Line Roller Washer	2361	Spool Washer
0071	Rotor Nut	2292	Anti-Reverse Lever	2362	Spool Support
0345	Anti-Reverse Lever Screw	2293	Drive Gear Bushing	2363	Rotor
0540	Anti-Reverse Pawl Screw	2296	Slider Retainer Screw	2364	Bail Assembly
0787	Nut Lock Screw	2298	Spacer	2365	Line Roller
0930	Ball Bearing	2299	Oscillating Slider Bushing	2366	Bail Arm
0940	Bail Trip Cam Screw	2300	Oscillating Pawl	2367	Bail Spring Cover
1007	Lock Washer Retainer	2321	Rotor Side Cover	2368	Anti-Reverse Ratchet
1008	Handle Lock Washer	2323	Line Roller Bushing	2369	Pinion Gear
1087	Drag Washer 1	2324	Bail Spring Guide (B)	2370	Anti-Reverse Pawl
1302	Line Roller Screw	2329	Bail Trip Lever Screw	2371	Worm Bearing
1442	Handle Screw Cap	2331	Anti-Reverse Lock Out	2372	Idle Gear
1506	Bail Spring Cover Screw	2332	Bearing Retainer	2373	Worm Shaft
1508	Bail Spring Guide A	2335	Anti-Reverse Cam	2374	Worm Shaft Retainer
1509	Bail Spring	2340	Drive Gear	2375	Side Cover
1511	Lever Spring	2354	Drag Knob	2376	Oscillating Pawl Cover
1520	Anti-Reverse Cam Spring	2355	Drag Washers Retainer	2377	Oscillating Slider
1596	Bushing Washer	2356	Key Washer	2378	Body
1676	Side Cover Screw	2357	Drag Washer 2	2379	Handle Assembly
1712	Anti-Reverse Pawl Screw	2358	Eared Washer	2394	Bail Trip Lever
1888	Anti-Reverse Lock Out Spring	2359	Spool Assembly	2409	Worm Shaft Spacer
1890	Bushing Washer				

Prices and specifications subject to change without notice.

1/1990