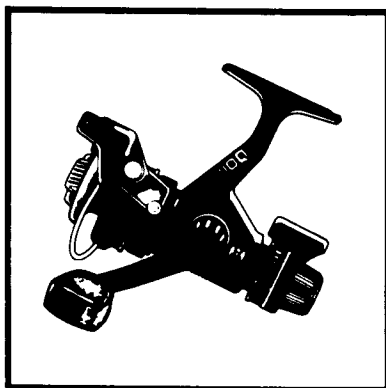


SHIMANO®

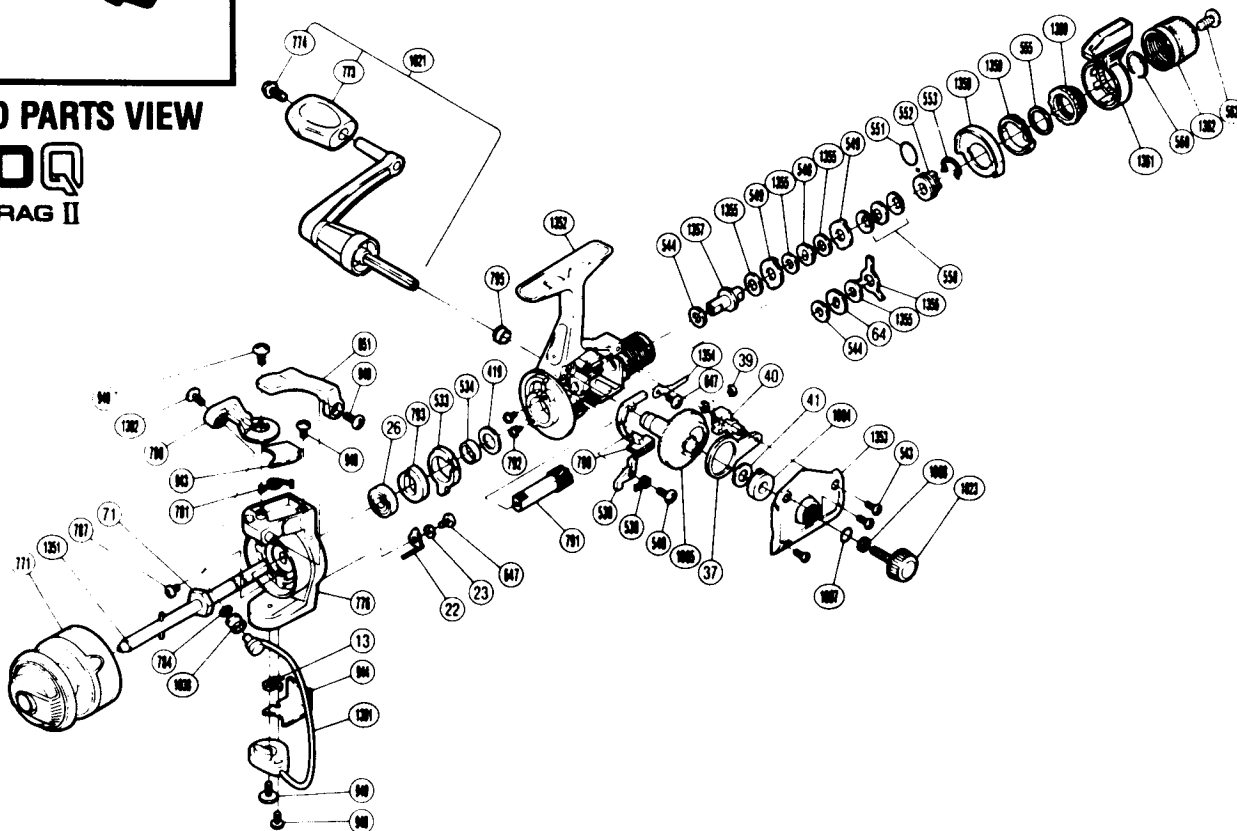
1988 REPAIR MANUAL

Shimano American Corporation, One Shimano Dr.
Irvine, CA 92718



EXPLODED PARTS VIEW

TX110Q
FIGHTIN' DRAG II



PARTS LIST

PART # DESCRIPTION

RD 0013	(Trip) Lever Spring
RD 0022	(Bail) Trip Lever
RD 0023	Trip Lever Spacer
RD 0026	Ball Bearing
RD 0037	Oscillating Arm
RD 0039	"C" Lock
RD 0040	Oscillating Block
RD 0041	Drive Gear Washer
RD 0064	Click Gear
RD 0071	Rotor Nut
RD 0419	Bushing Washer (B)
RD 0533	Anti-Reverse Lock Out
RD 0534	Pinion Spacer
RD 0538	Anti-Reverse Pawl
RD 0539	Anti-Reverse Pawl Spring
RD 0540	Anti-Reverse Pawl Screw
RD 0543	Side Cover Screw (B)
RD 0544	Drag Washer "C2" (White)
RD 0548	Key Washer "A"
RD 0549	Eared Washer "B"
RD 0550	Coned Disc Spring
RD 0551	"O" Ring
RD 0552	Pressure Screw

PART # DESCRIPTION

RD 0553	Hold Click Spring
RD 0555	Fightin' Pressure Screw Washer
RD 0560	Lever Hold Spring
RD 0562	Drag Programmer Screw
RD 0647	Nut Lock Screw
RD 0771	Spool Assembly
RD 0773	Handle Knob
RD 0774	Handle Knob Screw
RD 0776	Rotor
RD 0780	Bail Arm
RD 0781	Bail Spring
RD 0784	Line Roller Washer
RD 0787	Nut Lock Screw
RD 0790	Anti-Reverse Switch (Black)
RD 0791	Pinion Gear
RD 0792	Bearing Retainer Screw
RD 0793	Anti-Reverse Ratchet
RD 0795	Bushing B
RD 0851	Quick-Fire II Trigger
RD 0940	Bail Trip Cam Screw
RD 0943	Bail Spring Cover
RD 0944	Bail Trip Cover

PART # DESCRIPTION

RD 0948	Bail Trip Cover Screw
RD 0949	Trigger Screw
RD 1004	Bushing A
RD 1005	Drive Gear
RD 1007	Lock Washer Retainer
RD 1008	Handle Lock Washer
RD 1021	Handle Assembly
RD 1023	Handle Screw Cap
RD 1038	Sic Ceramic Roller
RD 1301	Bail Assembly
RD 1302	Line Roller Screw
RD 1351	Main Shaft
RD 1352	Body
RD 1353	Side Cover
RD 1354	Drag Click
RD 1355	Drag Washer "C1"
RD 1356	Eared Washer "BF"
RD 1357	Drag Shaft
RD 1358	Lever Quadrant
RD 1359	Lever Click Gear
RD 1360	Fightin' Pressure Screw
RD 1361	Fightin' Drag II Lever
RD 1362	Drag Programmer