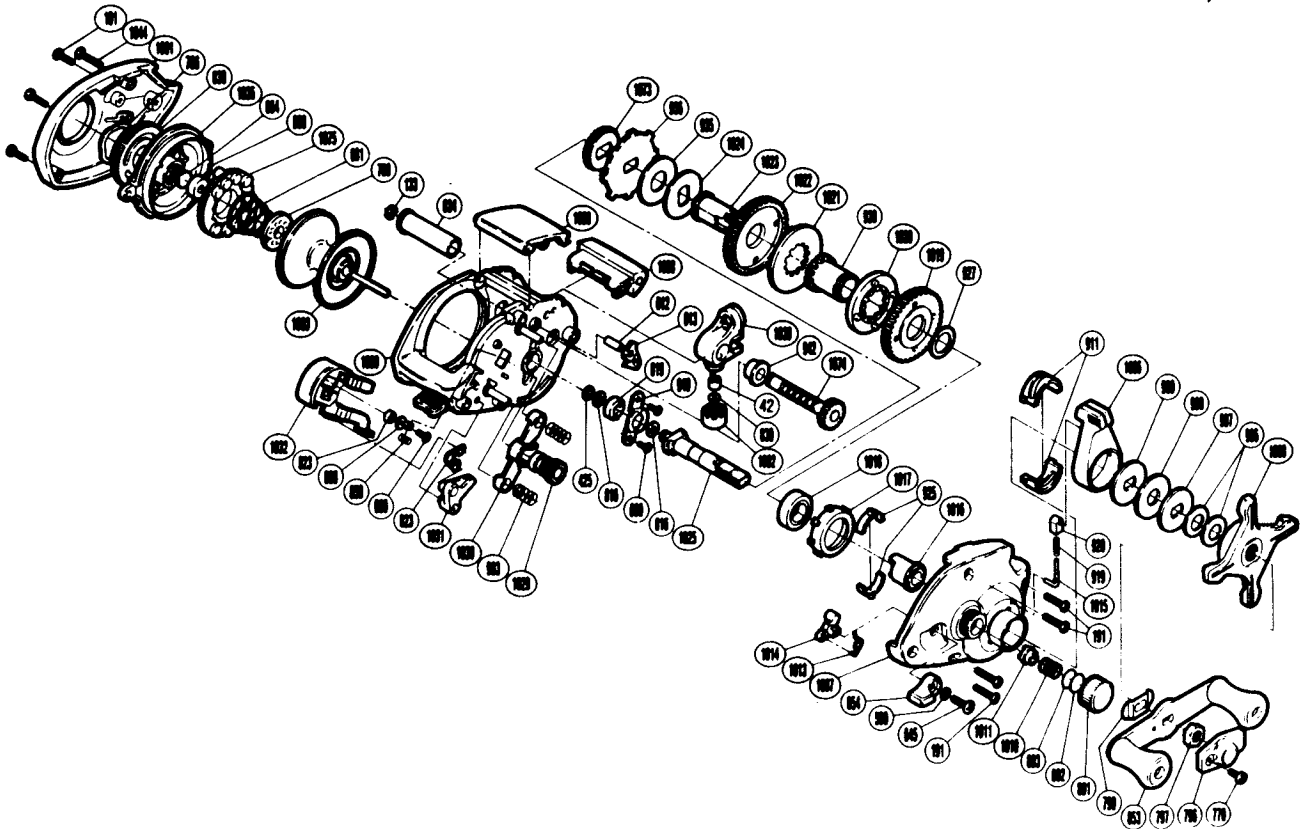


EXPLODED PARTS VIEW
B-Mag 1000II

SHIMANO®

1990 REPAIR MANUAL

Shimano American Corporation, One Shimano Dr.
Irvine, CA 92718



**TO ORDER: USE BNT PREFIX
WITH PART NUMBER**

PARTS LIST

BNT #	DESCRIPTION	BNT #	DESCRIPTION	BNT #	DESCRIPTION
0042	Line Guide Pawl	0834	Level Wind Guard	1013	Cam Spring
0133	Worm Shaft Retainer	0838	Magnetic Control Dial	1014	Flipping Cam
0191	Side Plate Screw	0853	Handle Assembly	1015	Shift Spring Guide (A)
0425	Clutchbutton Lock	0854	Flipping Lever	1016	Drag Shaft (B)
0590	Lock Washer	0859	Flipping Retractor Spring	1017	Bearing Holder
0609	Drive Shaft Retainer Screw	0860	Yoke Plate Washer (B)	1018	Drive Shaft Bearing (B)
0612	Anti-Reverse Pawl Pin	0880	Spool Shaft Bushing (C)	1019	Drive Gear (L)
0613	Anti-Reverse Pawl	0906	Coned Disc Spring	1020	Shift Clutch (L)
0645	Flipping Lever Screw	0907	Key Washer (A)	1021	Shift Clutch (H)
0661	Magnet Retainer Spring	0908	Drag Washer (D)	1022	Drive Gear (H)
0664	Spacer (B)	0909	Key Washer (C)	1023	Drag Shaft (A)
0766	Dial Friction Washer	0911	Shift Cam	1024	Drive Shaft Washer
0770	Handle Nut Plate Screw	0919	Shift Spring	1025	Drive Shaft
0780	Magnet Retainer Lock	0920	Shift Spring Guide (B)	1029	Pinion Gear
0796	Handle Nut Plate	0925	Shift Arm	1030	Yoke
0797	Handle Nut	0927	Drive Gear Washer	1031	Joint Plate
0799	Friction Washer	0930	Shift Sleeve	1032	Clutch Button
0801	Cast Control Cap	0935	Drag Washer (A)	1035	Dial Case
0802	Spool Tension Spacer (B)	0936	Anti-Reverse Ratchet	1039	Line Guide
0803	Spool Tension Spacer (A)	0940	Drive Shaft Retainer	1044	Left Side Plate Screw
0816	Drive Shaft Washer	0942	Worm Bearing	1073	Idle Gear
0819	Drive Shaft Bushing	0993	Yoke Spring	1074	Worm Shaft
0823	Retractor Spring	1008	Star Drag	1075	Magnet Retainer
0825	Yoke Plate Washer (A)	1010	Spool Tension Spring	1092	Pawl Cap
0830	Spacer (Optional)	1011	Spool Shaft Bushing (A)	1093	Spool

Prices and specifications subject to change without notice.

1/1990