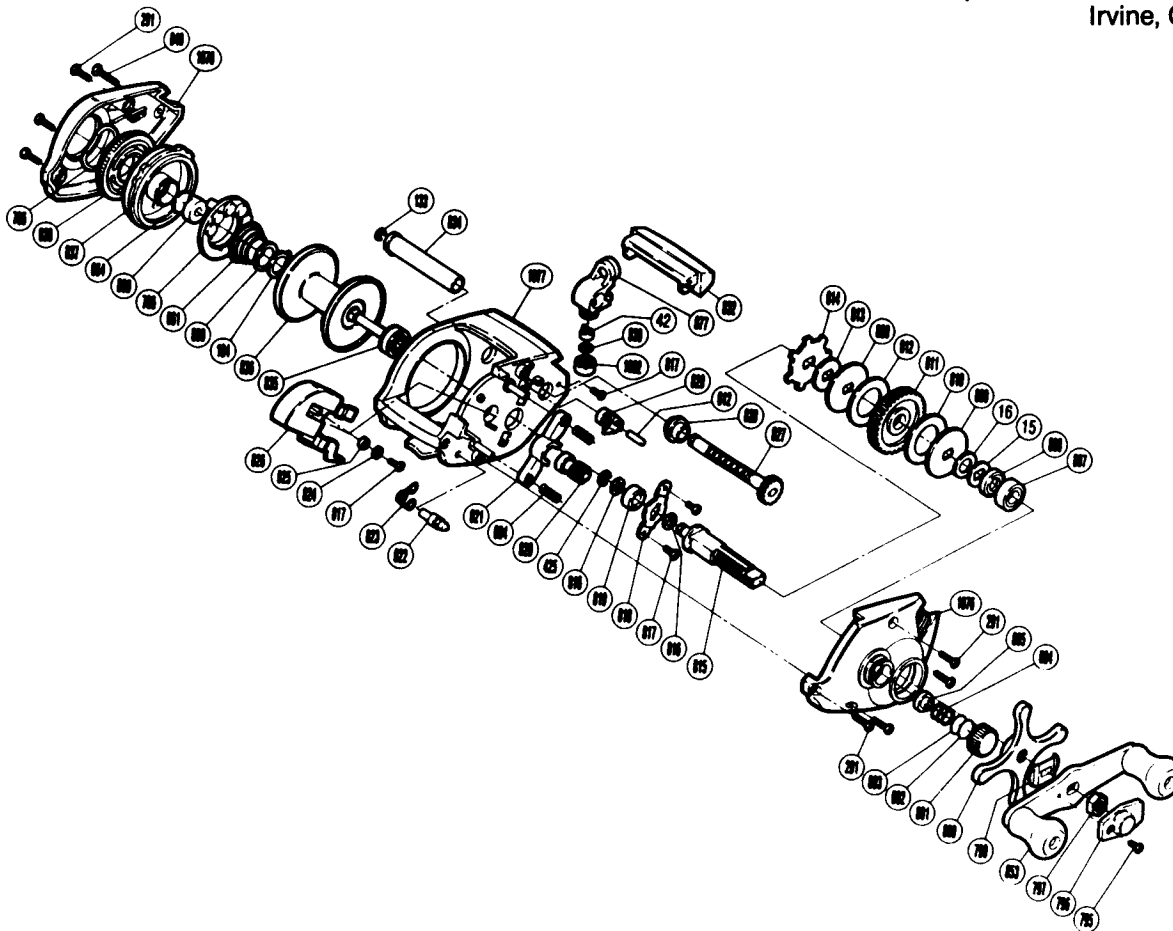


**EXPLODED PARTS VIEW  
B-110**

**SHIMANO®**

**1990 REPAIR MANUAL**

Shimano American Corporation, One Shimano Dr.  
Irvine, CA 92718



**TO ORDER: USE BNT PREFIX  
WITH PART NUMBER**

**PARTS LIST**

BNT #	DESCRIPTION	BNT #	DESCRIPTION	BNT #	DESCRIPTION
0015	Drag Spring Washer	0802	Spool Tension Spacer [B]	0823	Retractor Spring
0016	Friction Washer [C]	0803	Spool Tension Spacer [A]	0824	Yoke Plate Washer [B]
0042	Line Guide Pawl	0804	Spool Tension Spring	0825	Yoke Plate Washer [A]
0133	Worm Shaft Retainer	0805	Spool Shaft Bushing [A]	0826	Clutch Button
0184	Magnet Retainer Lock	0807	Drive Shaft Bearing	0827	Worm Shaft
0291	Side Plate Screw	0808	Friction Washer [B]	0828	Worm Bearing
0425	Clutchbutton Lock	0809	Key Washer [A]	0829	Anti-Reverse Pawl
0604	Yoke Spring	0810	Drag Washer [A]	0830	Spacer [Optional]
0612	Anti-Reverse Pawl Pin	0811	Drive Gear	0832	Level Wind Protector
0660	Spring Spacer	0812	Drag Washer [B]	0834	Level Wind Guard
0661	Magnet Retainer Spring	0813	Key Washer [B]	0835	Spool Shaft Bushing [B]
0664	Spacer [B]	0814	Anti-Reverse Ratchet	0836	Spool
0706	Magnet Retainer	0815	Drive Shaft	0837	Dial Case
0766	Dial Friction Washer	0816	Drive Shaft Washer	0838	Magnetic Control Dial
0795	Handle Nut Plate Screw	0817	Multi Purpose Screw	0840	Left Side Plate Screw
0796	Handle Nut Plate	0818	Drive Shaft Retainer	0853	Handle Assembly
0797	Handle Nut	0819	Drive Shaft Bushing	0877	Line Guide
0799	Friction Washer	0820	Pinion Gear	0880	Spool Shaft Bushing [C]
0800	Star Drag	0821	Yoke	1092	Pawl Cap
0801	Cast Control Cap	0822	Retractor Spring Pin		

Prices and specifications subject to change without notice.