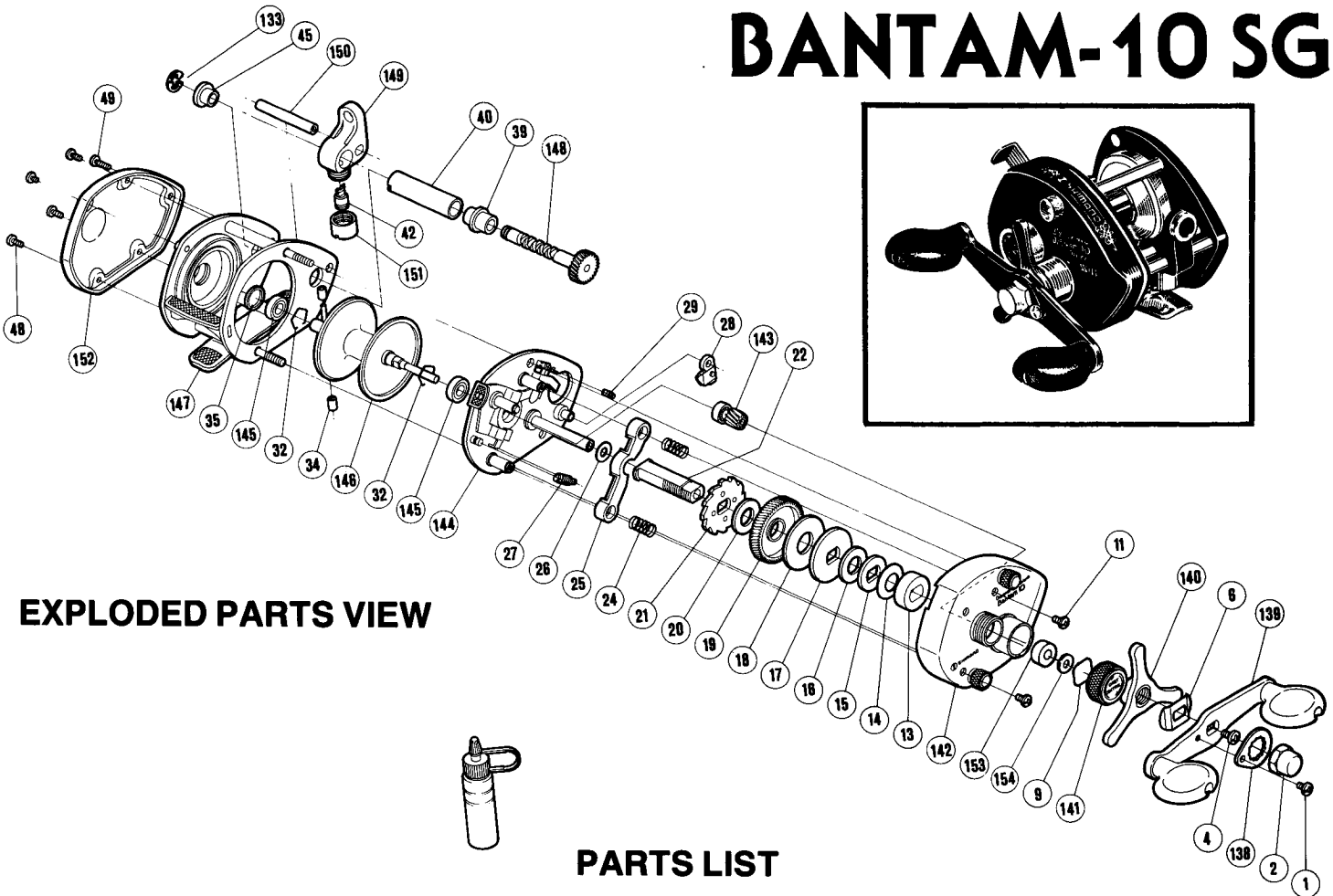


# BANTAM-10 SG



**EXPLODED PARTS VIEW**

## PARTS LIST

PART #	DESCRIPTION	PRICE	PART #	DESCRIPTION	PRICE	PART #	DESCRIPTION	PRICE
1.	Handle Nut Lock Screw	.15	26.	Drive Shaft Shim	.15	133.	Level Wind Gear Lock	.15
2.	Handle Nut	.65	27.	Retractor Spring #1	.60	138.	Handle Nut Lock Plate	.30
4.	Drive Shaft Retainer Screw	.15	28.	Anti-Reverse Dog	1.00	139.	Handle	6.00
6.	Friction Washer	.20	29.	Retractor Spring #2	.35	140.	Drag Tri Star	2.15
9.	Cast Control Spacer	.15	32.	Bearing Lock	.15	141.	Cast Control Cap	.95
11.	Right Sideplate Screw	.15	34.	Centrifugal Brake Weight	.15	142.	Right Sideplate	8.50
13.	Drive Shaft Bearing	.15	35.	Left Bearing Spacer	.40	143.	Pinion Gear	4.00
14.	Drag Spring Washer	.15	39.	Level Wind Bearing Right	.20	144.	Set Plate	12.00
15.	"D" Washer	.20	40.	Level Wind Guard	2.15	145.	Spool Shaft Bushing	.50
16.	Drag Spacer	.40	42.	Level Wind Pawl	1.00	146.	Spool	9.00
17.	Pressure Plate	.15	45.	Level Wind Bearing Left	.20	147.	Frame	14.00
18.	Drag Washer	.25	48.	Left Side Plate Screw	.20	148.	Level Wind Gear	3.50
19.	Drive Gear	3.50	49.	Left Stabilizer Bar Screw	.15	149.	Line Guide	2.00
20.	Base Drag Washer	.25	60.	Line Guide Pawl Spacer (optional)	.15	150.	Stabilizer Bar	.75
21.	Anti-Reverse Ratchet	1.80				151.	Pawl Cap	.50
22.	Drive Shaft	4.60				152.	Left Sideplate	1.50
24.	Pinion Yoke Spring	.15				153.	Cast Control Bushing	.50
25.	Pinion Yoke	.25				154.	Felt Oil Retainer	.15

Prices and specifications subject to change without notice.