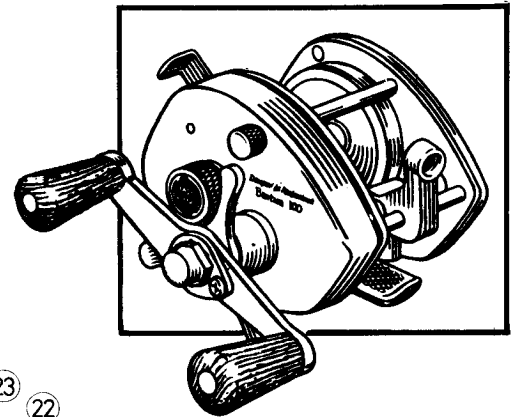


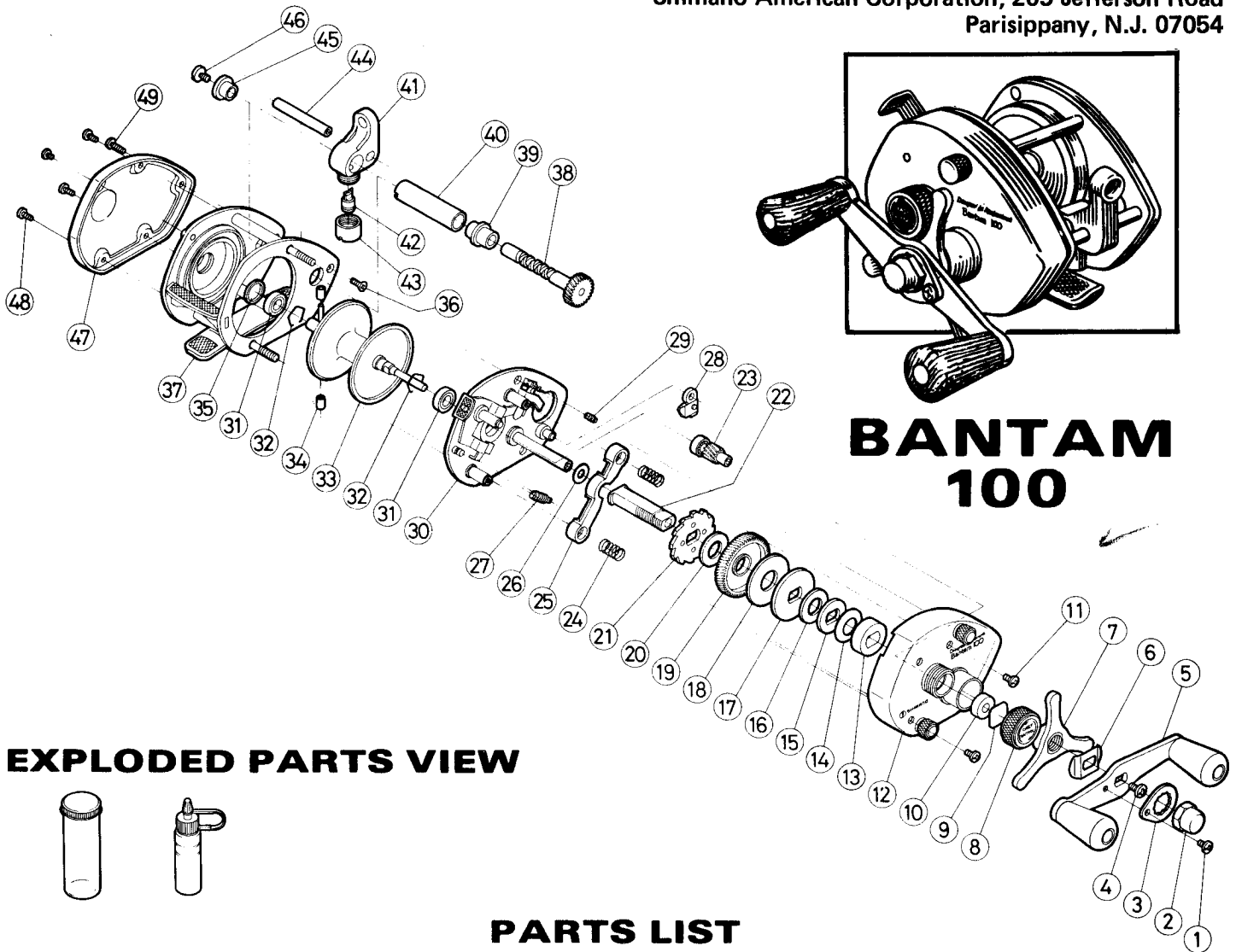
# SHIMANO

## REPAIR MANUAL

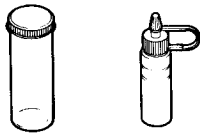
Shimano American Corporation, 205 Jefferson Road  
Parisippany, N.J. 07054



## BANTAM 100



### EXPLODED PARTS VIEW



### PARTS LIST

PART #	DESCRIPTION	PRICE	PART #	DESCRIPTION	PRICE	PART #	DESCRIPTION	PRICE
1	Handle Nut Lock Screw	.15	18	Drag Washer	.25	34	Centrifugal Brake Weights	.15
2	Handle Nut	.65	19	Drive Gear	3.50	35	Left Bearing Spacer	.40
3	Handle Nut Lock Plate	.30	20	Base Drag Washer	.25	36	Right Stabilizer Bar Screw	.15
4	Drive Shaft Retainer Screw	.15	21	Antireverse Ratchet	1.80	37	Frame Assembly	20.00
5	Handle	6.30	22	Drive Shaft	4.60	38	Level Wind Gear	3.50
6	Friction Washer	.20	23	Pinion Gear	6.70	39	Level Wind Bearing (Right)	.20
7	Drag Tri-Star	2.15	24	Pinion Yoke Spring	.15	40	Level Wind Guard	2.15
8	Cast Control Cap	.95	25	Pinion Yoke	.25	41	Line Guide	2.50
9	Cast Control Spacer	.15	26	Drive Shaft Shim	.15	42	Level Wind Pawl	1.00
10	Cast Control Bushing	.15	27	Retractor Spring #1	.60	43	Pawl Cap	.50
11	Right Sideplate Screw	.15	28	Anti Reverse Dog	1.00	44	Line Guide Stabilizer Bar	1.20
12	Right Sideplate	10.60	29	Retractor Spring #2	.35	45	Level Wind Bearing (Left)	.20
13	Drive Shaft Bearing	.15	30	Set Plate	16.00	46	Level Wind Retainer Screw	.15
14	Drag Spring Washer	.15	31	Spool Shaft Bearing	6.50	47	Left Side Plate	1.80
15	"D" Washer	.20	32	Bearing Lock	.15	48	Left Side Plate Screw	.20
16	Drag Spacer	.40	33	Spool	13.00	49	Left Stabilizer Bar Screw	.15
17	Pressure Plate	.15				60	Line Guide Pawl Spacer*	.15

Prices and specifications subject to change without notice.

\*Optional - not shown in exploded view.