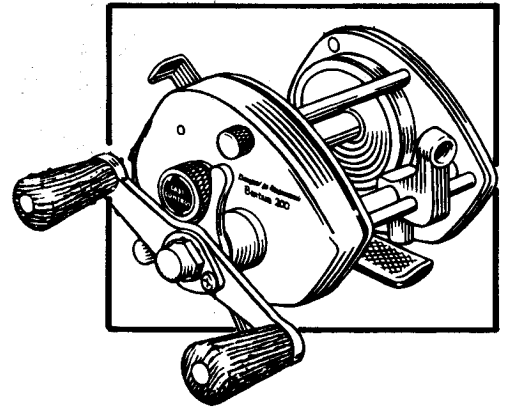


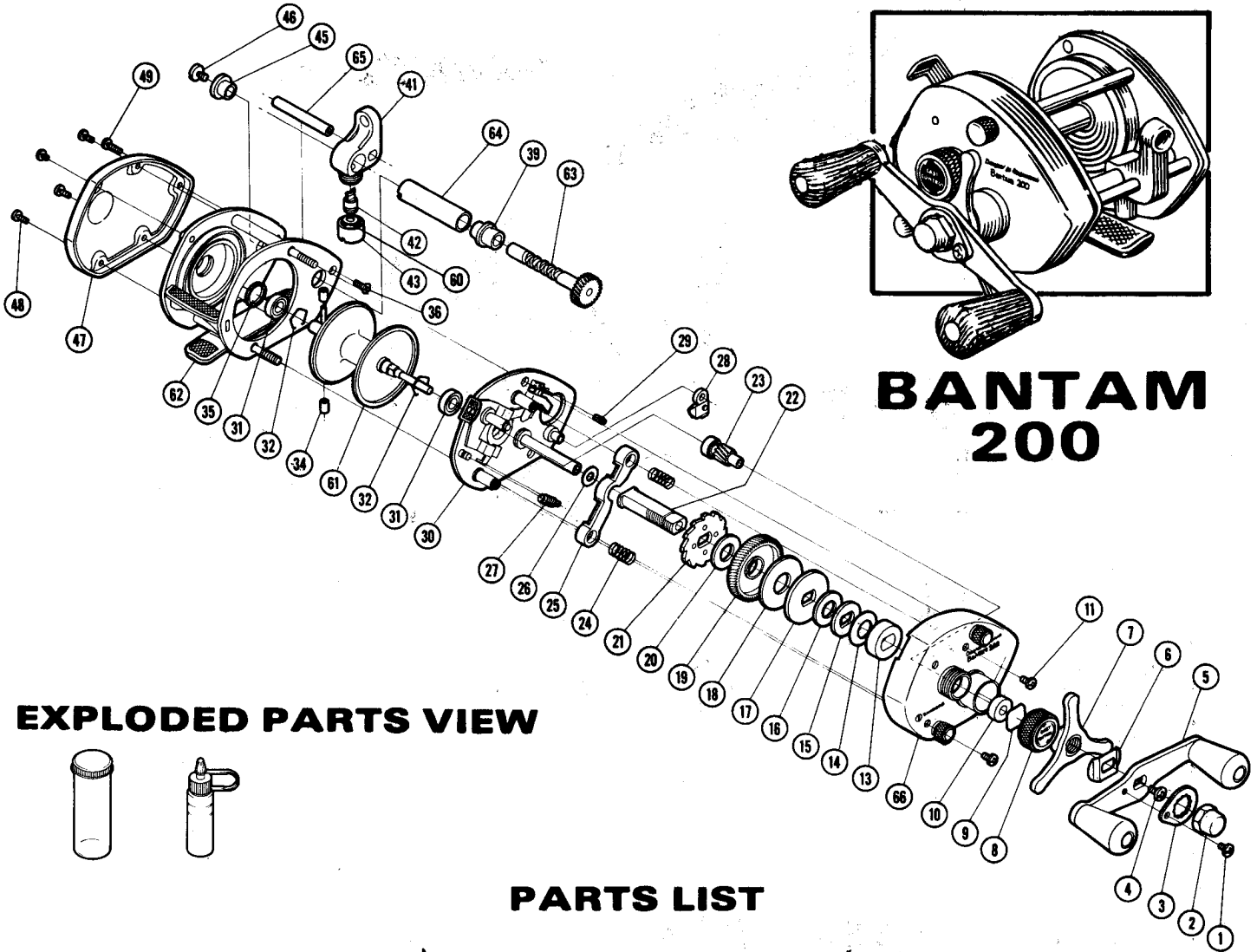
SHIMANO

REPAIR MANUAL

Shimano American Corporation, 205 Jefferson Road
Parisippany, N.J. 07054



BANTAM 200



EXPLODED PARTS VIEW

PARTS LIST

PART #	DESCRIPTION	PRICE	PART #	DESCRIPTION	PRICE	PART #	DESCRIPTION	PRICE
1	Handle Nut Lock Screw	.15	19	Drive Gear	3.50	36	Right Stabilizer Bar Screw	.15
2	Handle Nut	.65	20	Base Drag Washer	.25	39	Level Wind Bearing (Right)	.20
3	Handle Nut Lock Plate	.30	21	Antireverse Ratchet	1.80	41	Line Guide	2.50
4	Drive Shaft Retainer Screw	.15	22	Drive Shaft	4.60	42	Level Wind Pawl	1.00
5	Handle	6.30	23	Pinion Gear	6.70	43	Pawl Cap	.50
6	Friction Washer	.20	24	Pinion Yoke Spring	.15	45	Level Wind Bearing (Left)	.20
7	Drag Tri-Star	2.15	25	Pinion Yoke	.25	46	Level Wind Retainer Screw	.15
8	Cast Control Cap	.95	26	Drive Shaft Shim	.15	47	Left Side Plate	1.80
9	Cast Control Spacer	.15	27	Retractor Spring #1	.60	48	Left Side Plate Screw	.20
10	Cast Control Bushing	.15	28	Anti Reverse Dog	1.00	49	Left Stabilizer Bar Screw	.15
11	Right Sideplate Screw	.15	29	Retractor Spring #2	.35	60	Line Guide Pawl Spacer	.15
13	Drive Shaft Bearing	.15	30	Set Plate	16.00	61	Spool	15.00
14	Drag Spring Washer	.15	31	Spool Shaft Bearing	6.50	62	Frame Assembly	21.00
15	"D" Washer	.20	32	Bearing Lock	.15	63	Level Wind Gear	3.75
16	Drag Spacer	.40	34	Centrifugal Brake Weights	.15	64	Level Wind Guard	1.30
17	Pressure Plate	.15	35	Left Bearing Spacer	.40	65	Line Guide Stabilizer Bar	1.35
18	Drag Washer	.25				66	Right Side Plate	10.50

Prices and specifications subject to change without notice.

*Optional - not shown in exploded view.