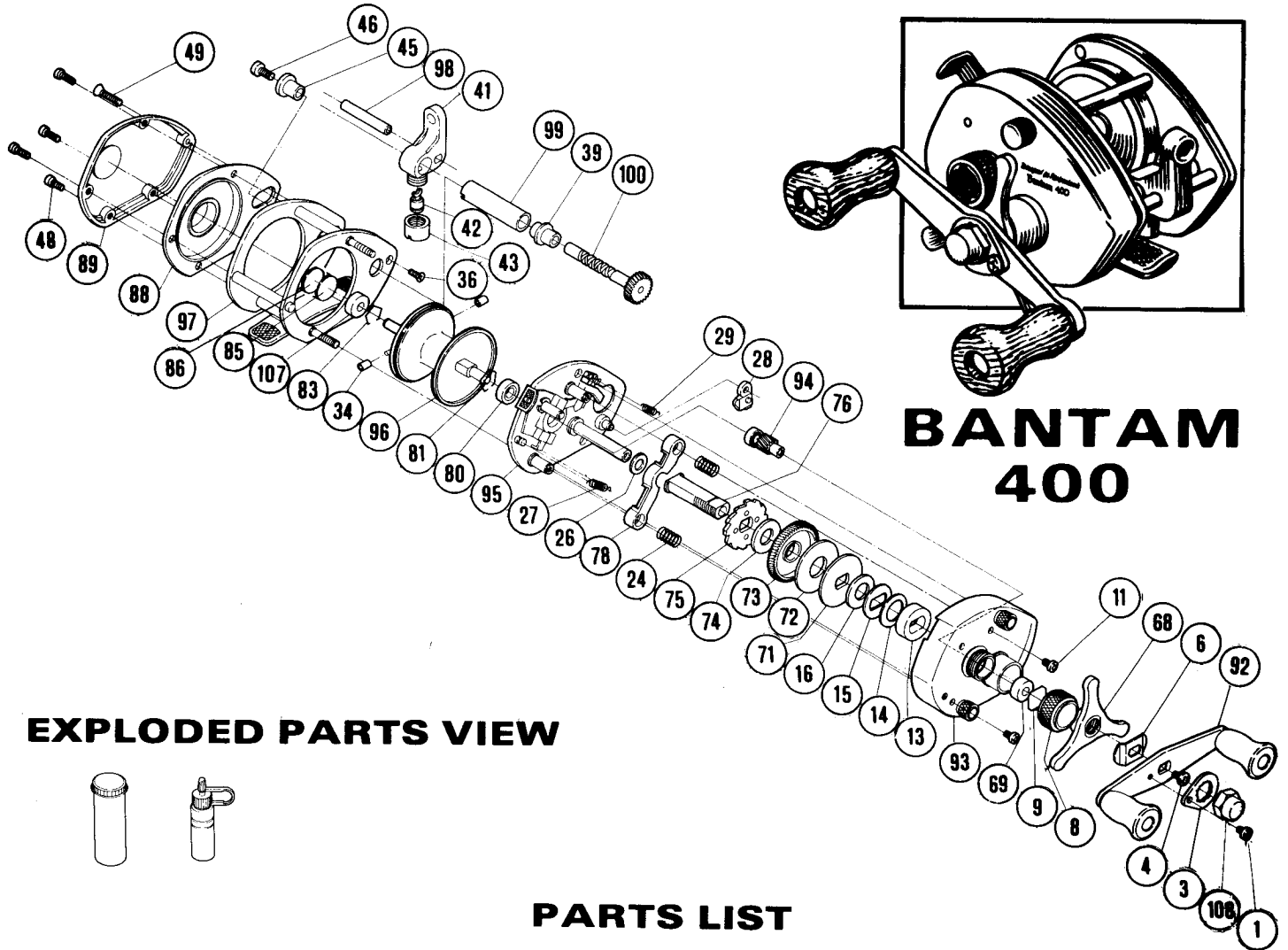




SHIMANO

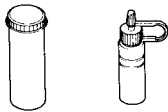
REPAIR MANUAL

Shimano American Corporation, 205 Jefferson Road
Parisippany, N.J. 07054



BANTAM 400

EXPLODED PARTS VIEW



PARTS LIST

PART #	DESCRIPTION	PRICE	PART #	DESCRIPTION	PRICE	PART #	DESCRIPTION	PRICE
1	Handle Nut Lock Screw	.15	41	Line Guide	2.50	78	Pinion Yoke	.25
3	Handle Nut Lock Plate	.30	42	Level Wind Pawl	1.00	80	Right Spool Bearing	6.50
4	Drive Shaft Retainer Screw	.15	43	Pawl Cap	.50	81	Right Bearing Lock	.15
6	Friction Washer	.20	45	Level Wind Bearing (Left)	.20	83	Left Bearing Lock	.15
8	Cast Control Cap	.95	46	Level Wind Retainer Screw	.15	85	Left Bearing Spacer	.15
9	Cast Control Spacer	.15	48	Left Side Plate Screw	.20	86	Left Bearing Shim	.15
11	Right Sideplate Screw	.15	49	Left Stabilizer Bar Screw	.15	88	Left Bearing Plate	6.40
13	Drive Shaft Bearing	.15	60	Line Guide Pawl Spacer*	.15	89	Left Side Plate	2.00
14	Drag Spring Washer	.15	68	Drag Tri-Star	2.35	92	Handle	6.50
15	"D" Washer	.20	69	Spool Shaft Bushing	.25	93	Right Side Plate	12.50
16	Drag Spacer	.40	71	Pressure Plate	.35	94	Pinion Gear	5.00
24	Pinion Yoke Spring	.15	72	Drag Washer	.15	95	Set Plate	14.75
26	Drive Shaft Shim	.15	73	Drive Gear	3.50	96	Spool	19.00
27	Retractor Spring #1	.60	74	Base Drag Washer	.25	97	Frame	16.50
28	Anti Reverse Dog	1.00	75	Anti Reverse Ratchet	1.90	98	Stabilizer Bar	1.50
29	Retractor Spring #2	.35	76	Drive Shaft	5.65	99	Level Wind Guard	2.50
34	Centrifugal Brake Weights	.15				100	Level Wind Gear	3.65
36	Right Stabilizer Bar Screw	.15				107	Left Spool Bearing	1.20
39	Level Wind Bearing (Right)	.20				108	Handle Nut	.75

Prices and specifications subject to change without notice.

*Optional - not shown in exploded view.