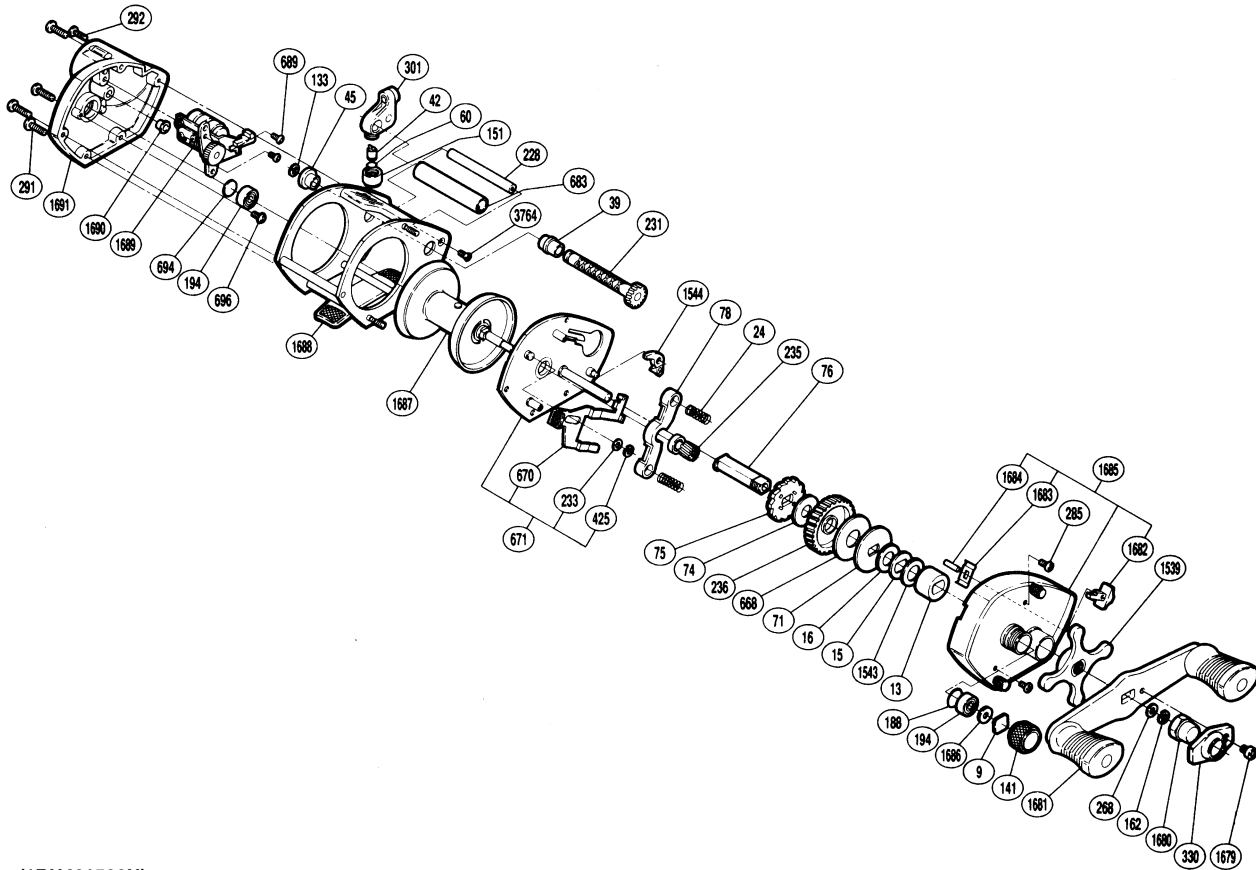


SHIMANO

Bantam

B-1500LC



(1RH461500U)

Part No.	Description	Part No.	Description	Part No.	Description
BNT0009	Spacer	BNT0194	Ball Bearing	BNT0696	Bearing Retainer Screw
BNT0013	Bushing	BNT0228	Stabilizer Bar	BNT1539	Star Drag
BNT0015	Drag Spring Washer	BNT0231	Worm Shaft	BNT1543	Friction Washer (B)
BNT0016	Friction Washer (C)	BNT0233	Clutch Lever Spacer	BNT1544	Anti-Reverse Pawl
BNT0024	Yoke Spring	BNT0235	Pinion Gear	BNT1679	Handle Nut Plate Screw
BNT0039	Worm Bushing (A)	BNT0236	Drive Gear	BNT1680	Handle Nut
BNT0042	Line Guide Pawl	BNT0268	Drive Shaft Washer	BNT1681	Handle Assembly
BNT0045	Worm Bushing (B)	BNT0285	Set Plate Screw	BNT1682	Anti-Reverse Switch
BNT0060	Spacer (optional)	BNT0291	Left Side Plate Screw (short)	BNT1683	Switch Spring
BNT0071	Pressure Plate	BNT0292	Left Side Plate Screw (long)	BNT1684	Switch Spring Pin
BNT0074	Base Drag Washer	BNT0301	Line Guide	BNT1685	Right Side Plate Assembly
BNT0075	Anti-Reverse Ratchet	BNT0330	Handle Nut Plate	BNT1686	Felt Washer
BNT0076	Drive Shaft	BNT0425	Clutch Plate Lock	BNT1687	Spool Assembly
BNT0078	Pinion Yoke	BNT0668	Drag Washer	BNT1688	Frame Assembly
BNT0133	Worm Shaft Retainer	BNT0670	Clutch Plate	BNT1689	Counter Assembly
BNT0141	Cast Control Cap	BNT0671	Set Plate Assembly	BNT1690	Worm Bushing (small)
BNT0151	Pawl Cap	BNT0683	Level Wind Guard	BNT1691	Left Side Plate
BNT0162	Drive Shaft Retainer	BNT0689	Counter Screw	BNT3764	Screw
BNT0188	O Ring	BNT0694	Spacer "B"		

(180928)