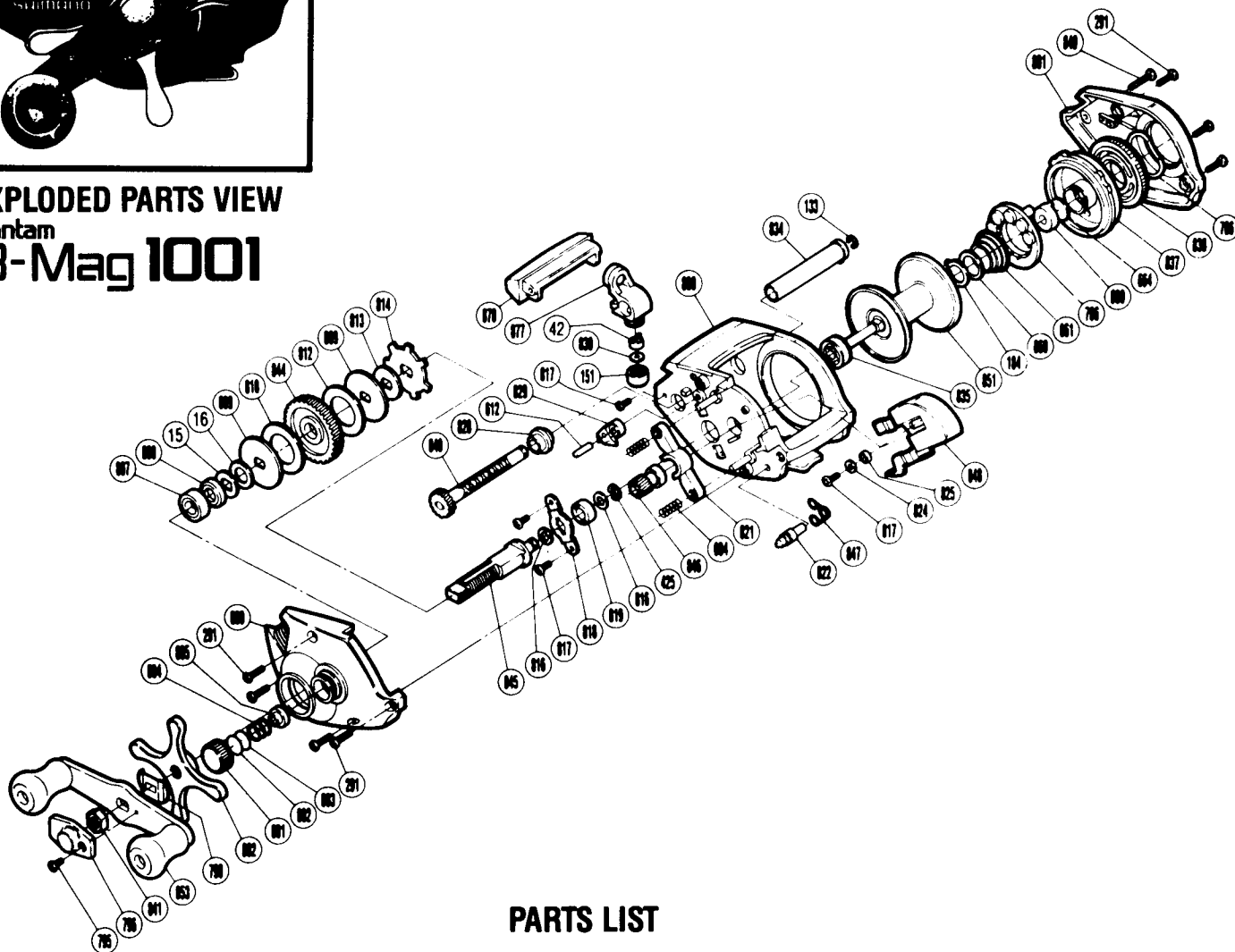


EXPLODED PARTS VIEW
Bantam
B-Mag 1001

**PARTS LIST****PART # DESCRIPTION**

| | |
|----------|--------------------------|
| BNT 0015 | Drag Spring Washer |
| BNT 0016 | Friction Washer (C) |
| BNT 0042 | Line Guide Pawl |
| BNT 0133 | Worm Shaft Retainer |
| BNT 0151 | Pawl Cap |
| BNT 0184 | Magnet Retainer Lock |
| BNT 0291 | Side Plate Screw |
| BNT 0425 | Clutchbutton Lock |
| BNT 0604 | Yoke Spring |
| BNT 0612 | Anti-Reverse Pawl Pin |
| BNT 0660 | Spring Spacer |
| BNT 0661 | Magnet Retainer Spring |
| BNT 0664 | Spacer (B) |
| BNT 0706 | Magnet Retainer |
| BNT 0766 | Dial Friction Washer |
| BNT 0795 | Handle Nut Plate Screw |
| BNT 0796 | Handle Nut Plate |
| BNT 0799 | Friction Washer |
| BNT 0801 | Cast Control Cap |
| BNT 0802 | Spool Tension Spacer (B) |
| BNT 0803 | Spool Tension Spacer (A) |

PART # DESCRIPTION

| | |
|----------|-------------------------|
| BNT 0804 | Spool Tension Spring |
| BNT 0805 | Spool Shaft Bushing (A) |
| BNT 0807 | Drive Shaft Bearing |
| BNT 0808 | Friction Washer (B) |
| BNT 0809 | Key Washer (A) |
| BNT 0810 | Drag Washer (A) |
| BNT 0812 | Drag Washer (B) |
| BNT 0813 | Key Washer (B) |
| BNT 0814 | Anti-Reverse Ratchet |
| BNT 0816 | Drive Shaft Washer |
| BNT 0817 | Multi Purpose Screw |
| BNT 0818 | Drive Shaft Retainer |
| BNT 0819 | Drive Shaft Bushing |
| BNT 0821 | Yoke |
| BNT 0822 | Retractor Spring Pin |
| BNT 0824 | Yoke Plate Washer (B) |
| BNT 0825 | Yoke Plate Washer (A) |
| BNT 0828 | Worm Bearing |
| BNT 0829 | Anti-Reverse Pawl |
| BNT 0830 | Spacer (Optional) |
| BNT 0834 | Level Wind Guard |

PART # DESCRIPTION

| | |
|----------|-------------------------|
| BNT 0835 | Spool Guard Bushing (B) |
| BNT 0837 | Dial Case |
| BNT 0838 | Magnetic Control Dial |
| BNT 0840 | Left Side Plate Screw |
| BNT 0841 | Handle Nut |
| BNT 0844 | Drive Gear |
| BNT 0845 | Drive Shaft |
| BNT 0846 | Pinion Gear |
| BNT 0847 | Retractor Spring |
| BNT 0848 | Clutch Button |
| BNT 0849 | Worm Shaft |
| BNT 0851 | Spool |
| BNT 0853 | Handle Assembly |
| BNT 0877 | Line Guide |
| BNT 0878 | Level Wind Protector |
| BNT 0880 | Spool Shaft Bushing (C) |
| BNT 0882 | Star Drag |
| BNT 0889 | Left Side Plate |
| BNT 0890 | One-Piece Frame |
| BNT 0891 | Right Side Plate |