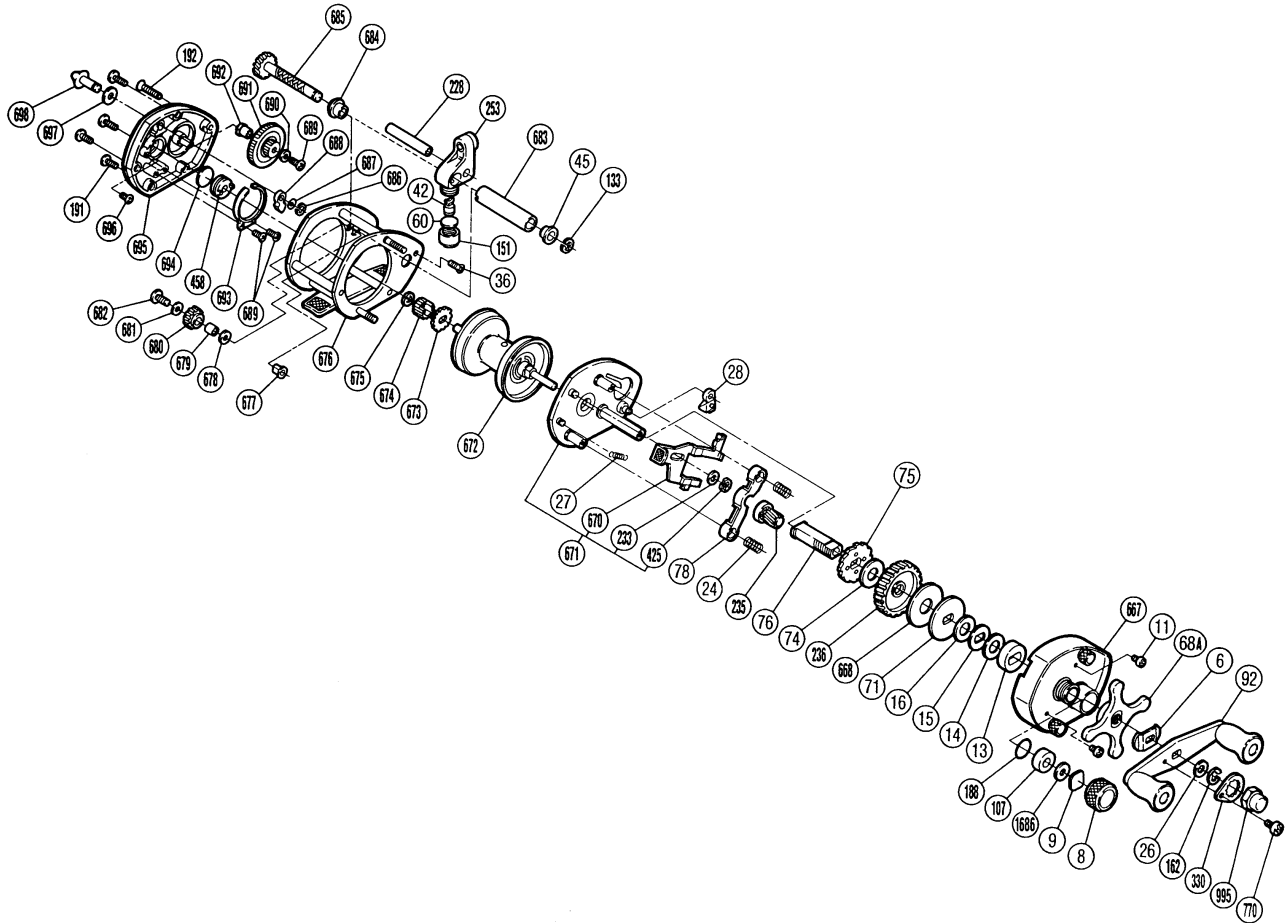


SHIMANO®

Designed for Professionals
Bantam

BM-50



Part No.	Description	Part No.	Description	Part No.	Description
BNT0006	Friction Washer (A)	BNT0133	Worm Shaft Retainer	BNT0678	Idle Gear "D" Spacer
BNT0008	Cast Control Cap	BNT0151	Pawl Cap	BNT0679	Idle Gear "D" Bushing
BNT0009	Cast Control Spacer	BNT0162	Drive Shaft Retainer	BNT0680	Idle Gear "D"
BNT0011	Right Side Plate Screw	BNT0188	"O" Ring	BNT0681	Idle Gear "D" Washer
BNT0013	Bushing (A)	BNT0191	Left Side Plate Screw	BNT0682	Idle Gear "D" Screw
BNT0014	Friction Washer (B)	BNT0192	Stabilizer Bar Screw (B)	BNT0683	Level Wind Guard
BNT0015	Drag Spring Washer	BNT0228	Stabilizer Bar	BNT0684	Worm Bushing (B)
BNT0016	Friction Washer (C)	BNT0233	Clutch Lever Spacer	BNT0685	Worm Shaft
BNT0024	Yoke Spring	BNT0235	Pinion Gear	BNT0686	Click Pawl Retainer
BNT0026	Drive Shaft Washer (A)	BNT0236	Drive Gear	BNT0687	Click Pawl Spacer
BNT0027	Retractor Spring	BNT0253	Line Guide	BNT0688	Click Pawl
BNT0028	Anti-Reverse Pawl	BNT0330	Handle Nut Plate	BNT0689	Multi-Purpose Screw
BNT0036	Stabilizer Bar Screw (A)	BNT0425	Clutch Button Lock	BNT0690	Lock Washer
BNT0042	Line Guide Pawl	BNT0458	Bushing (B)	BNT0691	Idle Gear "B"
BNT0045	Worm Bushing (B)	BNT0667	Right Side Plate	BNT0692	Idle Gear "B" Bushing
BNT0060	Spacer (optional)	BNT0668	Drag Washer	BNT0693	Click Spring
BNT0068A	Star Drag	BNT0670	Clutch Button	BNT0694	Spacer "B"
BNT0071	Pressure Plate	BNT0671	Set Plate Assembly	BNT0695	Left Side Plate
BNT0074	Base Drag Washer	BNT0672	Spool	BNT0696	Bushing Retainer Screw
BNT0075	Anti-Reverse Ratchet	BNT0673	Click Gear	BNT0697	Click Button Spacer
BNT0076	Drive Shaft	BNT0674	Idle Gear "A"	BNT0698	Click Button
BNT0078	Yoke	BNT0675	Idle Gear "A" Retainer	BNT0770	Handle Nut Plate Screw
BNT0092	Handle Assembly	BNT0676	Frame	BNT0995	Handle Nut
BNT0107	Spool Shaft Bushing	BNT0677	Idle Gear "D" Shaft	BNT1686	Felt Washer