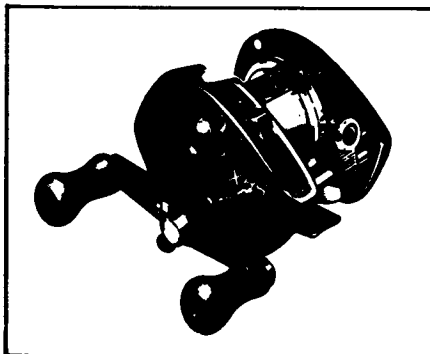
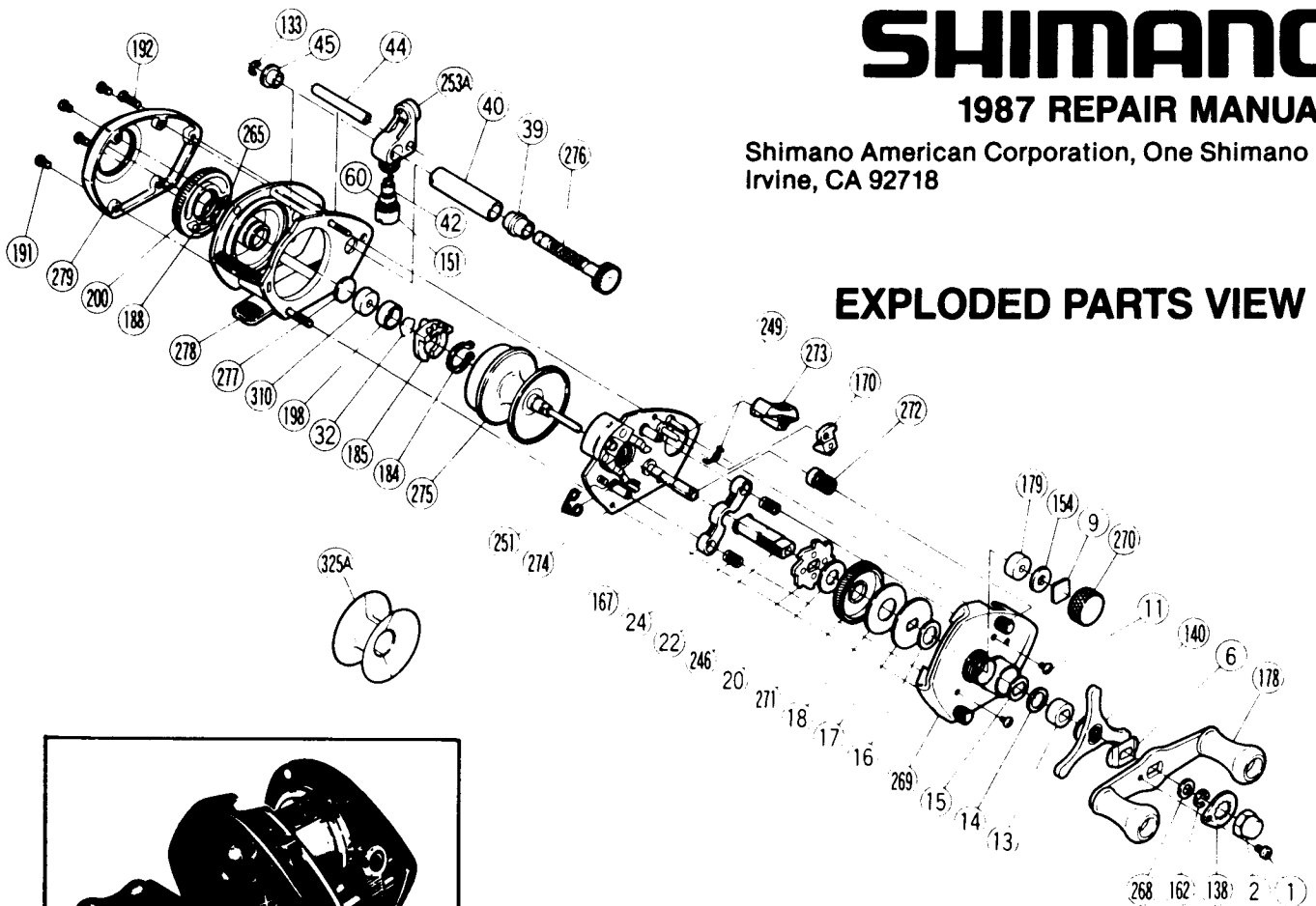


# SHIMANO®

## 1987 REPAIR MANUAL

Shimano American Corporation, One Shimano Dr.  
Irvine, CA 92718



**TO ORDER:**  
This reel belongs to the "Bantam" series.  
Please order parts using the abbreviation  
"BNT" and the part number.

# BANTAM® MAG PLUS-15 SG

## PARTS LIST

### PART# DESCRIPTION

- 1. Handle Nut Lock Screw
- 2. Handle Nut
- 6. Friction Washer
- 9. Cast Control Spacer
- 11. Right Side Plate Screw
- 13. Drive Shaft Bearing
- 14. Drag Spring Washer
- 15. "D" Washer
- 16. Drag Spacer
- 17. Pressure Plate
- 18. Drag Washer
- 20. Base Drag Washer
- 22. Drive Shaft
- 24. Pinion Yoke Spring
- 32. Bearing Lock
- 39. Level Wind Bearing Right
- 40. Level Wind Guard
- 42. Level Wind Pawl
- 44. Stabilizer Bar

### PART# DESCRIPTION

- 45. Level Wind Bearing Left
- 60. Pawl Shim (optional)
- 133. Level Wind Gear Lock
- 138. Handle Nut Lock Plate
- 140. Drag Tri-Star
- 151. Pawl Cap
- 154. Felt Oil Retainer
- 162. "C" Lock
- 167. Pinion Yoke
- 170. Anti Reverse Dog
- 178. Handle
- 179. Cast Control Bushing
- 184. Magnet Retainer Lock
- 185. Magnet Retainer
- 188. O Ring
- 191. Left Side Plate Screw
- 192. Left Stabilizer Bar Screw
- 198. Bearing Spacer
- 200. Magnetic Control Dial

### PART# DESCRIPTION

- 246. Anti Reverse Ratchet
- 249. Switch Spring
- 251. Retractor Spring
- 253A. Line Guide
- 265. Thrust Washer
- 268. Drive Shaft Shim
- 269. Right Side Plate
- 270. Cast Control Cap
- 271. Drive Gear
- 272. Pinion Gear
- 273. Anti Reverse Switch
- 274. Set Plate
- 275. Spool (Convertible)
- 276. Level Wind Gear
- 277. Left Bearing Spacer
- 278. Frame
- 279. Left Side Plate
- 310. Spool Shaft Bearing
- 325A. V Spool Converter

Prices and specifications subject to change without notice

JUNE 1986