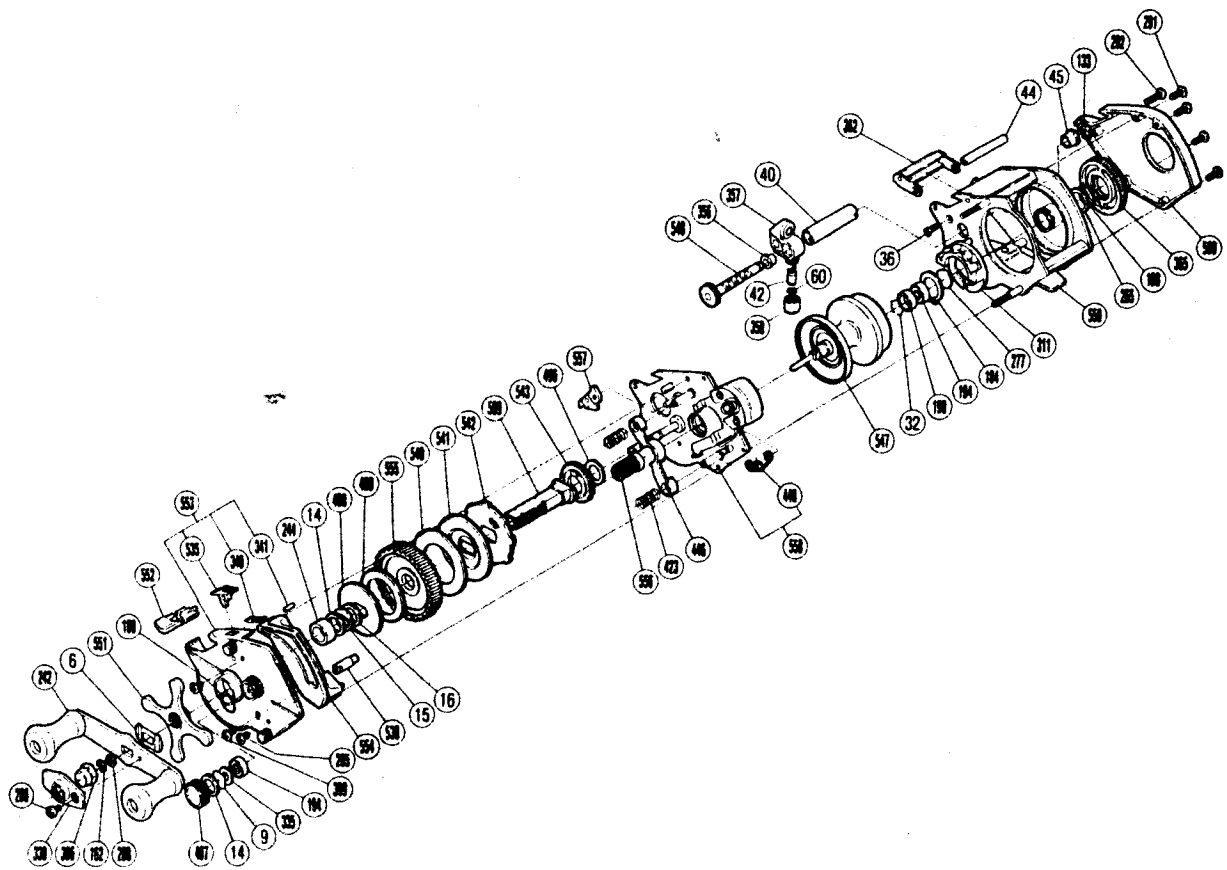


■EXPLODED PARTS VIEWS OF BSM-2201



■PARTS LIST OF BSM-2201

BNT No.	PARTS NAMES	BNT No.	PARTS NAMES
6	Friction Washer "A"	356	Worm Bearing "A"
9	Cast Control Spacer	357	Line Guide
14	Friction Washer "B"	358	Pawl Cap
15	Drag Spring Washer	362	Level Wind Protector
16	Friction Washer "C"	365	Magnetic Control Dial
32	Bearing Retainer	399	Retractor Guide Screw
36	Stabilizer Bar Screw "A"	423	Yoke Spring
40	Level Wind Guard	446	Yoke
42	Line Guide Pawl	448	Retractor Spring
44	Stabilizer Bar	487	Cast control Cap
45	Worm Bearing "B"	489	Key Washer "A"
60	Spacer(optional)	490	Drag Washer
133	Worm Shaft Retainer	496	Drive Shaft Washer "C"
162	Drive Shaft Retainer	509	Drive Shaft
184	Magnet Retainer Lock	535	Anti-Reverse Switch
188	O Ring	538	Retractor Guide
194	Ball Bearing	540	Drive Shaft Washer "B"
198	Bearing Spacer	541	Key Washer "B"
242	Handle Assembly	542	Anti-Reverse Ratchet
244	Bushing	543	Idle Gear
265	Spacer(optional)	547	Spool
268	Drive Shaft Washer "A"	548	Worm Shaft
277	Bearing Spacer "B"	551	Star Drag
280	Handle Nut Plate Screw	552	Left Side Plate Cover
285	Left Side Plate Screw	553	Left Side Plate
291	Right Side Plate Screw	554	Clutch Button Attachment
292	Stabilizer Bar Screw "B"	555	Drive Gear
306	Handle Nut	556	Pinion Gear
311	Magnet Retainer	557	Anti-Reverse Pawl
330	Handle Nut Plate	558	Set Plate Assembly
335	Bearing Washer "A"	559	Frame
340	Switch Spring	560	Right Side Plate
341	Switch Spring Lock		