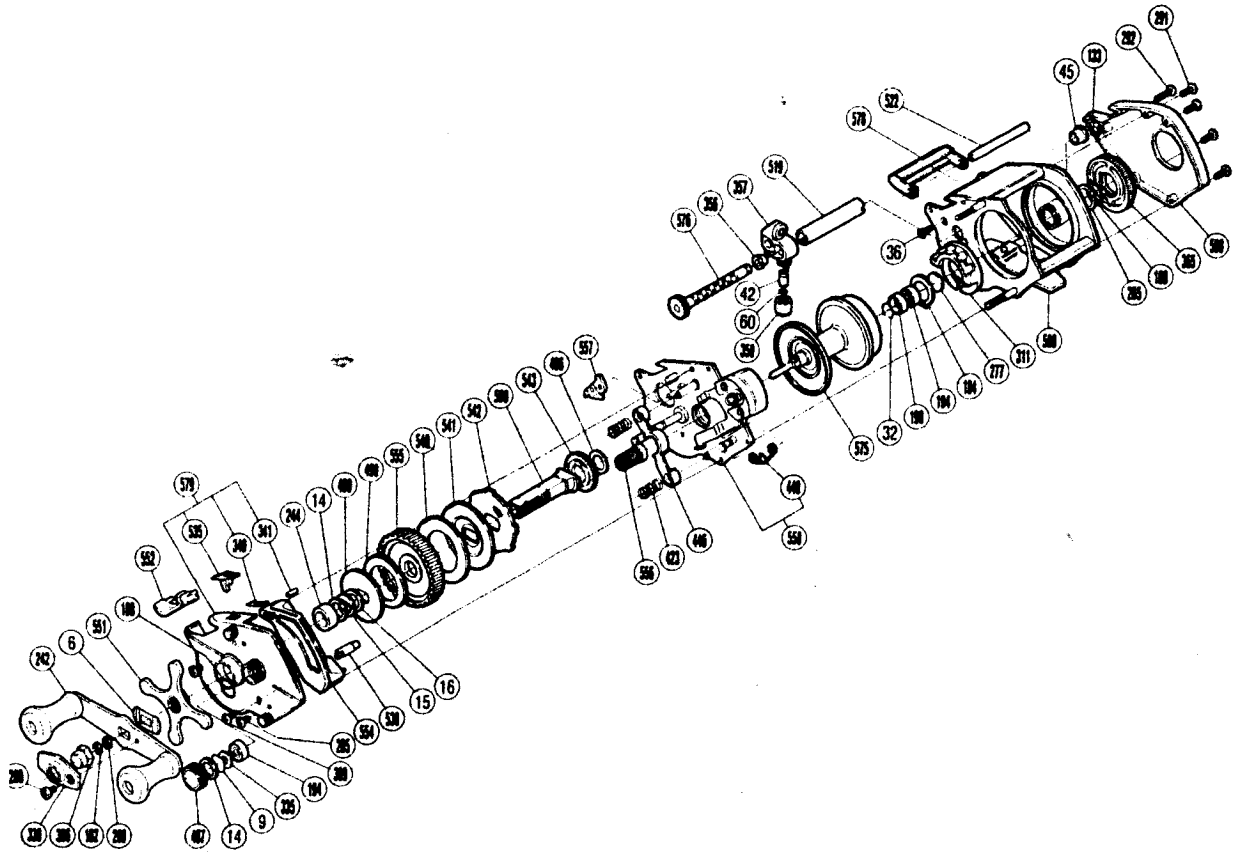


EXPLODED PARTS VIEWS OF BSM-2201W



■ PARTS LIST OF BSM-2201W

BNT No.	PARTS NAMES	BNT No.	PARTS NAMES
6	Friction Washer "A"	358	Pawl Cap
9	Cast Control Spacer	365	Magnetic Control Dial
14	Friction Washer "B"	399	Retractor Guide Screw
15	Drag Spring Washer	423	Yoke Spring
16	Friction Washer "C"	446	Yoke
32	Bearing Retainer	448	Retractor Spring
36	Stabilizer Bar Screw "A"	487	Cast Control Cap
42	Line Guide Pawl	489	Key Washer "A"
45	Worm Bearing "B"	490	Drag Washer
60	Spacer(optional)	496	Drive Shaft Washer "C"
133	Worm Shaft Retainer	509	Drive Shaft
162	Drive Shaft Retainer	519	Level Wind Guard
184	Magnet Retainer Lock	522	Stabilizer Bar
188	O Ring	535	Anti-Reverse Switch
194	Ball Bearing	538	Retractor Guide
198	Bearing Spacer	540	Drive Shaft Washer "B"
242	Handle Assembly	541	Key Washer "B"
244	Bushing	542	Anti-Reverse Ratchet
265	Spacer(optional)	543	Idle Gear
268	Drive Shaft Washer "A"	551	Star Drag
277	Bearing Spacer "B"	552	Left Side Plate Cover
280	Handle Nut Plate Screw	554	Clutch Button Attachment
285	Left Side Plate Screw	555	Drive Gear
291	Right Side Plate Screw	556	Pinion Gear
292	Stabilizer Bar Screw "B"	557	Anti-Reverse Pawl
306	Handle Nut	558	Set Plate Assembly
311	Magnet Retainer	560	Right Side Plate
330	Handle Nut Plate	575	Spool
335	Bearing Washer "A"	576	Worm Shaft
340	Switch Spring	578	Level Wind Protector
341	Switch Spring Lock	579	Left Side Plate
356	Worm Bearing "A"	580	Frame
357	Line Guide		