

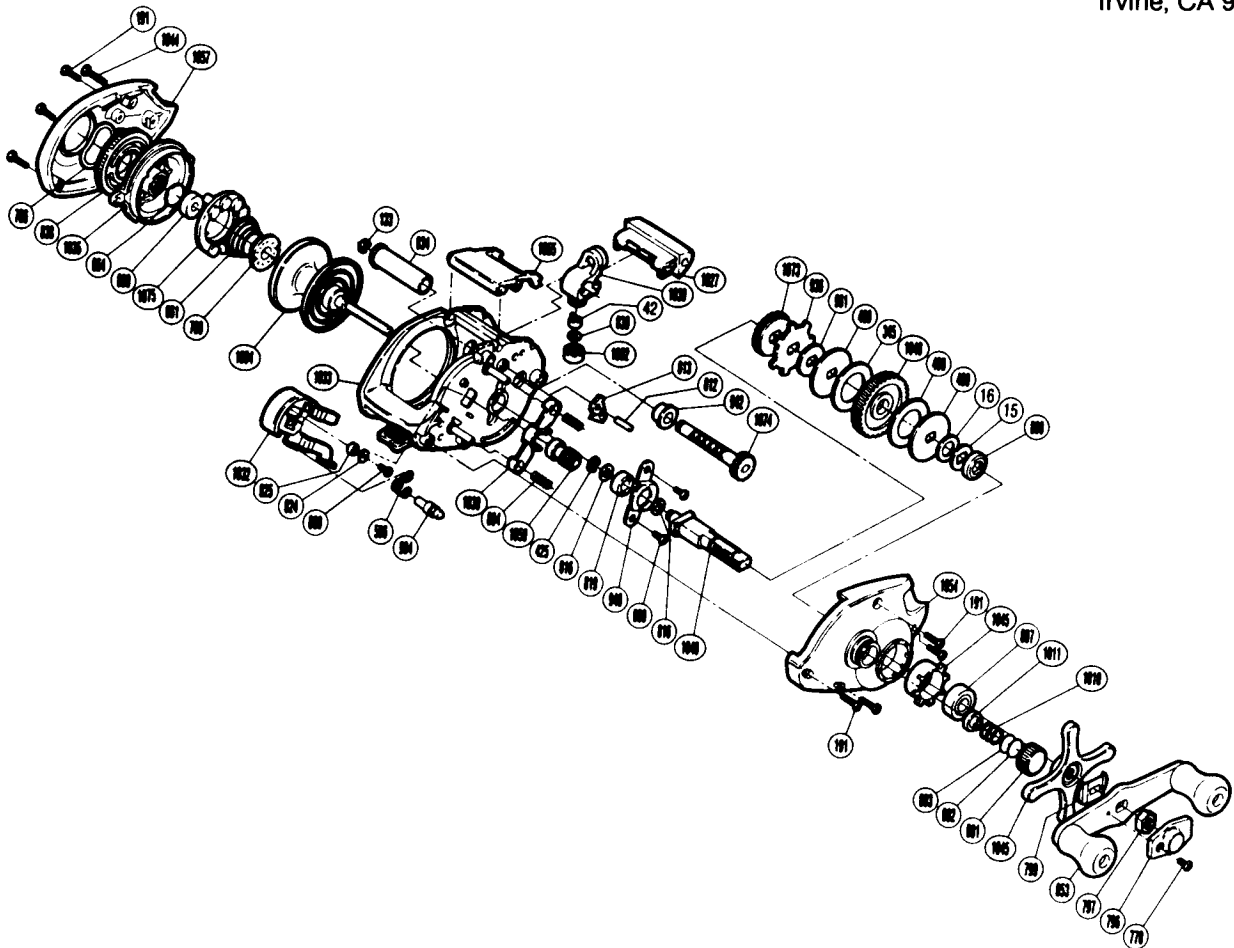
EXPLODED PARTS VIEW

Bantam MARK *Plus* *SpeedMaster*
150SM

SHIMANO®

1990 REPAIR MANUAL

Shimano American Corporation, One Shimano Dr.
Irvine, CA 92718



TO ORDER: USE BNT PREFIX
WITH PART NUMBER

PARTS LIST

BNT #	DESCRIPTION	BNT #	DESCRIPTION	BNT #	DESCRIPTION
0015	Drag Spring Washer	0799	Friction Washer	1010	Spool Tension Spring
0016	Friction Washer [C]	0801	Cast Control Cap	1011	Spool Shaft Bushing [A]
0042	Line Guide Pawl	0802	Spool Tension Spacer [B]	1027	Level Wind Protector
0133	Worm Shaft Retainer	0803	Spool Tension Spacer [A]	1030	Yoke
0191	Side Plate Screw	0807	Drive Shaft Bearing	1032	Clutch Button
0345	Drive Shaft Washer "B"	0808	Friction Washer [B]	1033	One-Piece Frame
0425	Clutchbutton Lock	0816	Drive Shaft Washer	1035	Dial Case
0489	Key Washer "A"	0819	Drive Shaft Bushing	1039	Line Guide
0490	Drag Washer	0824	Yoke Plate Bushing [B]	1044	Left Side Plate Screw
0596	Retractor Spring	0825	Yoke Plate Washer [A]	1045	Star Drag
0604	Yoke Spring	0830	Spacer [Optional]	1046	Bearing Holder
0609	Drive Shaft Retainer Screw	0834	Level Wind Guard	1048	Drive Gear
0612	Anti-Reverse Pawl Pin	0838	Magnetic Control Dial	1049	Drive Shaft
0613	Anti-Reverse Pawl	0853	Handle Assembly	1050	Pinion Gear
0661	Magnet Retainer Spring	0880	Spool Shaft Bushing [C]	1054	Right Side Plate
0664	Spacer [B]	0936	Anti-Reverse Ratchet	1055	Thumb Rest
0766	Dial Friction Washer	0940	Drive Shaft Retainer	1057	Left Side Plate
0770	Handle Nut Plate Screw	0942	Worm Bearing	1073	Idle Gear
0780	Magnet Retainer Lock	0961	Key Washer "B"	1074	Worm Shaft
0796	Handle Nut Plate	0994	Retractor Spring Pin	1075	Magnet Retainer
0797	Handle Nut				

Prices and specifications subject to change without notice.

1/1990