

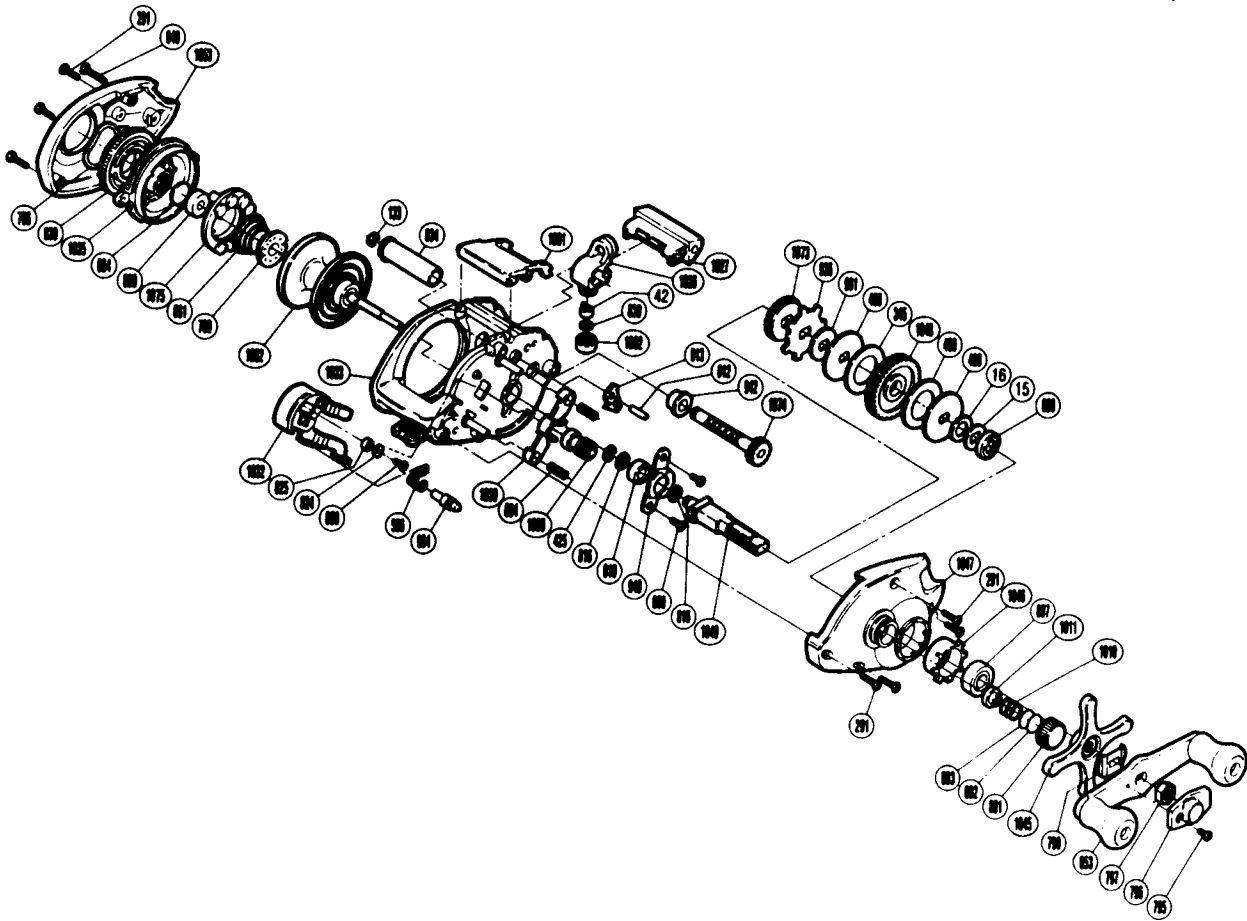
# EXPLODED PARTS VIEW

Bantam MARK *Plus* *SpeedMaster*  
250SM

# SHIMANO®

## 1990 REPAIR MANUAL

Shimano American Corporation, One Shimano Dr.  
Irvine, CA 92718



**TO ORDER: USE BNT PREFIX  
WITH PART NUMBER**

### PARTS LIST

BNT #	DESCRIPTION	BNT #	DESCRIPTION	BNT #	DESCRIPTION
0015	Drag Spring Washer	0799	Friction Washer	1010	Spool Tension Spring
0016	Friction Washer (C)	0801	Cast Control Cap	1011	Spool Shaft Bushing (A)
0042	Line Guide Pawl	0802	Spool Tension Spacer (B)	1026	Line Guide
0133	Worm Shaft Retainer	0803	Spool Tension Spacer (A)	1027	Level Wind Protector
0291	Side Plate Screw	0807	Drive Shaft Bearing	1030	Yoke
0345	Drive Shaft Washer "B"	0808	Friction Washer (B)	1032	Clutch Button
0425	Clutchbutton Lock	0816	Drive Shaft Washer	1033	One-Piece Frame
0489	Key Washer "A"	0819	Drive Shaft Bushing	1035	Dial Case
0490	Drag Washer	0824	Yoke Plate Washer (B)	1045	Star Drag
0596	Retractor Spring	0825	Yoke Plate Washer (A)	1046	Bearing Holder
0604	Yoke Spring	0830	Spacer (Optional)	1047	Right Side Plate
0609	Drive Shaft Retainer Screw	0834	Level Wind Guard	1048	Drive Gear
0612	Anti-Reverse Pawl Pin	0838	Magnetic Control Dial	1049	Drive Shaft
0613	Anti-Reverse Pawl	0840	Left Side Plate Screw	1050	Pinion Gear
0661	Magnet Retainer Spring	0853	Handle Assembly	1051	Thumb Rest
0664	Spacer (B)	0880	Spool Shaft Bushing (C)	1052	Spool Assembly
0766	Dial Friction Washer	0936	Anti-Reverse Ratchet	1053	Left Side Plate
0780	Magnet Retainer Lock	0940	Drive Shaft Retainer	1073	Idle Gear
0795	Handle Nut Plate Screw	0942	Worm Bearing	1074	Worm Shaft
0796	Handle Nut Plate	0961	Key Washer "B"	1075	Magnet Retainer
0797	Handle Nut	0994	Retractor Spring Pin		

Prices and specifications subject to change without notice.

1/1990