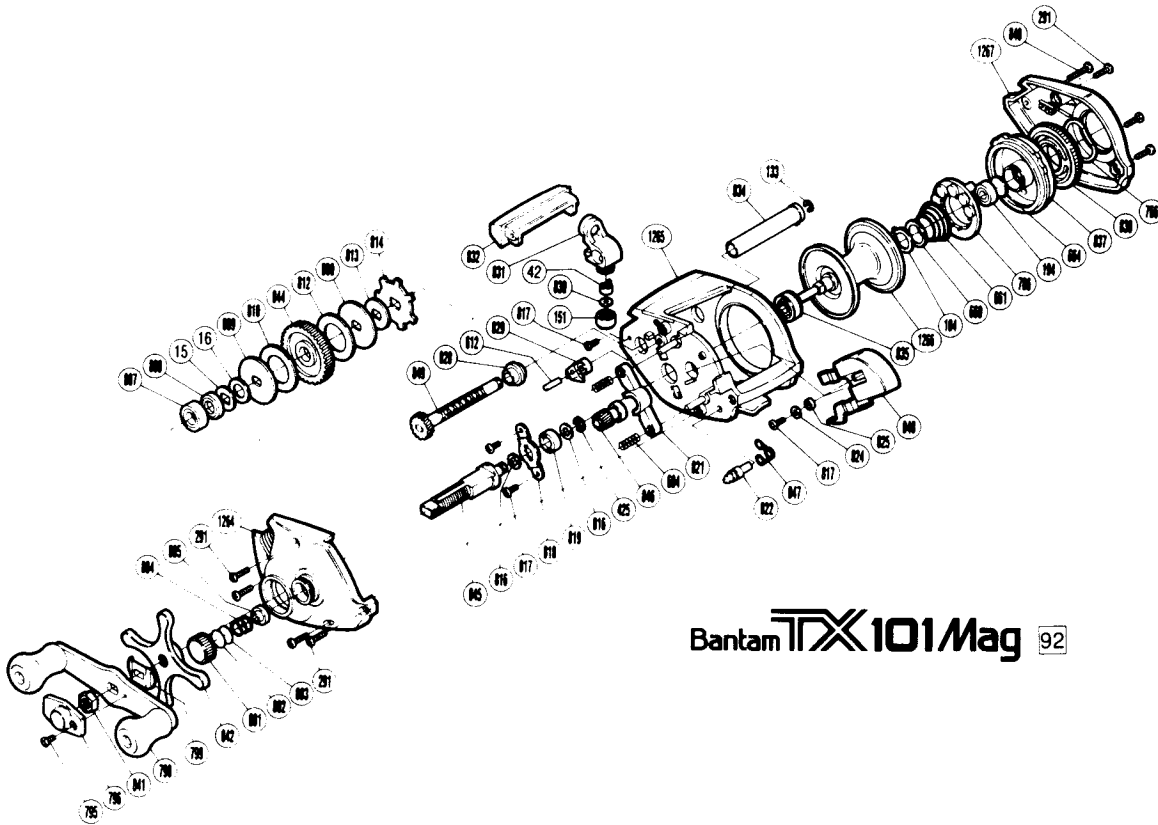


SHIMANO

1992 REPAIR MANUAL

Shimano American Corporation, One Shimano Dr.
Irvine, CA 92718



Bantam **TX101** Mag 92

BNT No.	PARTS NAMES	BNT No.	PARTS NAMES	BNT No.	PARTS NAMES
0015	Drag Spring Washer	0807	Drive Shaft Bearing	0841	Handle Nut
0016	Friction Washer (C)	0808	Friction Washer (B)	0842	Star Drag
0042	Line Guide Pawl	0809	Key Washer (A)	0844	Drive Gear
0133	Worm Shaft Retainer	0810	Drag Washer (A)	0845	Drive Shaft
0151	Pawl Cap	0812	Drag Washer (B)	0846	Pinion Gear
0184	Magnet Retainer Lock	0813	Key Washer (B)	0847	Retractor Spring
0194	Ball Bearing	0814	Anti-Reverse Ratchet	0848	Clutch Button
0291	Side Plate Screw	0816	Drive Shaft Washer	0849	Worm Shaft
0425	Drive Shaft Retainer	0817	Multi Purpose Screw	1264	Left Side Plate
0604	Yoke Spring	0818	Drive Shaft Retainer	1265	One-Piece Frame
0612	Anti-Reverse Pawl Pin	0819	Drive Shaft Bushing	1266	Spool
0660	Spring Spacer	0821	Yoke	1267	Right Side Plate
0661	Magnet Retainer Spring	0822	Retractor Spring Pin		
0664	Spacer (B)	0824	Yoke Plate Washer (B)		
0706	Magnet Retainer	0825	Yoke Plate Washer (A)		
0766	Dial Friction Washer	0828	Worm Bearing		
0795	Handle Nut Plate Screw	0829	Anti-Reverse Pawl		
0796	Handle Nut Plate	0830	Spacer (optional)		
0798	Handle Assembly	0831	Line Guide		
0799	Friction Washer (A)	0832	Level Wind Protector		
0801	Cast Control Cap	0834	Level Wind Guard		
0802	Spool Tension Spacer (B)	0835	Spool Shaft Bushing (B)		
0803	Spool Tension Spacer (A)	0837	Dial Case		
0804	Spool Tension Spring	0838	Magnetic Control Dial		
0805	Spool Shaft Bushing (A)	0840	Right Side Plate Screw		

Prices and specifications subject to change without notice

(030510)