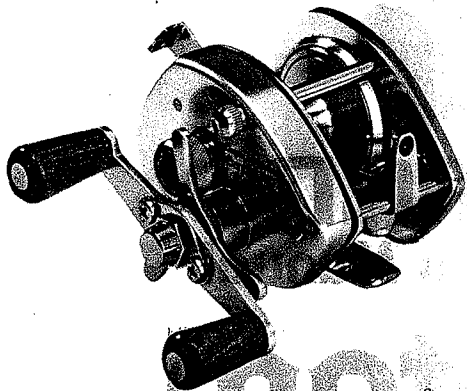


**SHIMANO**

Instruction Manual

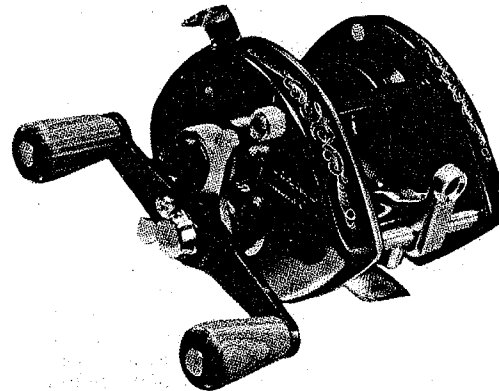
**Bantam**<sup>TM</sup>  
Casting Reel

## Bantam 100 200



Designed especially to meet the needs of the avid light tackle baitcaster and the bass fisherman. Lightweight construction, fast retrieve, perfect palm fit and a host of outstanding performance features make the Bantam 100 and 200 *the* reel that today's bass fishermen are coming to!

## Bantam 100EX



The specialist's Bantam..... with the same great performance features of the Bantam 100·200 and an exclusive lure control mechanism. The BantamEX is capable of casting a broad range of lures down to 1/16 oz. on four or six pound test lines for the true ultra light baitcaster.

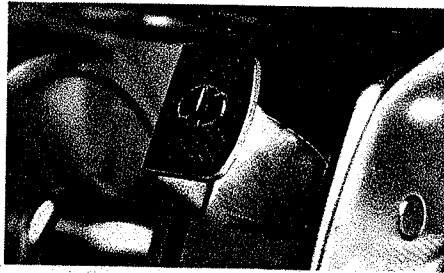


### Cast Control Knob

Tightening (clockwise rotation) the cast control knob applies pressure to the end of the spool shaft so that the spool does not spin freely. Proper adjustment is essential for maximum casting performance, especially under adverse conditions or with mismatched lines and lures.

There is a loose square copper plate (called a friction shim) inside the cast control knob. Check it for wear. When worn, turn it over. Once both sides are worn, replace it with an extra friction shim found in your spare parts kit.

**Maintenance required:** remove the cast control knob and place a drop of oil on the tip of the spool shaft.

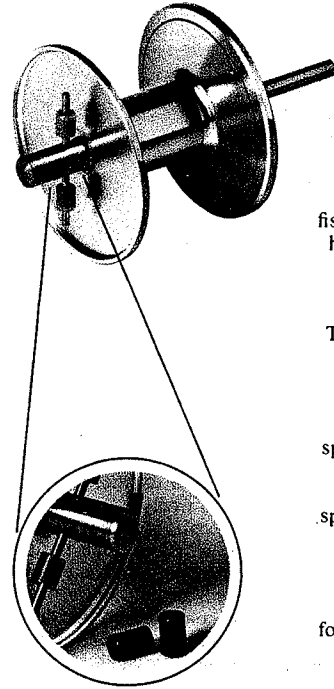


### The Spool Release Button

The first step in a successful cast is to depress the spool release button. The button on your Bantam offers a wide, easy to find face that makes this initial casting step second nature. When the spool release button is fully depressed, the gearing and level wind systems disengage. This allows totally free movement of the Hi-Rev spool for maximum casting speed and distance.

To reengage the gearing and level wind systems, simply rotate the handle one-quarter turn—the spool release button will pop back up and you are ready to retrieve.

**Maintenance required:** Lubricate with light oil (supplied).



### The Spool

The Hi-Rev spool is narrow with an extra large diameter. Unique design allows maximum speed on the cast and faster line take-up on the retrieve. Bantam's spool is precision built within tolerances that prevent even six lb. line from getting caught behind the spool.

A black band on the spool wall indicates recommended line capacity for general light tackle baitcasting. Long range, open water fishermen may fill the spool past this level, however, overfilled spools have a greater tendency to backlash and can present increased spool control problems.

### Centrifugal Brake Weights

The brake weight system is located on the left hand side of the spool (right side on 100 EX model). Its purpose is to maintain smooth acceleration on the cast, thus lessening the chance of overruns and backlash.

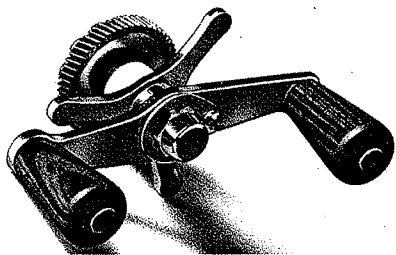
As the spool rotates on the cast, the centrifugal force of the turning spool forces the counterbalance weights to the ends of the pins. There they contact and rub along the inside wall of a circular raceway.

Friction created by these weights helps smooth acceleration. As spool speed increases, so does the pressure applied by these weights.

Thus, you have equal spool control for short, fast *and* long, lobbing open water casts.

Two pairs of counter balance weights are supplied. Use the large weights for short, brush busting spinnerbait fishing. Smaller weights for general light tackle baitcasting and long range, open water fishing.

**Maintenance required:** Clean raceway periodically. Do not lubricate.



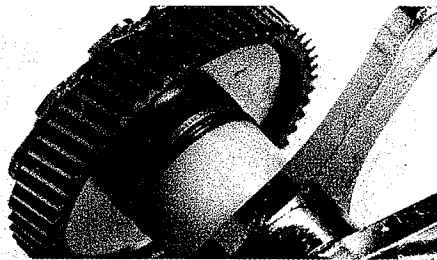
## Handle

Bantam boasts a lightweight, yet incredibly strong handle. The turning radius is designed for a fast retrieve with plenty of torque for fish fighting power. Natural hardwood grips are as comfortable as they are good looking and they ride on a stainless steel shaft.

**Maintenance required:** Rinse often and lubricate grip shafts with lightweight oil (supplied).

## Drag System

The drag system provides smooth slippage as a fish runs line off the spool. Drag tension is regulated by a tri-star drag control. Rotating the control clockwise compresses a series of drag wash-

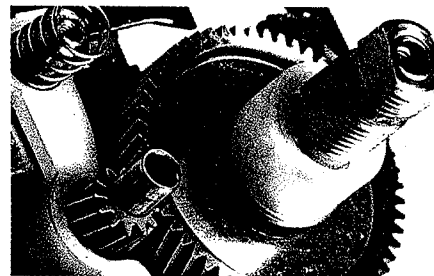


ers which in turn apply pressure to the gear train and spool. By adjusting the tri-star, you can dictate the degree of resistance that the drag offers to a running fish.

### How to adjust the drag:

1. Rotate the handle so that the spool release button is in the OUT position.
2. Turn the tri-star drag control counter-clockwise until the spool rotates freely.
3. Slowly tighten the drag control (clockwise) and check spool tension with each one third turn. (To test tension: manually pull line off spool.)
4. Continue to tighten the control until the desired degree of resistance is achieved.

**Maintenance required:** None



## Main and Pinion Gears

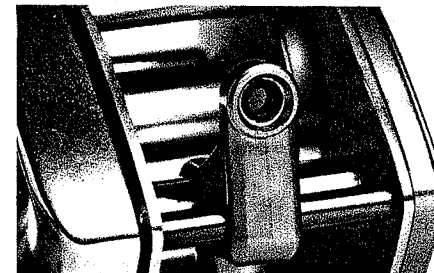
The gears are big, the retrieve ratio—a fast 4.7:1! Bantam's combination of big gears and large diameter spool means fast line take-up on the retrieve and plenty of power to fight big fish.

**Maintenance required:** Lubricate with light grease.

## Level Wind

With ordinary reels, the level wind is permanently engaged in the gearing system. Make a cast and the level wind races frantically back and forth, thereby robbing the spool of momentum and the fisherman of casting distance.

Not so with the Bantam. When the spool re-



lease button is depressed, the entire gearing and level wind system disengages, allowing totally free movement of the spool and longer casts.

On the retrieve, the level wind engages and line is cross wound evenly across the spool, thus preventing bunch-up and lessening the danger of line cutting into its own mass when fighting a big fish or freeing a hung-up lure.

The level wind guide ring is diamond polished aluminum oxide—one of the hardest materials known to man. Its smooth surface reduces friction to assure less line wear and greater casting distance.

**Maintenance required:** Clean and oil level wind guide bar and level wind guard often. Lubricate level wind worm gear with light grease.

## Take Down for General Cleaning

For identification and location of parts, see: Exploded View.

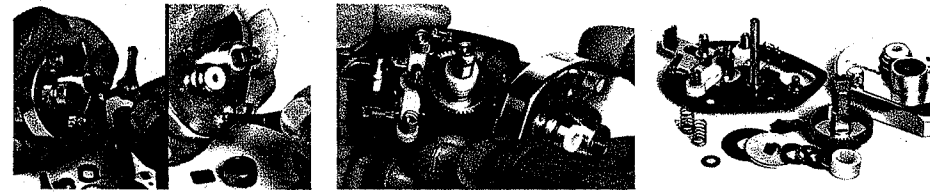
1. Select a clean, flat work area. Use the wrench supplied in your Bantam parts kit for disassembly.
2. Rotate handle 1/4 turn to place spool release button in the OUT position.
3. Loosen the two (2) knurled finger screws on the right side plate and remove the right side plate.
4. Carefully lift the spool out of the housing. Do not lose counter balance weights on left side of spool. Set the spool aside.
5. Pick up right side plate (handle side up).
6. Remove handle locking plate screw.
7. Lift off handle locking plate.
8. Remove handle retainer nut.
9. Remove drive shaft screw.
10. Lift off handle.
11. Lift off tension washer (remember bent ends face up).
12. Unscrew (counter-clockwise) and remove



13. Loosen and remove the cast control knob. Check the friction shims (inside knob) for wear. Turn over or replace as necessary.
14. Loosen and remove the two (2) side plate retaining screws.
15. Lift off the right side plate and set the mechanism down so that the main gear faces up.
16. Remove the main gear by grasping the drive shaft, rotating 1/2 turn clockwise and lifting

up. Turn it over and tap lightly to remove the drag washers. Note their sequence (from to white nylon bushing, small brass, small aluminum, small rubber, big aluminum and big leather. There is also a small brass washer under the main gear.)

17. Lift off the anti-reverse dog.
18. Lift off the two (2) pinion yoke springs.
19. With the exception of the level wind, yo Bantam is now completely disassembled f

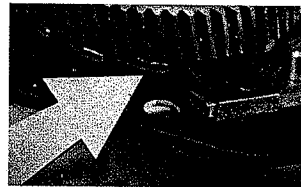
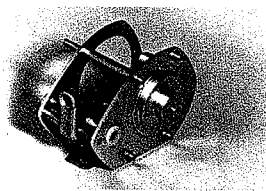
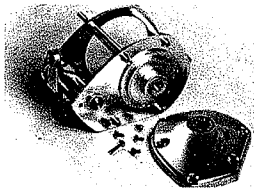


cleaning and lubrication. Clean reel with a toothbrush and light penetrating spray (WD-40, CRC, etc.). Wipe with a clean cloth.

### Reassembling the Bantam

Retrace the takedown steps in order to reassemble your reel. Note these two important steps: A.

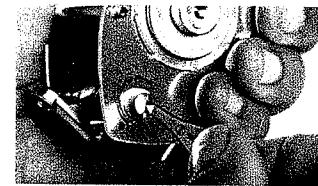
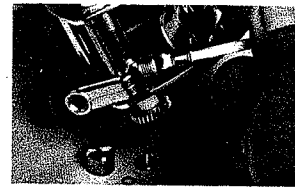
Be sure the antireverse dog is positioned properly with one of the two copper tabs on either side of the drive shaft gear—like a sandwich. It may be necessary to pry the sleeves apart slightly (with the screwdriver end of your take down wrench) in order to position them correctly. **B.** Do not overtighten any screws or nuts. When properly positioned, they will turn with a minimum of force.



## Level Wind Take Down for Cleaning

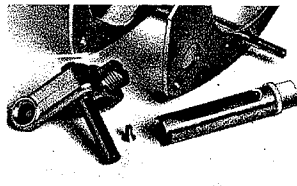
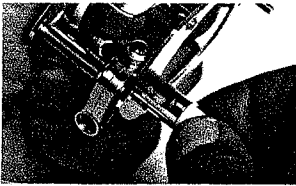
**Note: If the reel is already disassembled for general cleaning, omit Step #1.**

1. Remove the right and left side plates.
2. Loosen and remove the level wind guide nut, taking care not to lose the small brass washer that is inside some models. Remove the pawl by inserting the whittled end of a wooden match stick in the hole and rotating as you lift the pawl out.
3. Remove the brass worm gear screw on the left side. (Note: This is a reverse threaded screw; turn it *clockwise* to remove.)
4. Pull the worm gear out thru the right side.
5. Pull out the nylon worm gear bushing on the left side plate.



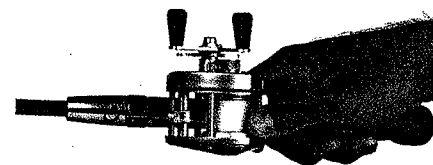
- 6. Remove the level wind guard by pulling on the white nylon bushing on the right side plate. Pull the guard completely thru the right side plate.
- 7. Loosen and remove the level wind stabilizer bar screw (on the left side plate). Lift the stabilizer bar and level wind guide out. The level wind is now fully disassembled. Fur-

ther take down should be performed *only* by a factory authorized repair station or Shimano service personnel.  
 Clean the level wind with a toothbrush and light penetrating spray (WD-40, CRC, etc.). To reassemble level wind, retrace the take down steps. (Be sure the pawl is inserted with the teeth parallel to the side plates.)



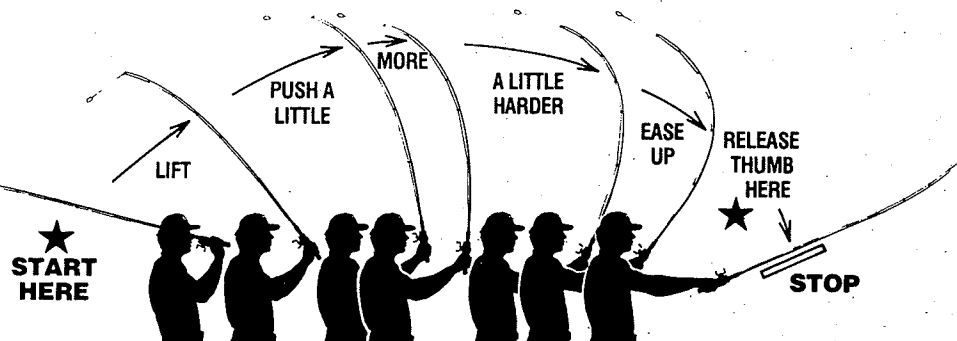
## LEARNING TO CONTROL THE REEL

- Fill the reel with line—attach your favorite type lure less the hooks.
- Choose a target in your yard some 30 feet away. A trash can is perfect.
- Tighten cast control knob.
- Reel the lure to within 6 inches of the rod tip.
- Push in spool release button.
- Loosen cast control knob until lure falls.
- Stop the descent of the lure by tightening the cast control knob—then turn knob ¼ turn more.
- Reel the lure back up to within 6 inches of the rod tip.
- Place rod in casting hand—thumb on left side of spool and frame—reel handle pointing straight up—push in spool release button.
- Do not make any moves hurriedly or hard.
- Note now the diagram. . .
- Put your eyes on the target—lay the rod over your shoulder—come forward in a sweeping, almost slow-motion lopping action. Release the thumb when it feels right—go for a high arcing cast—and keep your thumb off the spool (reel) throughout the cast—do not stop the line with the thumb.
- If the spool backlashes . . . tighten the cast control.
- If you can't reach the target—loosen the cast control. Practice will now make perfect.



Keep the reel handle facing up during the entire casting sequence.

## LEARNING TO CONTROL THE REEL



This sequence may seem too primary for many educated baitcasters. But its purpose is to teach the capabilities of the reel as well as helping the novice learn to cast. Actual fishing afterwards will be far easier for both.

## THE BASICS OF A PROPERLY EXECUTED CAST

The casting process requires muscle, speed and timing in order to fire a lure accurately and at great distances.

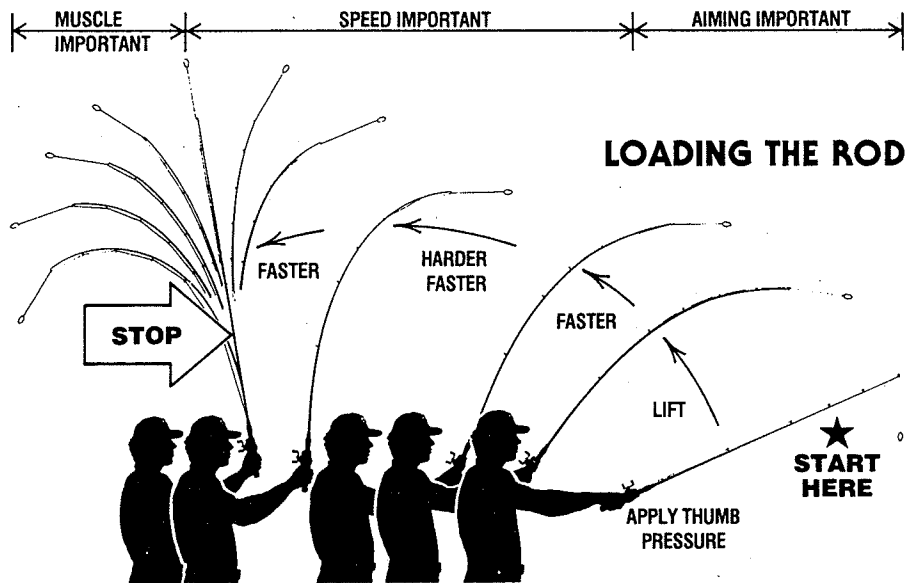
Turn the cast control knob  $\frac{1}{4}$  turn tighter and worry only about backlash . . . not distance.

Use the forearm muscles for power—use the wrist as a lever and the wrist muscles as a stopping action. Keep your elbow down—not necessarily against your side . . . but down!

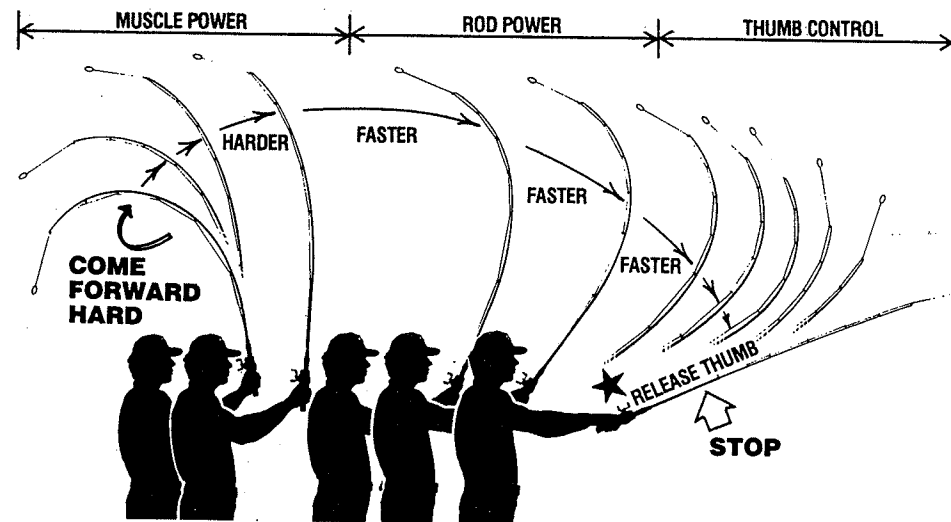
Place your thumb on the left side of the spool to help monitor the line speed during the cast. Educate the thumb before making cast control too loose.

Dry run slowly through the **LOADING THE ROD DIAGRAM**. Learn to stop the rod at 1 o'clock. Now the firing sequence. Try it slowly and release the thumb when you feel comfortable. Don't worry about a target—just throw it! Pay strict attention to the lure release timing.





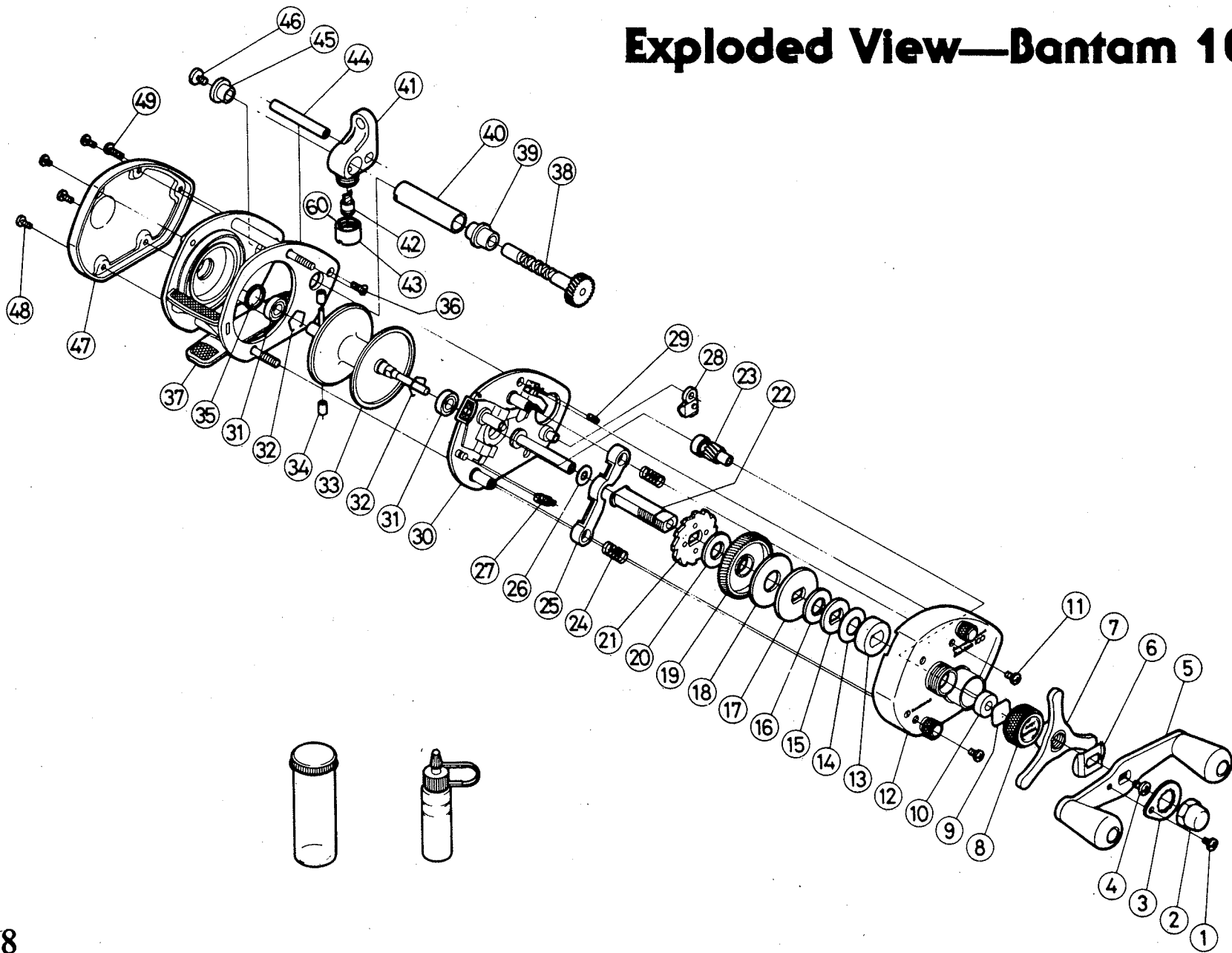
The critical phase here is to have enough backward speed to apply a full bend to the rod shaft when the wrist stops the rod at 1 o'clock.



### FIRING THE LURE

Halfway through the forward motion, the power of the rod shaft will take over the cast. Stop the downward motion of the rod with a rigid wrist and forearm. Release the thumb.

# Exploded View—Bantam 100



# Parts List—Bantam 100

- 1—Handle Nut Lock Screw
- 2—Handle Nut
- 3—Handle Nut Lock Plate
- 4—Drive Shaft Retainer Screw
- 5—Handle
- 6—Friction Washer
- 7—Drag Tri-Star
- 8—Cast Control Cap
- 9—Cast Control Spacer
- 10—Cast Control Bushing
- 11—Right Sideplate Screw
- 12—Right Sideplate
- 13—Drive Shaft Bearing
- 14—Drag Spring Washer
- 15—“D” Washer
- 16—Drag Spacer
- 17—Pressure Plate
- 18—Drag Washer
- 19—Drive Gear
- 20—Base Drag Washer
- 21—Antireverse Ratchet
- 22—Drive Shaft
- 23—Pinion Gear
- 24—Pinion Yoke Spring
- 25—Pinion Yoke
- 26—Drive Shaft Shim
- 27—Retractor Spring #1
- 28—Anti Reverse Dog
- 29—Retractor Spring #2
- 30—Set Plate
- 31—Spool Shaft Bearing
- 32—Bearing Lock
- 33—Spool
- 34—Centrifugal Brake Weights
- 35—Left Bearing Spacer
- 36—Right Stabilizer Bar Screw
- 37—Frame Assembly
- 38—Level Wind Gear
- 39—Level Wind Bearing (Right)
- 40—Level Wind Guard
- 41—Line Guide
- 42—Level Wind Pawl
- 43—Pawl Cap
- 44—Line Guide Stabilizer Bar
- 45—Level Wind Bearing (Left)
- 46—Level Wind Retainer Screw
- 47—Left Side Plate
- 48—Left Side Plate Screw
- 49—Left Stabilizer Bar Screw
- 60—Line Guide Pawl Spacer



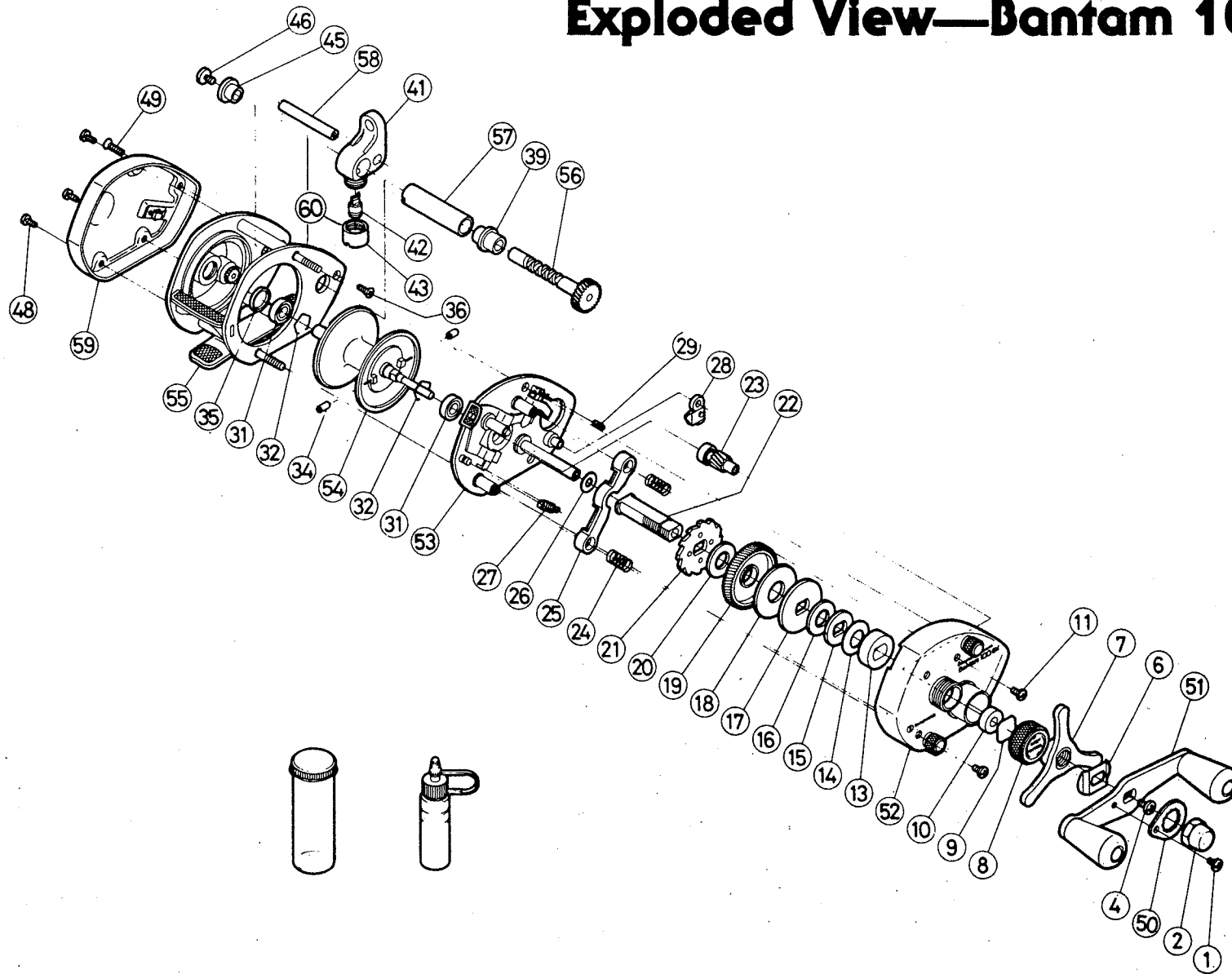
## Parts List—Bantam 200

- 1—Handle Nut Lock Screw
- 2—Handle Nut
- 3—Handle Nut Lock Plate
- 4—Drive Shaft Retainer Screw
- 5—Handle
- 6—Friction Washer
- 7—Drag Tri-Star
- 8—Cast Control Cap
- 9—Cast Control Spacer
- 10—Cast Control Bushing
- 11—Right Sideplate Screw
- 12—Right Sideplate
- 13—Drive Shaft Bearing
- 14—Drag Spring Washer
- 15—“D” Washer
- 16—Drag Spacer
- 17—Pressure Plate
- 18—Drag Washer
- 19—Drive Gear
- 20—Base Drag Washer
- 21—Antireverse Ratchet
- 22—Drive Shaft
- 23—Pinion Gear
- 24—Pinion Yoke Spring
- 25—Pinion Yoke

- 26—Drive Shaft Shim
- 27—Retractor Spring #1
- 28—Anti Reverse Dog
- 29—Retractor Spring #2
- 30—Set Plate
- 31—Spool Shaft Bearing
- 32—Bearing Lock
- 34—Centrifugal Brake Weights
- 35—Left Bearing Spacer
- 36—Right Stabilizer Bar Screw
- 39—Level Wind Bearing (Right)
- 41—Line Guide
- 42—Level Wind Pawl
- 43—Pawl Cap
- 45—Level Wind Bearing (Left)
- 46—Level Wind Retainer Screw
- 48—Left Side Plate Screw
- 49—Left Stabilizer Bar Screw
- 60—Line Guide Pawl Spacer
- 61—Spool
- 62—Frame Assembly
- 63—Level Wind Gear
- 64—Level Wind Guard
- 65—Line Guide Stabilizer Bar
- 66—Left Side Plate

No. 61~66 are for Bantam 200 only.

# Exploded View—Bantam 100EX



## Parts List—Bantam 100EX

- 1—Handle Nut Lock Screw
- 2—Handle Nut
- 4—Drive Shaft Retainer Screw
- 6—Friction Washer
- 7—Drag Tri-Star
- 8—Cast Control Cap
- 9—Cast Control Spacer
- 10—Cast Control Bushing
- 11—Right Side Plate Screw
- 13—Drive Shaft Bearing
- 14—Drag Spring Washer
- 15—D Washer
- 16—Drag Spacer
- 17—Pressure Plate
- 18—Drag Washer
- 19—Drive Gear
- 20—Base Drag Washer
- 21—Anti Reverse Ratchet
- 22—Drive Shaft
- 23—Pinion Gear
- 24—Pinion Yoke Spring
- 25—Pinion Yoke
- 26—Drive Shaft Shim
- 27—Retractor #1
- 28—Anti Reverse Dog
- 29—Retractor Spring #2
- 31—Spool Shaft Bearing
- 32—Bearing Lock
- 34—Centrifugal Brake Weights
- 35—Left Bearing Spacer
- 36—Right Stabilizer Bar Screw
- 39—Level Wind Bearing (Right)
- 41—Line Guide
- 42—Level Wind Pawl
- 43—Pawl Cap
- 45—Level Wind Bearing (Left)
- 46—Level Wind Retainer Screw
- 48—Left Side Plate Screw
- 49—Left Stabilizer Bar Screw
- 50—Handle Nut Lock Plate
- 51—Handle
- 52—Right Side Plate
- 53—Set Plate
- 54—Spool
- 55—Frame Assembly
- 56—Level Wind Gear
- 57—Level Wind Guard
- 58—Line Guide Stabilizer Bar
- 59—Left Side Plate
- 60—Line Guide Pawl Spacer

## How to Order Parts

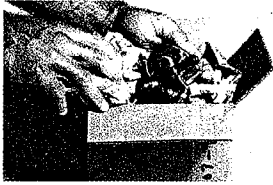
Refer to the Exploded View for parts identification and location. To order parts, include the part name, number and your address. Send to the Shi-

mano location indicated below. The part(s) will be shipped to you C.O.D. Mail parts request to:  
**Shimano American Corp.**  
Fishing Tackle Service Division  
108 Hobart St.  
Hackensack, N. J. 07602

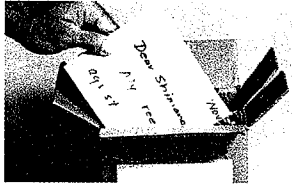
## Reel Repair Service

At Shimano, we pride ourselves on customer satisfaction *after* the sale. We maintain a skilled staff of factory trained technicians to service all products bearing the Shimano name. For repair

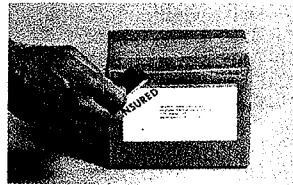
service (1) pack the product securely (2) enclose a note identifying the problem. (3) return post-paid, insured to:  
**Shimano American Corp.**  
Fishing Tackle Service Division  
108 Hobart St.  
Hackensack, N. J. 07602



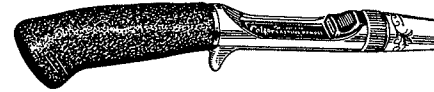
*Pack it well.*



*Address outside and inside.  
Tell us the problem.*



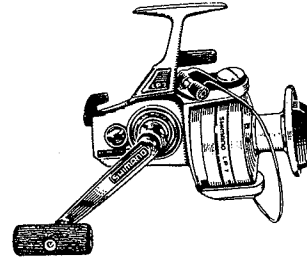
*Insure and ship.*



### Casting Rods with Shimano's Unique Colfor™ Handle

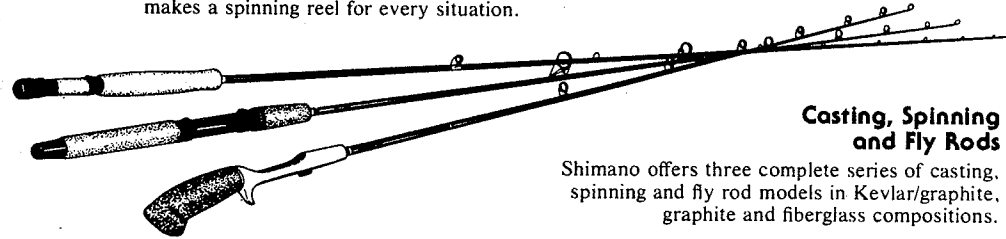
The new lightweight Colfor handle perfectly matches the Bantam in feel, performance and appearance. And . . . it's standard on all Shimano Kevlar/graphite and graphite casting rods.

**Shimano offers a complete line of rods and reels**



### Skirted Spool Spinning Reels

These reels cover the waterfront with outstanding performance. From quiet mountain streams to raging surf . . . Shimano makes a spinning reel for every situation.



### Casting, Spinning and Fly Rods

Shimano offers three complete series of casting, spinning and fly rod models in Kevlar/graphite, graphite and fiberglass compositions.