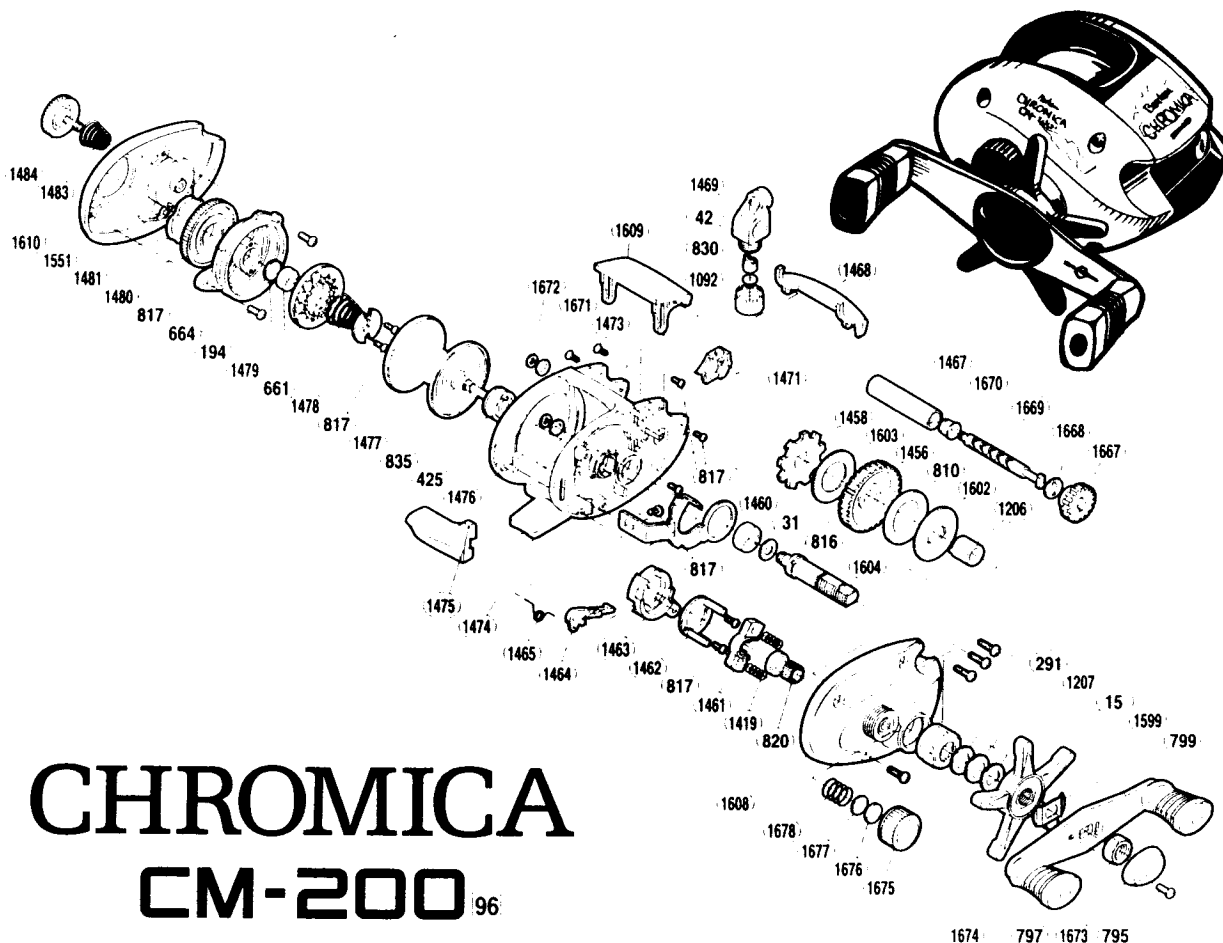


SHIMANO

1996 Repair Supplement



CHROMICA

CM-200⁹⁶

CM200

| Part # | Description | Part # | Description | Part # | Description |
|---------|--------------------------|---------|--------------------------|---------|--------------------------|
| BNT0015 | Drag Spring Washer | BNT1458 | Anti-Reverse Ratchet | BNT1551 | Dial Friction Washer |
| BNT0031 | Ball Bearing | BNT1460 | Clutch Plate | BNT1599 | Star Drag |
| BNT0042 | Line Guide Pawl | BNT1461 | Yoke | BNT1602 | Key Washer |
| BNT0194 | Ball Bearing | BNT1462 | Clutch Cam Retainer | BNT1603 | Drive Shaft Washer |
| BNT0291 | Right Side Plate Screw | BNT1463 | Clutch Cam | BNT1604 | Drive Shaft |
| BNT0425 | Drive Gear Retainer | BNT1464 | Clutch Pawl | BNT1608 | Right Side Plate |
| BNT0661 | Magnet Retainer Spring | BNT1465 | Clutch Pawl Spring | BNT1609 | Thumb Rest |
| BNT0664 | Spacer (B) | BNT1467 | Level Wind Guard | BNT1610 | Left Side Plate |
| BNT0795 | Handle Nut Plate Screw | BNT1468 | Level Wind Protector | BNT1667 | Worm Gear |
| BNT0797 | Handle Nut | BNT1469 | Line Guide | BNT1668 | Worm Shaft Washer (A) |
| BNT0799 | Friction Washer | BNT1471 | Drive Shaft Cover | BNT1669 | Worm Shaft |
| BNT0810 | Drag Washer | BNT1473 | Multi-Purpose Screw | BNT1670 | Worm Bushing |
| BNT0816 | Drive Shaft Washer | BNT1474 | One-Piece Frame | BNT1671 | Worm Shaft Washer (B) |
| BNT0817 | Multi-Purpose Screw | BNT1475 | Quick-Fire II Clutch Bar | BNT1672 | "E" Lock |
| BNT0820 | Pinion Gear | BNT1476 | Drive Shaft Washer (D) | BNT1673 | Handle Nut Plate |
| BNT0830 | Spacer (optional) | BNT1477 | Spool | BNT1674 | Handle Assembly |
| BNT0835 | Spool Shaft Bushing (B) | BNT1478 | Magnet Holder | BNT1675 | Cast Control Cap |
| BNT1092 | Pawl Cap | BNT1479 | Magnet Retainer | BNT1676 | Spool Tension Spacer (B) |
| BNT1206 | Roller Clutch Inner Tube | BNT1480 | Dial Case | BNT1677 | Spool Tension Spacer (A) |
| BNT1207 | Roller Clutch Bearing | BNT1481 | Magnetic Control Dial | BNT1678 | Spool Tension Spring |
| BNT1419 | Yoke Spring | BNT1483 | Lock Spring | | |
| BNT1456 | Drive Gear | BNT1484 | Lock Screw Cap | | |