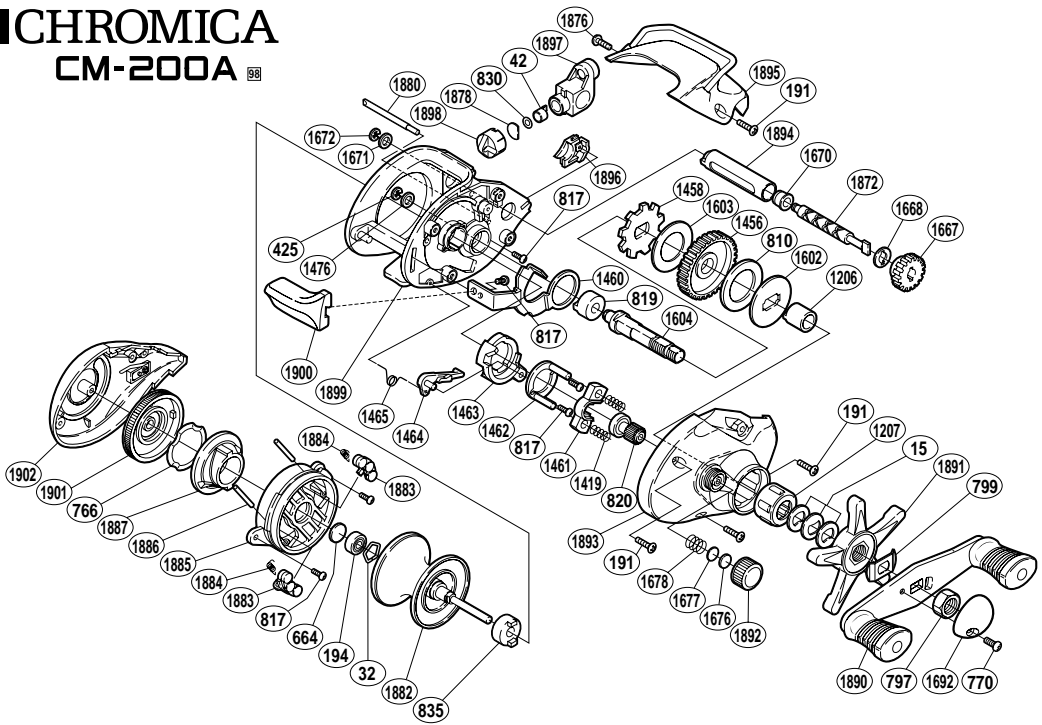


CHROMICA

CM-200A ®



BNT No.	PARTS NAMES	BNT No.	PARTS NAMES	BNT No.	PARTS NAMES
0015	Drag Spring Washer	1460	Clutch Plate	1880	Stabilizer Bar
0032	Bearing Retainer	1461	Yoke	1882	Spool
0042	Line Guide Pawl	1462	Clutch Cam Retainer	1883	Magnet Retainer
0191	Multi-Purpose Screw	1463	Clutch Cam	1884	Magnet Retainer Spring
0194	Ball Bearing	1464	Clutch Pawl	1885	Dial Case
0425	Drive Gear Retainer	1465	Clutch Pawl Spring	1886	Magnet Retainer Shaft
0664	Spacer (B)	1476	Drive Shaft Washer (D)	1887	Brake Cam
0766	Dial Friction Washer	1602	Key Washer	1890	Handle Assembly
0770	Handle Nut Plate Screw	1603	Drive Shaft Washer	1891	Star Drag
0797	Handle Nut	1604	Drive Shaft	1892	Cast Control Cap
0799	Friction Washer	1667	Worm Gear	1893	Right Side Plate
0810	Drag Washer	1668	Worm Shaft Washer (A)	1894	Level Wind Guard
0817	Multi-Purpose Screw	1670	Worm Bushing	1895	Thumb Rest
0819	Drive Shaft Bushing	1671	Worm Shaft Washer (B)	1896	Drive Shaft Cover
0820	Pinion Gear	1672	"E" Lock	1897	Line Guide
0830	Spacer (optional)	1676	Spool Tension Spacer (B)	1898	Pawl Cap
0835	Spool Shaft Bushing (B)	1677	Spool Tension Spacer (A)	1899	One-Piece Frame
1206	Roller Clutch Inner Tube	1678	Spool Tension Spring	1900	Quick-Fire II Clutch Bar
1207	Roller Clutch Bearing	1692	Handle Nut Plate	1901	Magnetic Control Dial
1419	Yoke Spring	1872	Worm Shaft	1902	Left Side Plate
1456	Drive Gear	1876	Thumb Rest Screw		
1458	Anti-Reverse Ratchet	1878	Pawl Cap Spacer		