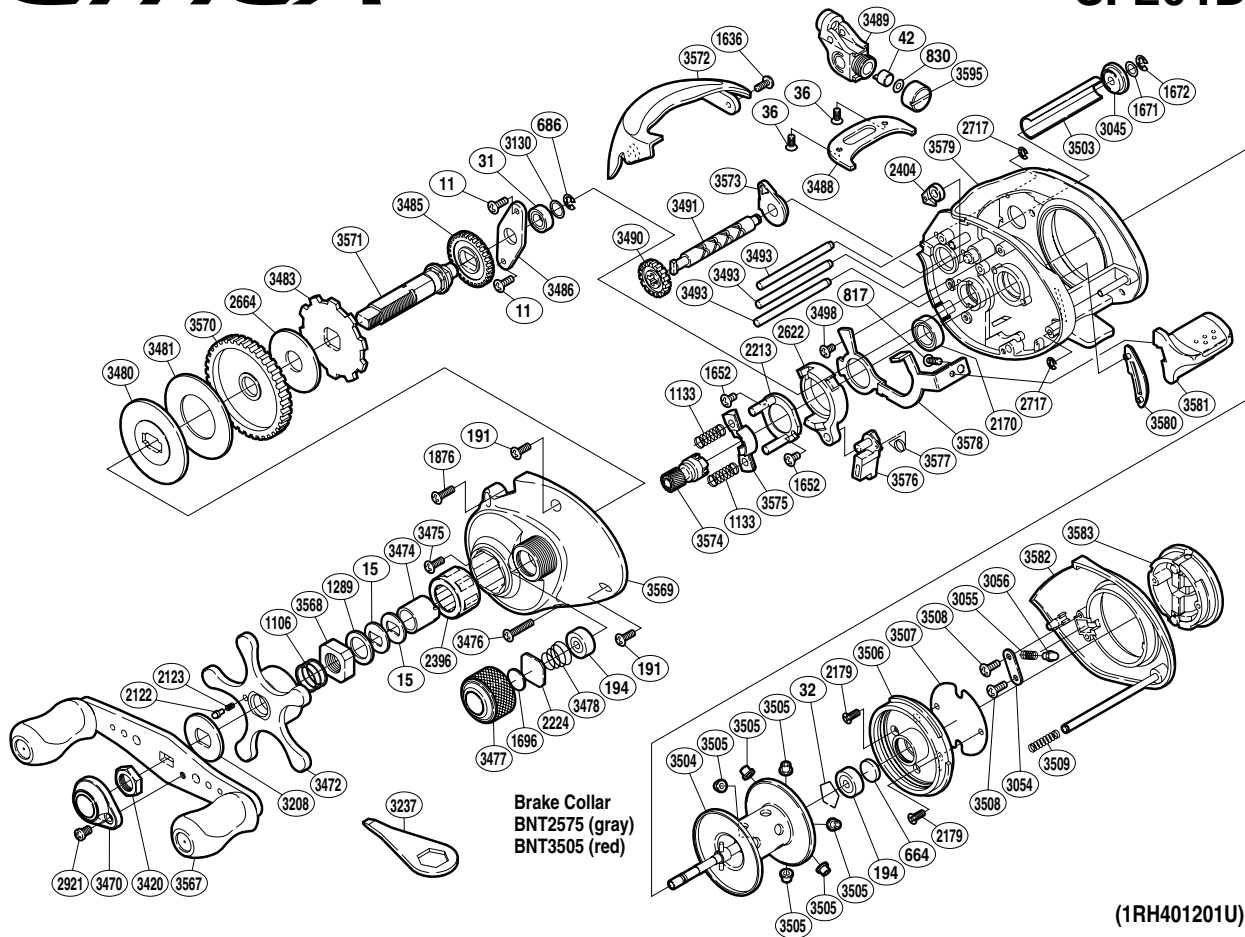


SHIMANO®

CITICA

CI-201D



| Part No. | Description | Part No. | Description | Part No. | Description |
|----------|-----------------------|----------|--------------------------|----------|---------------------------------|
| BNT0011 | Screw | BNT2622 | Clutch Cam | BNT3503 | Level Wind Guard |
| BNT0015 | Drag Spring Washer | BNT2664 | Drag Washer | BNT3504 | Spool Assembly |
| BNT0031 | Ball Bearing | BNT2717 | E Lock | BNT3505 | Brake Collar (Red) |
| BNT0032 | Bearing Retainer | BNT2921 | Screw | BNT3506 | Brake Case |
| BNT0036 | Screw | BNT3045 | Worm Bushing B | BNT3507 | Brake Case Spacer |
| BNT0042 | Line Guide Pawl | BNT3054 | Click Pin Retainer | BNT3508 | Screw |
| BNT0191 | Screw | BNT3055 | Click Spring | BNT3509 | Side Plate Spring |
| BNT0194 | Ball Bearing | BNT3056 | Click Pin | BNT3567 | Handle Assembly |
| BNT0664 | Spacer B | BNT3130 | Washer | BNT3568 | Star Drag Nut |
| BNT0686 | E Lock | BNT3208 | Star Drag Click Plate | BNT3569 | Left Side Plate |
| BNT0817 | Screw | BNT3420 | Handle Nut | BNT3570 | Drive Gear |
| BNT0830 | Spacer | BNT3470 | Handle Nut Plate | BNT3571 | Drive Shaft |
| BNT1106 | Star Drag Spring | BNT3472 | Star Drag | BNT3572 | Thumb Rest |
| BNT1133 | Yoke Spring | BNT3474 | Roller Clutch Inner Tube | BNT3573 | Worm Bushing A |
| BNT1289 | Star Drag Spacer | BNT3475 | Screw | BNT3574 | Pinion Gear |
| BNT1636 | Screw | BNT3476 | Screw | BNT3575 | Yoke |
| BNT1652 | Screw | BNT3477 | Cast Control Cap | BNT3576 | Clutch Pawl |
| BNT1671 | Washer | BNT3478 | Spool Tension Spring | BNT3577 | Clutch Pawl Spring |
| BNT1672 | E Lock | BNT3480 | Key Washer | BNT3578 | Clutch Plate |
| BNT1696 | Cast Control Spacer | BNT3481 | Drag Washer | BNT3579 | One-Piece Frame |
| BNT1876 | Screw | BNT3483 | Anti-Reverse Ratchet | BNT3580 | Clutch Bar Guide |
| BNT2122 | Click Pin | BNT3485 | Idle Gear A | BNT3581 | Quick-Fire II Clutch Bar |
| BNT2123 | Click Spring | BNT3486 | Drive Shaft Retainer | BNT3582 | Right Side Plate |
| BNT2170 | Ball Bearing | BNT3488 | Line Guard | BNT3583 | Turnkey Dial |
| BNT2179 | Screw | BNT3489 | Line Guide | BNT3595 | Pawl Cap |
| BNT2213 | Clutch Cam Retainer | BNT3490 | Idle Gear C | | |
| BNT2224 | Spool Tension Spacer | BNT3491 | Worm Shaft | | |
| BNT2396 | Roller Clutch Bearing | BNT3493 | Stabilizer Bar | BNT2575 | Brake Collar (gray) (accessory) |
| BNT2404 | Anti-Reverse Pawl | BNT3498 | Screw | BNT3237 | Wrench (accessory) |