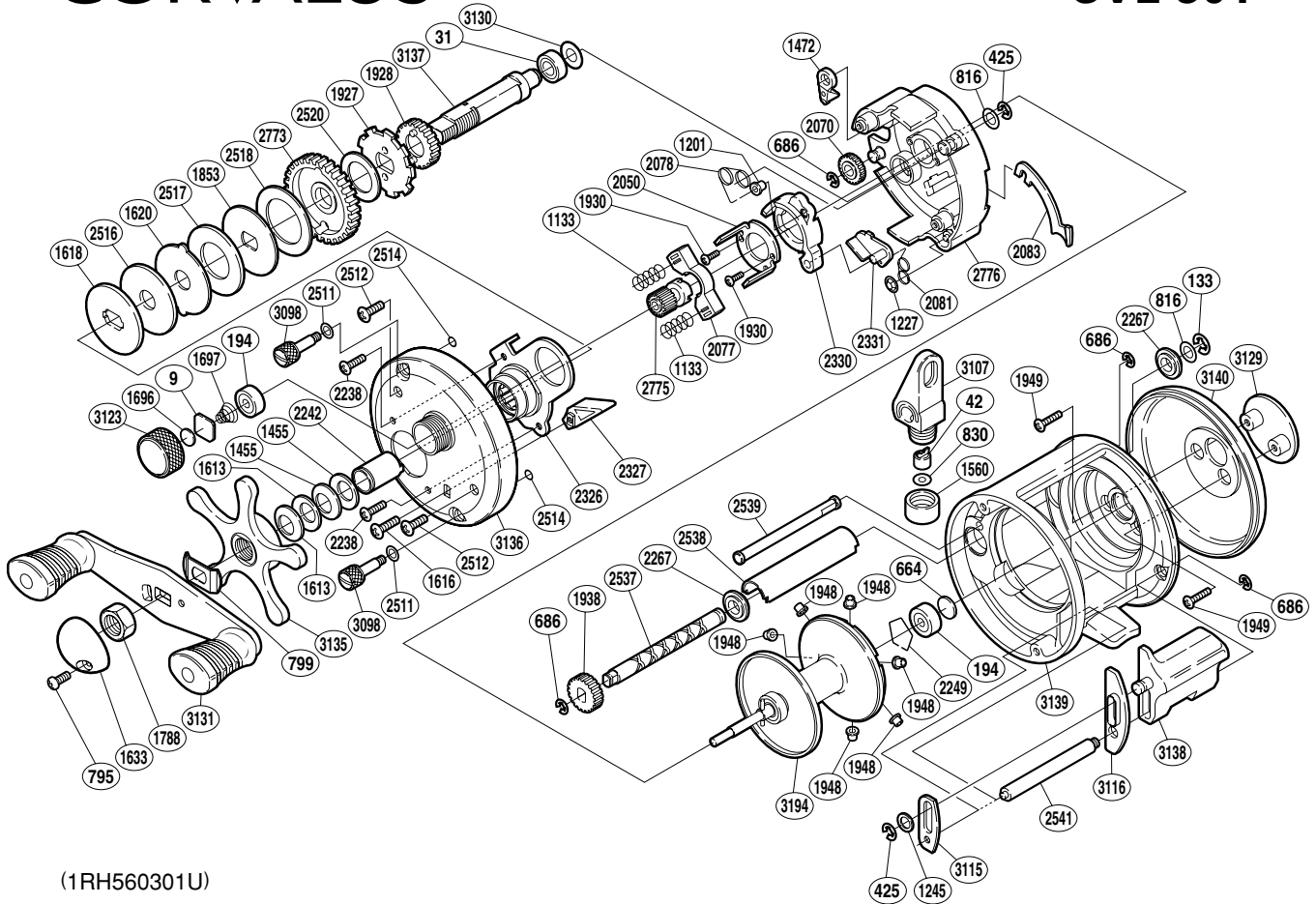


SHIMANO®

CORVALUS

CVL-301



(1RH560301U)

Part No.	Description	Part No.	Description	Part No.	PARTS NAMES
BNT0009	Spacer	BNT1788	Handle Nut	BNT2517	Drag Washer CG
BNT0031	Ball Bearing	BNT1853	Key Washer A	BNT2518	Drag Washer BG
BNT0042	Line Guide Pawl	BNT1927	Anti-Reverse Ratchet	BNT2520	Drive Shaft Washer B
BNT0133	E Lock	BNT1928	Idle Gear A	BNT2537	Worm Shaft
BNT0194	Ball Bearing	BNT1930	Screw	BNT2538	Level Wind Guard
BNT0425	E Lock	BNT1938	Idle Gear C	BNT2539	Stabilizer Bar
BNT0664	Spacer B	BNT1948	Brake Collar	BNT2541	Clutch Button Support Bar
BNT0686	E Lock	BNT1949	Screw	BNT2773	Drive Gear
BNT0795	Screw	BNT2050	Clutch Cam Retainer	BNT2775	Pinion Gear
BNT0799	Friction Washer	BNT2070	Idle Gear B	BNT2776	Set Plate
BNT0816	Washer	BNT2077	Yoke	BNT3098	Side Plate Nut
BNT0830	Spacer	BNT2078	Retractor Spring	BNT3107	Line Guide
BNT1133	Yoke Spring	BNT2081	Clutch Pawl Spring	BNT3115	Clutch Button Guide A
BNT1201	Retractor Spring Collar	BNT2083	Clutch Plate	BNT3116	Clutch Button Guide B
BNT1227	Push Nut (SPN-2)	BNT2238	Screw	BNT3123	Cast Control Cap
BNT1245	Spacer	BNT2242	Roller Clutch Inner Tube	BNT3129	Side I.D. Plate
BNT1455	Drag Spring Washer H	BNT2249	Bearing Retainer	BNT3130	Washer
BNT1472	Anti-Reverse Pawl	BNT2267	Worm Bushing B	BNT3131	Handle Assembly
BNT1560	Pawl Cap	BNT2326	Roller Clutch Assembly	BNT3135	Star Drag
BNT1613	Drag Spring Washer L	BNT2327	Return Pin Guide	BNT3136	Left Side Plate
BNT1616	Screw	BNT2330	Clutch Cam	BNT3137	Drive Shaft
BNT1618	Key Washer C	BNT2331	Clutch Pawl	BNT3138	Quick-Fire II Clutch Bar
BNT1620	Eared Washer	BNT2511	Washer	BNT3139	One-Piece Frame
BNT1663	Handle Nut Plate	BNT2512	Screw	BNT3140	Right Side Plate
BNT1696	Spacer	BNT2514	O Ring	BNT3194	Spool Assembly
BNT1697	Spool Tension Spring	BNT2516	Drag Washer AG		