

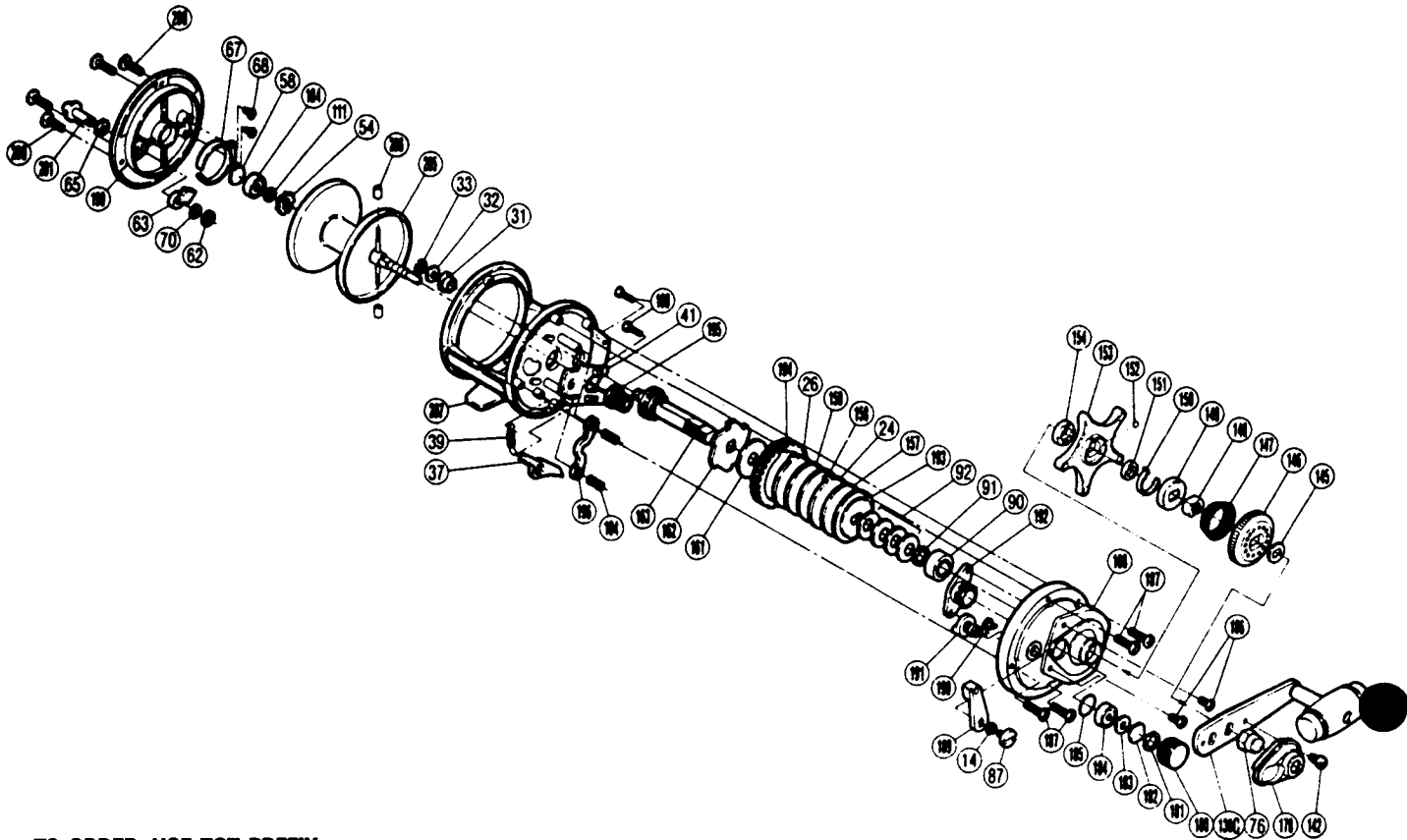
EXPLODED PARTS VIEW



SHIMANO®

1990 REPAIR MANUAL

Shimano American Corporation, One Shimano Dr.
Irvine, CA 92718



**TO ORDER: USE TGT PREFIX
WITH PART NUMBER**

PARTS LIST

TGT #	DESCRIPTION	TGT #	DESCRIPTION	TGT #	DESCRIPTION
0014	Lock Washer	0109	Right Side Plate Screw	0181	Drag Spring Washer
0024	Eared Washer "E"	0111	Click Gear Retainer	0182	Cast Control Spacer
0026	Eared Washer "B"	0130C	Handle Assembly	0183	Felt Washer
0031	Drive Shaft Bushing	0142	Handle Nut Plate Screw	0184	Ball Bearing
0032	Spacer	0145	Friction Washer	0185	O Ring
0033	Drive Shaft Retainer	0146	Pre-Set Dial	0186	Bushing Screw
0037	Anti-Reverse Pawl	0147	Pre-Set Spring	0187	Right Side Plate Screw [A]
0039	Anti-Reverse Pawl Spring	0148	Pre-Set Nut	0188	Right Side Plate
0041	Yoke Plate	0149	Strike	0189	Clutch Lever
0054	Click Gear	0150	Strike Spring	0190	Clutch Spring
0058	Spacer "B"	0151	Strike Spacer	0191	Clutch Cam
0062	Click Pawl Retainer	0152	Strike Ball	0192	Side Plate Bushing
0063	Click Pawl	0153	Star Drag	0193	Key Washer "F2"
0065	Spacer A	0154	Drive Shaft Cam	0194	Drive Gear
0067	Click Spring	0157	Drag Washer "G"	0195	Pinion Gear
0068	Click Spring Screw	0158	Drag Washer "I"	0196	Yoke
0070	Spacer B	0159	Key Washer "F"	0199	Left Side Plate
0076	Handle Nut	0161	Drive Shaft Washer	0200	Left Side Plate Screw
0087	Clutch Lever Screw	0162	Anti-Reverse Ratchet	0201	Click Button
0090	Ball Bearing	0163	Drive Shaft	0205	Spool
0091	Bearing Thrust Washer	0178	Handle Nut Plate	0206	Brake Collar
0092	Drag Spring Washers	0180	Cast Control Cap	0207	Frame
0104	Yoke Spring				

Prices and specifications subject to change without notice.

1/1990