

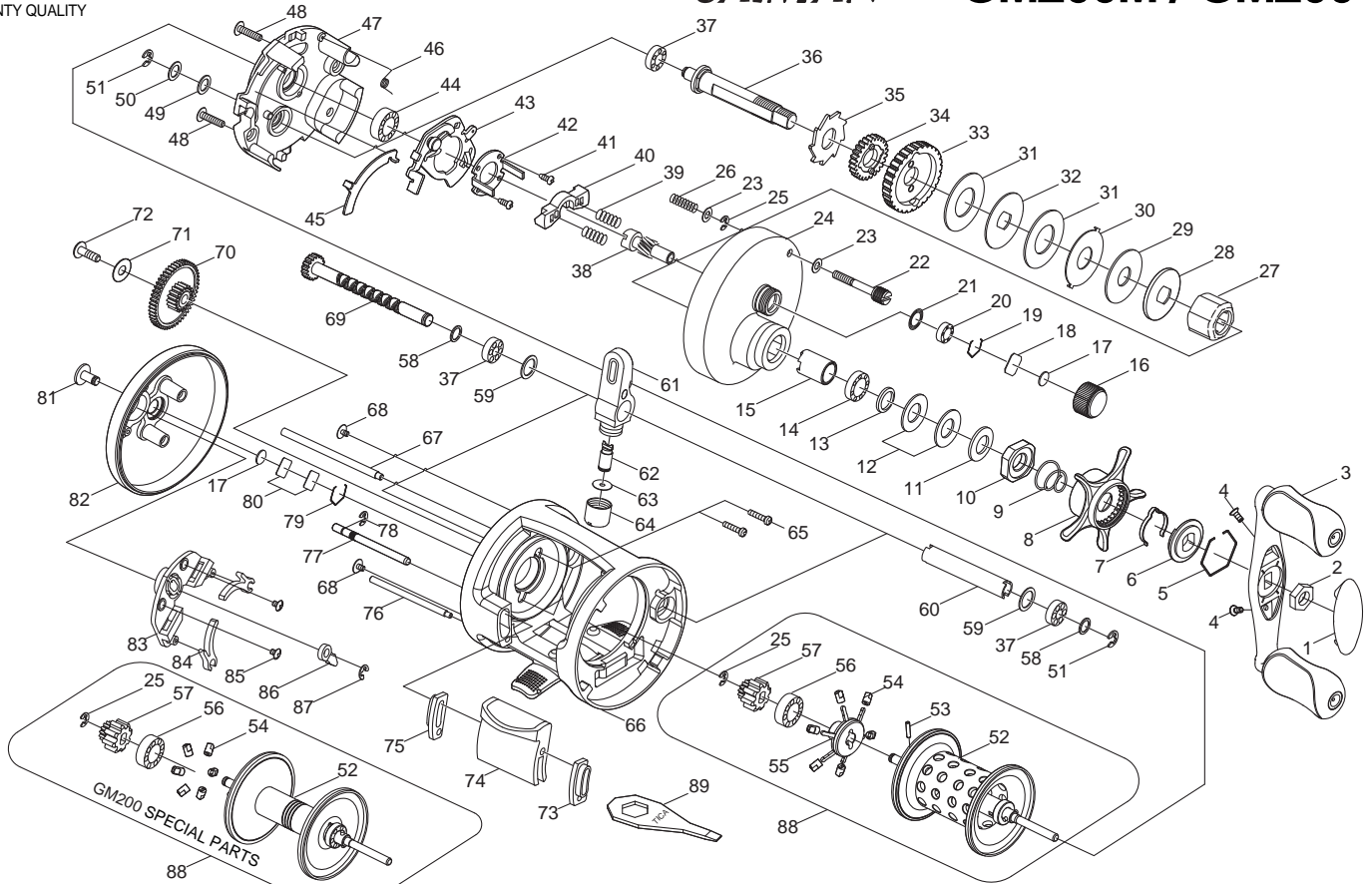


**BAIT CASTING REEL**

*CAIMAN*

**GM200M / GM200**

Please order by parts number, not key number  
 Bitte, Best.-Nr. angeben (Nicht "key" -nr.)  
 Veuillez indiquer le numero de la piece (Non "key" no.)



Key No.	Parts No.	Parts name	Key No.	Parts No.	Parts name
1	2F5-097-01	HANDLE NUT CAP	48	2E2-005-03	B26M-080 SCREW
2	2E3-016-01	NUT	49	2W1-054-01	052-080 WASHER
3	2YH-079-04	HANDLE TOTAL ASSEMBLY	50	2W1-070-01	052-080 WASHER
4	2E2-030-02	F20M-050 SCREW	51	2E5-013-01	E3.0 RETAINER
5	2E4-018-01	RETAINER	52	2YS-255-02	SPOOL ASSEMBLY
6	2F8-050-01	CLICK LEAF SPRING HOLDER	53	2E6-017-01	SPOOL SHAFT PIN
7	2L3-029-01	CLICK LEAF SPRING	54	2C2-057-01	BRAKE COLLAR
8	2D4-008-05	STAR DRAG LEVER	55	2YS-257-01	TIP OF SPOOL ASSEMBLY
9	2Q1-052-01	STAR DRAG SPRING	56	2Z1-023-01	814-4 BALL BEARING
10	2E3-029-01	STAR DRAG NUT	57	2F3-041-01	CLICK GEAR
11	2W1-020-01	081-130 WASHER	58	2W1-046-01	051-068 WASHER
12	2L1-004-01	SPRING WASHER	59	2W1-078-01	072-100 WASHER
13	2W1-035-05	080-105 WASHER	60	2C4-010-01	LEVEL WIND GUARD
14	2Z1-024-05	812-2.5 BALL BEARING	61	2YR-038-01	LINE GUIDE ASSEMBLY
15	2A4-022-01	ONE-WAY CLUTCH INNER TUBE	62	2M5-005-01	LINE GUIDE PIN
16	2E3-024-01	CAST CONTROL NUT	63	2W1-100-01	020-068 WASHER
17	2W5-026-01	SPACER	64	2E3-014-01	LINE GUIDE NUT
18	2W5-029-01	CAST CONTROL SPACER	65	2E2-034-01	A20M-090 SCREW
19	2E4-019-01	BEARING RETAINER	66	2YB-095-06	BODY ASSEMBLY
20	2Z1-001-05	508-2.5 BALL BEARING	67	2P4-006-03	LEVEL WIND GUIDE
21	2E9-005-01	O RING	68	2E2-003-01	B26M-036 SCREW
22	2E0-011-01	RIGHT SIDE COVER SCREW	69	2YM-042-01	WORM SHAFT ASSEMBLY
23	2W1-132-01	036-060 WASHER	70	2G3-015-01	IDLE GEAR
24	2YF-033-23	RIGHT SIDE COVER ASSEMBLY	71	2W1-166-02	031-102 WASHER
25	2E5-006-01	E2.5 RETAINER	72	2E2-007-01	B30M-100 SCREW
26	2Q1-056-01	RIGHT SIDE COVER SCREW SPRING	73	2C4-013-01	CASTING BAR GUIDE A
27	2YZ-007-01	ONE-WAY CLUTCH BEARING ASSEMBLY	74	2YS-085-01	CASTING BAR ASSEMBLY
28	2W2-032-01	KEY WASHER	75	2C4-014-01	CASTING BAR GUIDE B
29	2W1-126-01	082-210 WASHER	76	2P4-008-03	CASTING BAR SUPPORT
30	2W3-017-01	EARED WASHER	77	2P2-021-01	CASTING BAR PIN
31	2W1-111-01	100-230 WASHER	78	2E5-020-01	E1.5 RETAINER
32	2W2-025-01	KEY WASHER	79	2E4-011-01	BEARING RETAINER
33	2G1-027-01	DRIVE GEAR	80	2W5-015-01	CAST CONTROL SPACER
34	2YG-023-01	OSCILLATING GEAR ASSEMBLY	81	2F7-004-01	CLICK SWITCH
35	2A3-027-01	RATCHET	82	2F5-108-08	LEFT SIDE COVER
36	2M3-053-01	DRIVE SHAFT	83	2F6-032-01	CLICK PLATE
37	2Z1-018-05	510-3 BALL BEARING	84	2F2-020-01	CLICK SPRING
38	2G2-010-01	PINION GEAR	85	2E2-022-01	B20M-030 SCREW
39	2Q1-031-01	YOKE SPRING	86	2F4-018-01	CLICK PAWL
40	2A2-039-01	PINION YOKE	87	2E5-006-01	E2.5 RETAINER
41	2E2-047-01	A20M-065 SCREW	88	2YT-398-02	SPOOL TOTAL ASSEMBLY
42	2F8-030-01	CLUTCH CAM RETAINER	89	2X3-004-01	WRENCH
43	2YA-035-01	CLUTCH CAM ASSEMBLY	GM200	SPECIAL PARTS	
44	2Z1-010-05	812-3.5 BALL BEARING	24	2YF-033-20	RIGHT SIDE COVER ASSEMBLY
45	2M2-003-01	CLUTCH PLATE	52	2YS-083-01	SPOOL ASSEMBLY
46	2Q3-086-01	RETRACTOR SPRING	88	2YT-143-01	SPOOL TOTAL ASSEMBLY
47	2F8-039-01	GEAR SETTING PLATE			