

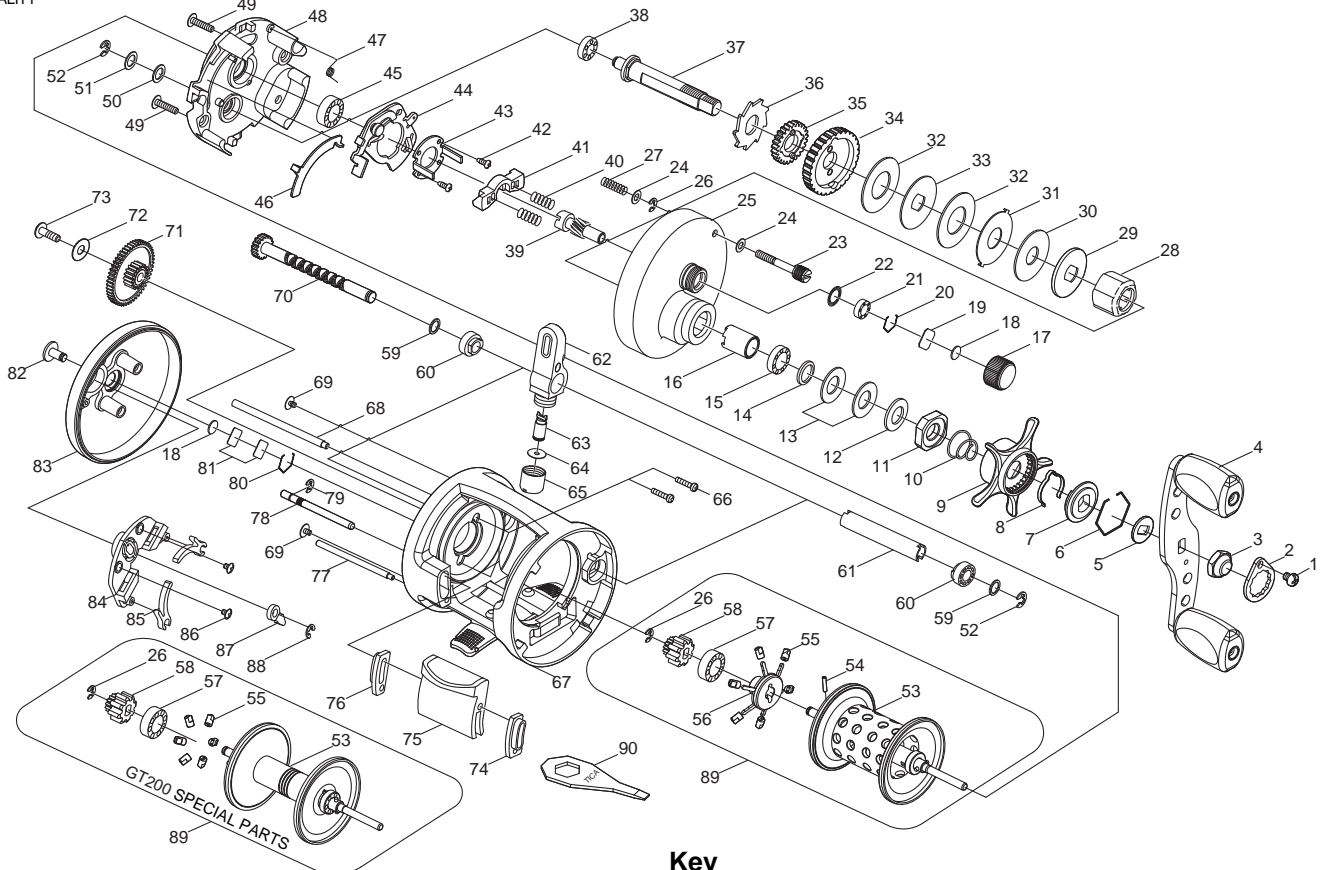


BAIT CASTING REEL

CAIMAN

GT200M / GT200

Please order by parts number, not key number
 Bitte, Best.-Nr. angeben (Nicht "key" -nr.)
 Veuillez indiquer le numero de la piece (Non "key" no.)



Key No.

Key No.	Parts No.	Parts name
1	2E2-089-01	A26M-045 SCREW
2	2F6-043-02	ROTOR NUT HOLDING PLATE
3	2E3-075-01	HANDLE NUT
4	2YH-331-01	SPOOL TOTAL ASSEMBLY
5	2W2-058-01	KEY WASH
6	2E4-018-01	RETAINER
7	2F8-050-01	CLICK LEAF SPRING HOLDER
8	2L3-029-01	CLICK LEAF SPRING
9	2D4-008-02	STAR DRAG LEVER
10	2Q1-052-01	STAR DRAG SPRING
11	2E3-029-01	STAR DRAG NUT
12	2W1-020-01	081-130 WASHER
13	2L1-004-01	SPRING WASHER
14	2W1-035-05	080-105 WASHER
15	2Z1-024-05	812-2.5 BALL BEARING
16	2A4-022-01	ONE-WAY CLUTCH INNER TUBE
17	2E3-024-01	CAST CONTROL NUT
18	2W5-026-01	SPACER
19	2W5-029-01	CAST CONTROL SPACER
20	2E4-019-01	BEARING RETAINER
21	2Z1-001-05	508-2.5 BALL BEARING
22	2E9-005-01	O RING
23	2E0-011-01	RIGHT SIDE COVER SCREW
24	2W1-132-01	036-060 WASHER
25	2YF-033-24	RIGHT SIDE COVER ASSEMBLY
26	2E5-006-01	E2.5 RETAINER
27	2Q1-056-01	RIGHT SIDE COVER SCREW SPRING
28	2YZ-007-01	ONE-WAY CLUTCH BEARING ASSEMBLY
29	2W2-032-01	KEY WASHER
30	2W1-126-01	082-210 WASHER
31	2W3-017-01	EARED WASHER
32	2W1-111-01	100-230 WASHER
33	2W2-025-01	KEY WASHER
34	2G1-027-01	DRIVE GEAR
35	2YG-023-01	OSCILLATING GEAR ASSEMBLY
36	2A3-027-01	RATCHET
37	2M3-053-01	DRIVE SHAFT
38	2Z1-018-05	510-3 BALL BEARING
39	2G2-010-01	PINION GEAR
40	2Q1-031-01	YOKE SPRING
41	2A2-039-01	PINION YOKE
42	2E2-047-01	A20M-065 SCREW
43	2F8-030-01	CLUTCH CAM RETAINER
44	2YA-035-01	CLUTCH CAM ASSEMBLY
45	2Z1-010-05	812-3.5 BALL BEARING
46	2M2-003-01	CLUTCH PLATE
47	2Q3-086-01	RETRACTOR SPRING

Key No.

Key No.	Parts No.	Parts name
48	2F8-039-01	GEAR SETTING PLATE
49	2E2-005-03	B26M-080 SCREW
50	2W1-054-01	052-080 WASHER
51	2W1-070-01	052-080 WASHER
52	2E5-013-01	E3.0 RETAINER
53	2YS-255-02	SPOOL ASSEMBLY
54	2E6-017-01	SPOOL SHAFT PIN
55	2C2-057-01	BRAKE COLLAR
56	2YS-257-01	TIP OF SPOOL ASSEMBLY
57	2Z1-023-01	814-4 BALL BEARING
58	2F3-041-01	CLICK GEAR
59	2W1-046-01	051-068 WASHER
60	2C2-042-01	WORM SHAFT BUSH
61	2C4-010-01	LEVEL WIND GUARD
62	2YR-038-01	LINE GUIDE ASSEMBLY
63	2M5-005-01	LINE GUIDE PIN
64	2W1-100-01	020-068 WASHER
65	2E3-014-01	LINE GUIDE NUT
66	2E2-034-01	A20M-090 SCREW
67	2YB-095-02	BODY ASSEMBLY
68	2P4-006-03	LEVEL WIND GUIDE
69	2E2-003-01	B26M-036 SCREW
70	2YM-042-01	WORM SHAFT ASSEMBLY
71	2G3-015-01	IDLE GEAR
72	2W1-166-02	031-102 WASHER
73	2E2-007-01	B30M-100 SCREW
74	2C4-013-01	CASTING BAR GUIDE A
75	2YS-085-01	CASTING BAR ASSEMBLY
76	2C4-014-01	CASTING BAR GUIDE B
77	2P4-008-03	CASTING BAR SUPPORT
78	2P2-021-01	CASTING BAR PIN
79	2E5-020-01	E1.5 RETAINER
80	2E4-011-01	BEARING RETAINER
81	2W5-015-01	CAST CONTROL SPACER
82	2F7-004-01	CLICK SWITCH
83	2F5-108-02	LEFT SIDE COVER
84	2F6-032-01	CLICK PLATE
85	2F2-020-01	CLICK SPRING
86	2E2-022-01	B20M-030 SCREW
87	2F4-018-01	CLICK PAWL
88	2E5-006-01	E2.5 RETAINER
89	2YT-398-02	SPOOL TOTAL ASSEMBLY
90	2X3-004-02	WRENCH
GT200 SPECIAL PARTS		
25	2YF-033-21	RIGHT SIDE COVER ASSEMBLY
53	2YS-083-01	SPOOL ASSEMBLY
89	2YT-143-01	SPOOL TOTAL ASSEMBLY