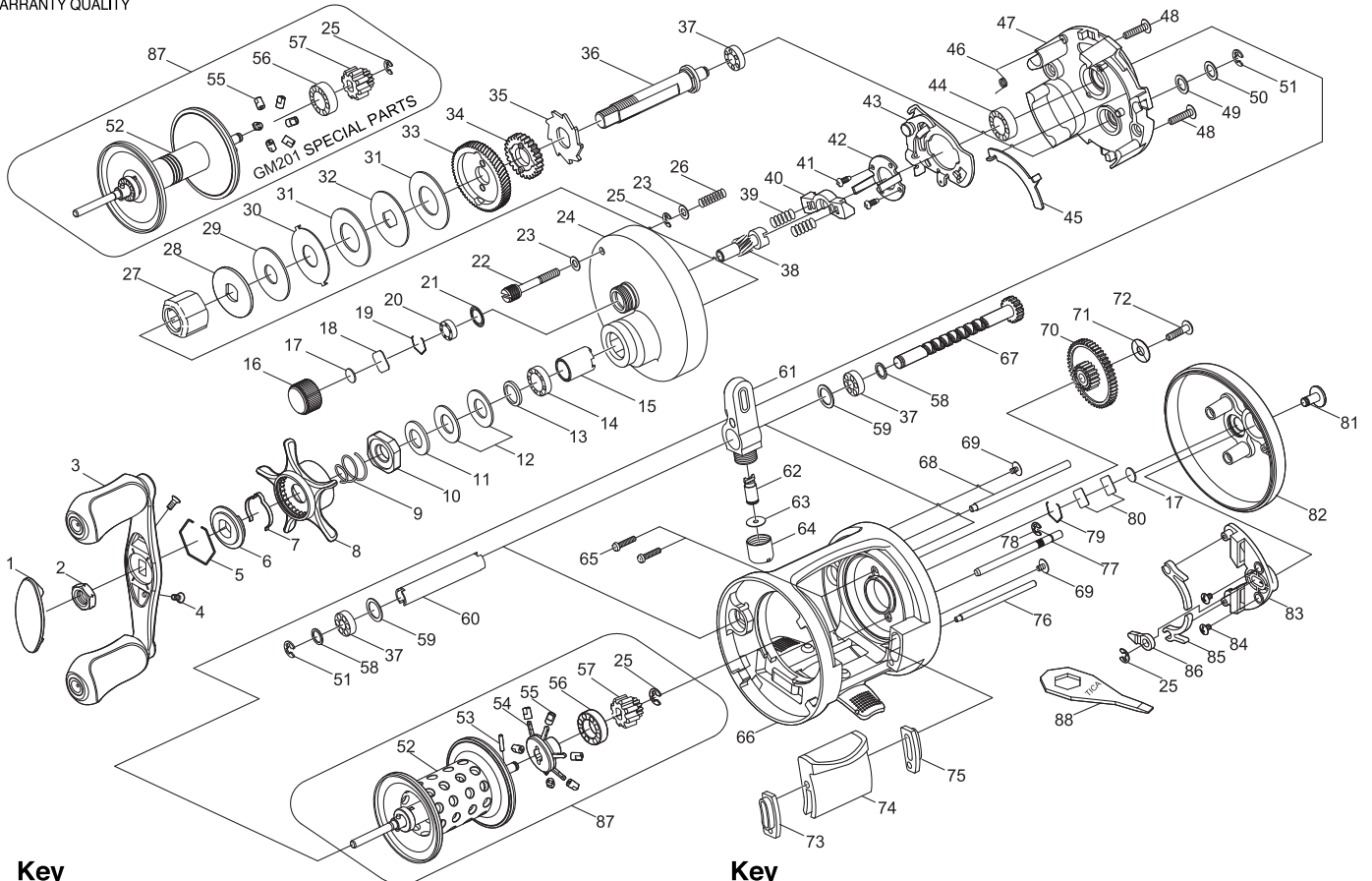




# BAIT CASTING REEL

# CAIMAN

# GM201M / GM201



**Key No.**

**Parts No.**

**Parts name**

1	2F5-097-01	HANDLE NUT CAP
2	2E3-016-02	NUT
3	2YH-079-04	HANDLE TOTAL ASSEMBLY
4	2E2-030-02	F20M-050 SCREW
5	2E4-018-01	RETAINER
6	2F8-050-01	CLICK LEAF SPRING HOLDER
7	2L3-029-01	CLICK LEAF SPRING
8	2D4-008-05	STAR DRAG LEVER
9	2Q1-052-01	STAR DRAG SPRING
10	2E3-029-02	STAR DRAG NUT
11	2W1-020-01	081-130 WASHER
12	2L1-004-01	SPRING WASHER
13	2W1-035-05	080-105 WASHER
14	2Z1-024-05	812-2.5 BALL BEARING
15	2A4-022-01	ONE-WAY CLUTCH INNER TUBE
16	2E3-024-01	CAST CONTROL NUT
17	2W5-026-01	SPACER
18	2W5-029-01	CAST CONTROL SPACER
19	2E4-019-01	BEARING RETAINER
20	2Z1-001-05	508-2.5 BALL BEARING
21	2E9-005-01	O RING
22	2E0-011-01	RIGHT SIDE COVER SCREW
23	2W1-132-01	036-060 WASHER
24	2YF-046-18	LEFT SIDE COVER ASSEMBLY
25	2E5-006-01	E2.5 RETAINER
26	2Q1-056-01	RIGHT SIDE COVER SCREW SPRING
27	2YZ-007-01	ONE-WAY CLUTCH BEARING ASSEMBLY
28	2W2-032-01	KEY WASHER
29	2W1-126-01	082-210 WASHER
30	2W3-017-01	EARED WASHER
31	2W1-111-01	100-230 WASHER
32	2W2-025-01	KEY WASHER
33	2G1-032-01	DRIVE GEAR
34	2YG-023-01	OSCILLATING GEAR ASSEMBLY
35	2A3-027-01	RATCHET
36	2M3-053-02	DRIVE SHAFT
37	2Z1-018-05	510-3 BALL BEARING
38	2G2-046-01	PINION GEAR
39	2Q1-031-01	YOKE SPRING
40	2A2-050-01	PINION YOKE
41	2E2-047-01	A20M-065 SCREW
42	2F8-030-01	CLUTCH CAM RETAINER
43	2YA-019-01	CLUTCH CAM ASSEMBLY
44	2Z1-010-05	812-3.5 BALL BEARING
45	2M2-004-01	CLUTCH PLATE
46	2Q3-089-01	RETRACTOR SPRING

**Key No.**

**Parts No.**

**Parts name**

47	2F8-029-01	GEAR SETTING PLATE
48	2E2-005-03	B26M-080 SCREW
49	2W1-054-01	052-080 WASHER
50	2W1-070-01	052-080 WASHER
51	2E5-013-01	E3.0 RETAINER
52	2E6-017-01	SPOOL SHAFT PIN
53	2YS-255-02	SPOOL ASSEMBLY
54	2YS-257-01	TIP OF SPOOL ASSEMBLY
55	2C2-057-01	BRAKE COLLAR
56	2Z1-023-01	814-4 BALL BEARING
57	2F3-041-01	CLICK GEAR
58	2W1-046-01	051-068 WASHER
59	2W1-078-01	072-100 WASHER
60	2C4-010-01	LEVEL WIND GUARD
61	2YR-038-01	LINE GUIDE ASSEMBLY
62	2M5-005-01	LINE GUIDE PIN
63	2W1-100-01	020-068 WASHER
64	2E3-014-01	LINE GUIDE NUT
65	2E2-034-01	A20M-090 SCREW
66	2YB-094-06	BODY ASSEMBLY
67	2YM-042-01	WORM SHAFT ASSEMBLY
68	2P4-006-03	LEVEL WIND GUIDE
69	2E2-003-01	B26M-036 SCREW
70	2G3-015-01	IDLE GEAR
71	2W1-166-02	031-102 WASHER
72	2E2-007-01	B30M-100 SCREW
73	2C4-013-01	CASTING BAR GUIDE A
74	2YS-085-01	CASTING BAR ASSEMBLY
75	2C4-014-01	CASTING BAR GUIDE B
76	2P4-008-03	CASTING BAR SUPPORT
77	2P2-021-01	CASTING BAR PIN
78	2E5-020-01	E1.5 RETAINER
79	2E4-011-01	BEARING RETAINER
80	2W5-015-01	CAST CONTROL SPACER
81	2F7-004-01	CLICK SWITCH
82	2F5-085-06	RIGHT SIDE COVER
83	2F6-032-01	CLICK PLATE
84	2E2-022-01	B20M-030 SCREW
85	2F2-020-01	CLICK SPRING
86	2F4-018-01	CLICK PAWL
87	2YT-398-02	SPOOL TOTAL ASSEMBLY
88	2X3-004-01	WRENCH
GM201	SPECIAL PARTS	
24	2YF-046-15	LEFT SIDE COVER ASSEMBLY
53	2YS-083-01	SPOOL ASSEMBLY
87	2YT-143-01	SPOOL TOTAL ASSEMBLY