

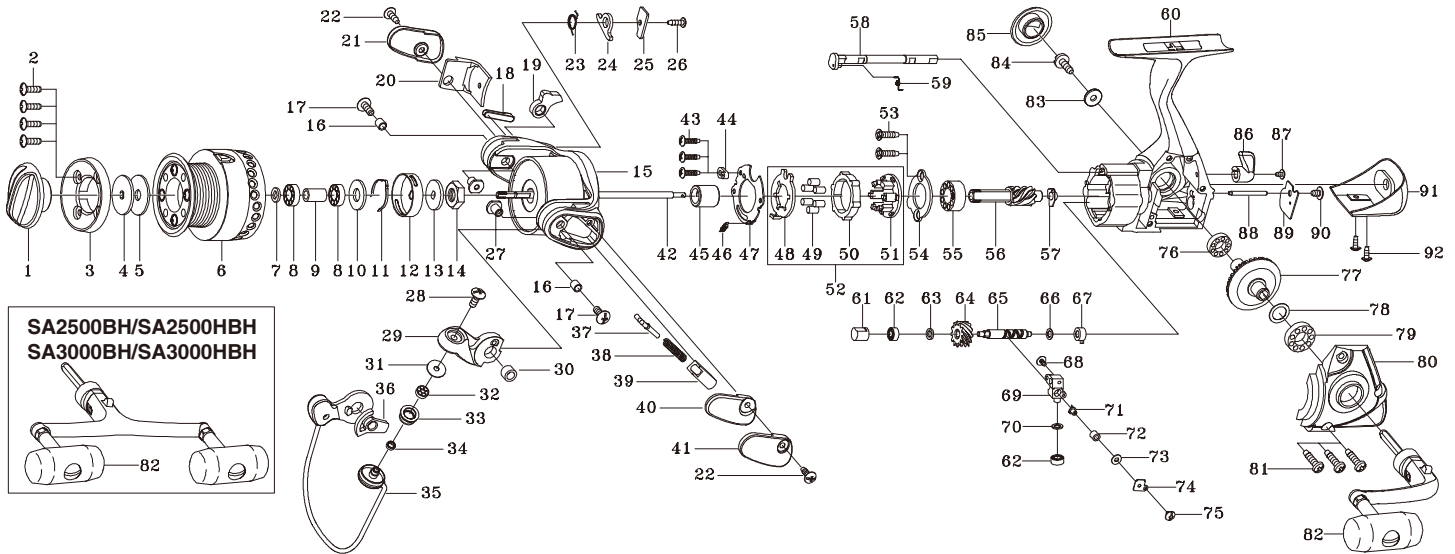


Please order by parts number, not key number
 Bitte, Best.-Nr. angeben (Nicht "key" -nr.)
 Veuillez indiquer le numero de la piece (Non "key" no.)

SPINNING REEL

SA2500 / SA2500BH / SA2500H / SA2500HBH

SA3000 / SA3000BH / SA3000H / SA3000HBH



Key NO.	Parts No.	Parts name	Key NO.	Parts No.	Parts name	Key NO.	Parts No.	Parts name
2-6	2YT-112-01	SPOOL TOTAL ASSEMBLY	50	2A3-008-01	ANTI-REVERSE RATCHET	77	2G1-056-01	DRIVE GEAR
1	2YD-024-01	DRAG KNOB ASSEMBLY	51	2F8-078-01	CAGE	SA2500HBH	SPECIAL PARTS	
2	2E2-005-03	B26M-080 SCREW	52	2YZ-014-01	ONE-WAY CLUTCH BEARING ASSEMBLY	2-6	2YT-112-05	SPOOL TOTAL ASSEMBLY
3	2S5-002-01	LIP COVER	53	2E1-067-01	F26-090 SCREW	6	2YS-051-05	SPOOL ASSEMBLY
4	2W2-013-01	KEY WASHER	54	2F5-193-01	BEARING RETAINER	56	2G2-073-01	PINION GEAR
5	2W1-052-01	050-187 WASHER	55	2Z1-003-02	714-5 BALL BEARING	64	2G3-047-01	OSCILLATING GEAR
6	2YS-051-01	SPOOL ASSEMBLY	56	2G2-036-01	PINION GEAR	77	2G1-056-01	DRIVE GEAR
7	2W2-016-01	KEY WASHER	57	2C2-033-01	PINION GEAR BUSH	82	2YH-068-01	HANDLE TOTAL ASSEMBLY
8	2Z1-013-01	610-3 BALL BEARING	58	2A2-009-01	ANTI-REVERSE CAM	SA3000	SPECIAL PARTS	
9	2C1-037-01	BEARING SPACER	59	2Q3-009-01	ANTI-REVERSE SPRING	2-6	2YT-117-01	SPOOL TOTAL ASSEMBLY
10	2W1-053-01	080-185 WASHER	60	2YB-130-01	BODY ASSEMBLY	6	2YS-055-01	SPOOL ASSEMBLY
11	2L3-014-01	CLICK LEAF SPRING	61	2C2-036-01	WORM SHAFT BUSH	15	2YR-058-01	ROTOR ASSEMBLY
12	2F8-013-01	CLICK LEAF SPRING HOLDER	62	2Z1-014-01	306-2.5 BALL BEARING	20	2R4-108-01	BAIL TRIP COVER SPACER
13	2W2-015-01	KEY WASHER	63	2W1-058-01	030-050 WASHER	24	2R5-105-01	BAIL TRIP LEVER
14	2E3-007-02	ROTOR NUT	64	2G3-012-01	WORM SHAFT GEAR	35	2YL-094-01	BAIL ASSEMBLY
15	2YR-057-01	ROTOR ASSEMBLY	65	2M4-001-01	WORM SHAFT	60	2YB-130-02	BODY ASSEMBLY
16	2C1-069-01	COLLAR SPACER	66	2W1-058-02	030-050 WASHER	SA3000BH	SPECIAL PARTS	
17	2E2-018-01	B30M-080 SCREW	67	2C2-035-01	WORM SHAFT BUSH A	2-6	2YT-117-01	SPOOL TOTAL ASSEMBLY
18	2R5-102-01	BAIL TRIP PLATE	68	2E2-013-02	B20M-060 SCREW	6	2YS-055-01	SPOOL ASSEMBLY
19	2R5-104-01	BAIL TRIP LEVER A	69	2M1-023-01	OSCILLATING SLIDER	15	2YR-058-01	ROTOR ASSEMBLY
20	2R4-107-01	BAIL TRIP COVER SPACER	70	2W1-058-03	030-050 WASHER	20	2R4-108-01	BAIL TRIP COVER SPACER
21	2F5-207-01	BAIL TRIP COVER	71	2M5-001-01	LINE GUIDE PIN	24	2R5-105-01	BAIL TRIP LEVER
22	2E1-016-03	B26-080 SCREW	72	2C2-034-01	LINE GUIDE PIN BUSH	35	2YL-094-01	BAIL ASSEMBLY
23	2Q3-056-01	BAIL TRIP LEVER SPRING	73	2W1-059-01	020-049 WASHER	60	2YB-130-02	BODY ASSEMBLY
24	2R5-103-01	BAIL TRIP LEVER	74	2F5-048-01	OSCILLATING SLIDER COVER	82	2YH-068-01	HANDLE TOTAL ASSEMBLY
25	2W5-037-01	SPACER	75	2E2-022-01	B20M-030 SCREW	SA3000H	SPECIAL PARTS	
26	2E1-048-02	B22-080 SCREW	76	2Z1-009-01	711-3 BALL BEARING	2-6	2YT-117-05	SPOOL TOTAL ASSEMBLY
27	2E3-040-01	SHAFT NUT	77	2G1-003-01	DRIVE GEAR	6	2YS-055-05	SPOOL ASSEMBLY
28	2E2-018-02	B30M-080 SCREW	78	2W1-019-00	071-103 WASHER	15	2YR-058-01	ROTOR ASSEMBLY
29	2R2-035-01	BAIL ARM	79	2Z1-002-01	714-3.5 BALL BEARING	20	2R4-108-01	BAIL TRIP COVER SPACER
30	2C2-082-01	BAIL ARM BUSH	80	2B2-024-01	BODY COVER	24	2R5-105-01	BAIL TRIP LEVER
31	2C1-034-01	LINE ROLLER COLLAR	81	2E1-005-03	A26-120 SCREW	35	2YL-094-01	BAIL ASSEMBLY
32	2Z1-012-02	407-2.5 BALL BEARING	82	2YH-060-01	HANDLE TOTAL ASSEMBLY	56	2G2-073-01	PINION GEAR
33	2R6-020-01	LINE ROLLER	83	2W1-004-01	029-080 WASHER	60	2YB-130-02	BODY ASSEMBLY
34	2C2-032-01	LINE ROLLER BUSH	84	2E2-023-01	a30M-120 SCREW	64	2G3-047-01	OSCILLATING GEAR
35	2YL-093-01	BAIL ASSEMBLY	85	2H6-010-01	HANDLE SCREW CAP	77	2G1-056-01	DRIVE GEAR
36	2F6-033-01	HOLDING PLATE	86	2A1-022-01	ANTI-REVERSE LEVER	SA3000HBH	SPECIAL PARTS	
37	2R5-101-01	BAIL TRIP SHAFT	87	2E2-013-03	B20M-060 SCREW	2-6	2YT-117-05	SPOOL TOTAL ASSEMBLY
38	2Q1-075-01	BAIL SPRING	88	2P1-015-01	OSCILLATING SLIDER PIN	6	2YS-055-05	SPOOL ASSEMBLY
39	2C2-081-01	BAIL SPRING GUIDE	89	2F5-049-01	WORM SHAFT COVER	15	2YR-058-01	ROTOR ASSEMBLY
40	2R4-106-01	BAIL SPRING COVER SPACER	90	2E1-036-01	B26-040 SCREW	20	2R4-108-01	BAIL TRIP COVER SPACER
41	2F5-206-01	BAIL SPRING COVER	91	2YN-003-01	NAMEPLATE ASSEMBLY	24	2R5-105-01	BAIL TRIP LEVER
42	2M3-028-01	MAIN SHAFT	92	2E1-020-01	B22-055 SCREW	35	2YL-094-01	BAIL ASSEMBLY
43	2E1-029-01	B22-090 SCREW	SA2500BH	SPECIAL PARTS	56	2G2-073-01	PINION GEAR	
44	2F8-079-01	ANTI-REVERSE SPRING ANCHOR	82	2YH-068-01	HANDLE TOTAL ASSEMBLY	60	2YB-130-02	BODY ASSEMBLY
45	2A4-021-01	ONE-WAY CLUTCH INNER TUBE	SA2500H	SPECIAL PARTS	64	2G3-047-01	OSCILLATING GEAR	
46	2Q2-016-01	SPRING	2-6	2YT-112-05	SPOOL TOTAL ASSEMBLY	77	2G1-056-01	DRIVE GEAR
47	2F5-192-01	ROLLER CLUTCH RETAINER	6	2YS-051-05	SPOOL ASSEMBLY	82	2YH-068-01	HANDLE TOTAL ASSEMBLY
48	2F2-028-01	ANTI-REVERSE PAWL	56	2G2-073-01	PINION GEAR			
49	2Z3-001-01	ROLLER	64	2G3-047-01	OSCILLATING GEAR			