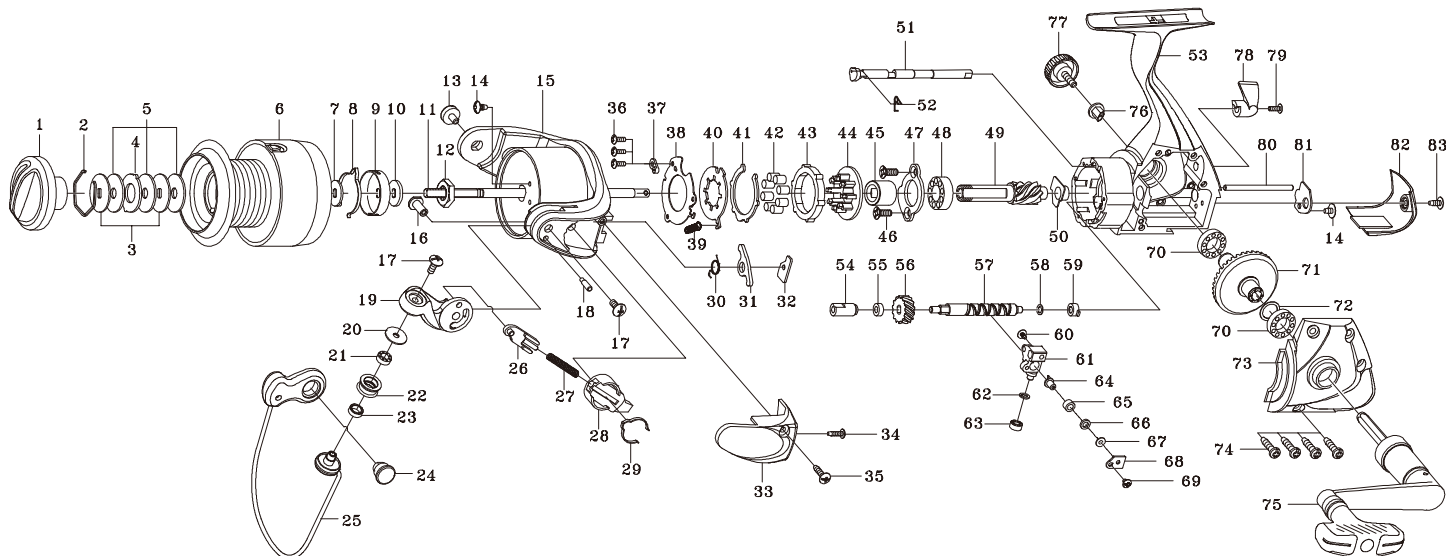




SPINNING REEL

GR4000/GR4500/GR4000H/GR4500H

Please order by parts number, not key number
 Bitte, Best.-Nr. angeben (Nicht "key" -nr.)
 Veuillez indiquer le numero de la pièce (Non "key" no.)



Key NO.	Parts No.	Parts name	Key NO.	Parts No.	Parts name
2-6	2YT-123-03	SPOOL ASSEMBLY	54	2C2-049-01	WORM SHAFT BUSH C
1	2YD-030-01	DRAG KNOB ASSEMBLY	55	2C1-048-01	WORM SHAFT COLLAR
2	2E4-009-01	DRAG WASHER RETAINER	56	2G3-018-01	WORM SHAFT GEAR
3	2W2-005-01	KEY WASHER	57	2M4-008-01	WORM SHAFT
4	2W3-003-01	EARED WASHER	58	2W1-058-02	030-050 WASHER
5	2W1-052-01	050-187 WASHER	59	2C2-035-01	WORM SHAFT BUSH A
6	2YS-062-03	SPOOL ASSEMBLY	60	2E2-009-01	F23M-060 SCREW
7	2W2-023-01	KEY WASHER	61	2M1-024-01	OSCILLATING SLIDER
8	2L3-018-01	SPOOL CLICK LEAF SPRING	62	2W1-058-03	030-050 WASHER
9	2F8-027-01	CLICK LEAF SPRING HOLDER	63	2Z1-014-01	306-2.5 BALL BEARING
10	2W2-024-01	KEY WASHER	64	2M5-004-01	LINE GUIDE PIN
11	2M3-039-01	MAIN SHAFT	65	2C2-034-01	LINE GUIDE PIN BUSH
12	2E3-002-01	ROTOR NUT	66	2W1-107-02	030-050 WASHER
13	2E0-008-01	BAIL HOLDER SCREW	67	2W1-059-01	020-049 WASHER
14	2E1-028-01	B26-050 SCREW	68	2F5-083-01	OSCILLATING SLIDER COVER
15	2R1-091-01	ROTOR	69	2E2-022-01	B20M-030 SCREW
16	2E3-040-02	SHAFT NUT	70	2Z1-004-01	814-3.5 BALL BEARING
17	2E2-018-01	B30M-080 SCREW	71	2G1-025-01	DRIVE GEAR
18	2P1-032-01	BAIL ARM PIN	72	2W1-035-00	080-105 WASHER
19	2R2-037-01	BAIL ARM	73	2YC-084-01	BODY COVER ASSEMBLY
20	2C1-034-01	LINE ROLLER COLLAR	74	2E1-006-02	A30-130 SCREW
21	2Z1-012-02	407-2.5 BALL BEARING	75	2YH-095-01	HANDLE ASSEMBLY
22	2R6-020-02	LINE ROLLER	76	2C3-023-01	HANDLE SCREW SLEEVE
23	2C2-032-01	LINE ROLLER BUSH	77	2H6-001-06	HANDLE SCREW CAP
24	2E3-019-01	BAIL HOLDER NUT	78	2A1-025-01	ANTI-REVERSE LEVER
25	2YL-099-01	BAIL ASSEMBLY	79	2E2-013-02	B20M-060 SCREW
26	2R5-109-01	BAIL TRIP SHAFT	80	2P1-024-01	OSCILLATING SLIDER PIN
27	2Q1-023-01	BAIL SPRING	81	2F5-078-01	WORM SHAFT COVER
28	2C2-084-01	BAIL SPRING GUIDE	82	2F5-080-01	REAR COVER
29	2L3-029-01	CLICK LEAF SPRING	83	2E1-016-02	B26-080 SCREW
30	2Q3-056-01	BAIL TRIP LEVER SPRING	GR4500	SPECIAL PARTS	
31	2R5-112-01	BAIL TRIP LEVER	2-6	2YT-125-03	SPOOL ASSEMBLY
32	2W5-037-01	SPACER	6	2YS-064-03	SPOOL ASSEMBLY
33	2R4-113-01	BAIL SPRING COVER	15	2R1-092-01	ROTOR
34	2E1-048-01	B22-080 SCREW	25	2YL-100-01	BAIL ASSEMBLY
35	2E1-046-01	B26-110 SCREW	31	2R5-113-01	BAIL TRIP LEVER
36	2E1-029-01	B22-090 SCREW	33	2R4-114-01	BAIL SPRING COVER
37	2F8-079-01	ANTI-REVERSE SPRING ANCHOR	GR4000H	SPECIAL PARTS	
38	2F5-189-01	ROLLER CLUTCH RETAINER	2-6	2YT-123-05	SPOOL ASSEMBLY
39	2Q2-016-01	SPRING	6	2YS-062-05	SPOOL ASSEMBLY
40	2F2-027-01	ANTI-REVERSE PAWL	49	2G2-054-01	PINION GEAR
41	2W5-036-01	WASHER	56	2G3-031-01	WORM SHAFT GEAR
42	2Z3-003-01	ROLLER	71	2G1-041-01	DRIVE GEAR
43	2A3-025-01	ANTI-REVERSE RATCHET	GR4500H	SPECIAL PARTS	
44	2F8-082-01	CAGE	2-6	2YT-125-04	SPOOL ASSEMBLY
45	2A4-026-01	ONE-WAY CLUTCH INNER TUBE	6	2YS-064-04	SPOOL ASSEMBLY
46	2E1-068-01	F30-100 SCREW	15	2R1-092-01	ROTOR
47	2F5-203-01	BEARING RETAINER	25	2YL-100-01	BAIL ASSEMBLY
48	2Z1-005-01	816-5 BALL BEARING	31	2R5-113-01	BAIL TRIP LEVER
49	2G2-041-01	PINION GEAR	33	2R4-114-01	BAIL SPRING COVER
50	2C2-048-01	PINION GEAR BUSHING	49	2G2-054-01	PINION GEAR
51	2A2-027-01	ANTI-REVERSE CAM	56	2G3-031-01	WORM SHAFT GEAR
52	2Q3-009-01	ANTI-REVERSE SPRING	71	2G1-041-01	DRIVE GEAR
53	2YB-092-01	BODY ASSEMBLY			