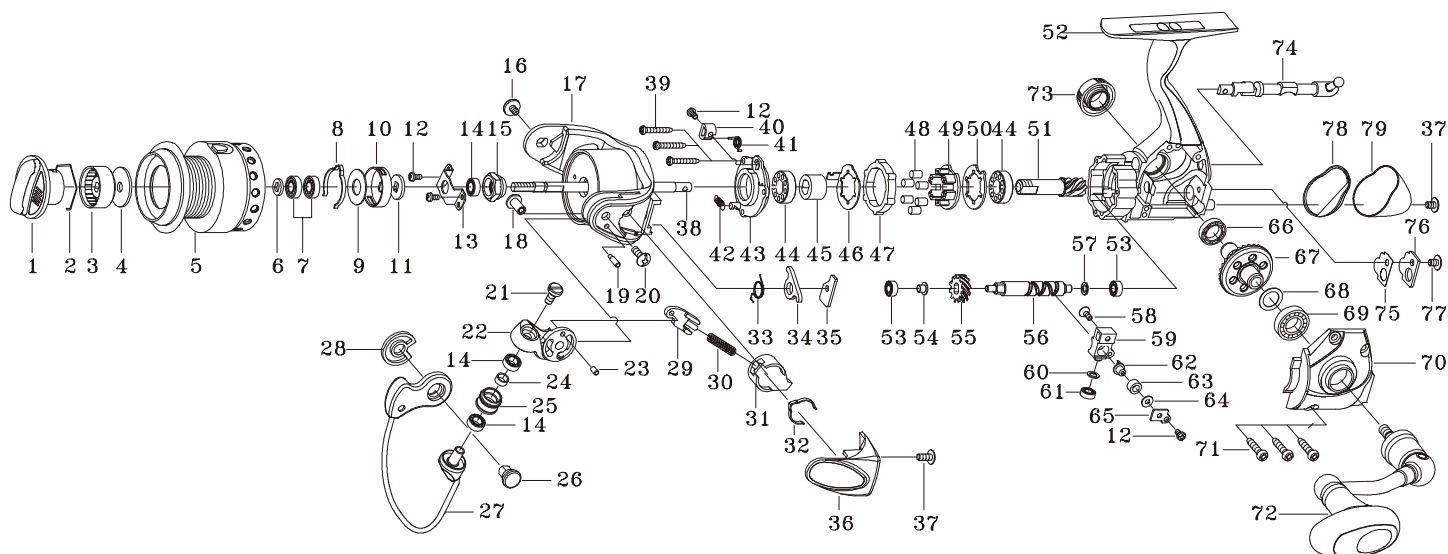




SPINNING REEL TP1000S / TP2000S (BLACK SERIES)



Key NO.	Parts No.	Parts name	Key NO.	Parts No.	Parts name
2-5	2YT-167-01	SPOOL ASSEMBLY	42	2Q2-016-01	SPRING
1	2YD-047-01	DRAG KNOB ASSEMBLY	43	2F8-081-01	BALL BEARING HOLDER
2	2E4-021-01	DRAG WASHER RETAINER	44	2Z1-006-02	613-3.5 BALL BEARING
3	2F3-048-01	DRAG KNOB CLICK NUT	45	2A4-054-01	ONE-WAY CLUTCH INNER TUBE
4	2W1-139-01	050-160 WASHER	46	2F2-038-01	REBOUND PLATE
5	2YS-101-01	SPOOL ASSEMBLY	47	2A3-008-01	ANTI-REVERSE RATCHET
6	2W2-016-01	KEY WASHER	48	2Z3-001-01	ROLLER
7	2Z1-026-01	409-2.5 BALL BEARING	49	2F8-080-01	CAGE
8	2L3-025-01	SPOOL CLICK LEAF SPRING	50	2F2-037-01	ANTI-REVERSE PAWL
9	2W1-145-01	065-145 WASHER	51	2G2-052-01	PINION GEAR
10	2F8-063-01	CLICK LEAF SPRING HOLDER	52	2YB-137-02	BODY ASSEMBLY
11	2W2-015-01	KEY WASHER	53	2Z1-014-02	306-2.5 BALL BEARING
12	2E2-050-01	A20M-035 SCREW	54	2C2-058-01	WORM SHAFT BUSH
13	2F6-048-01	ROTOR NUT HOLDING PLATE	55	2G3-029-01	WORM SHAFT GEAR
14	2Z1-012-02	407-2.5 BALL BEARING	56	2M4-020-01	WORM SHAFT
15	2E3-039-01	ROTOR NUT	57	2W1-058-03	030-050 WASHER
16	2E0-019-01	BAIL HOLDER SCREW	58	2E2-030-01	F20M-050 SCREW
17	2R1-093-02	ROTOR	59	2M1-030-01	OSCILLATING SLIDER
18	2E3-044-01	SHAFT NUT	60	2W1-058-02	030-050 WASHER
19	2P1-033-01	BAIL ARM PIN	61	2Z1-028-01	306-2 BALL BEARING
20	2E2-029-01	B26M-060 SCREW	62	2M5-007-01	LINE GUIDE PIN
21	2E0-031-01	X30M-070 SCREW	63	2C2-034-01	LINE GUIDE PIN BUSH
22	2R2-040-02	BAIL ARM	64	2W1-059-01	020-049 WASHER
23	2P1-035-01	BAIL ARM PIN	65	2F5-154-01	OSCILLATING SLIDER COVER
24	2C1-077-01	LINE ROLLER COLLAR	66	2Z1-011-02	711-2.5 BALL BEARING
25	2R6-022-01	LINE ROLLER	67	2G1-039-01	DRIVE GEAR
26	2E3-046-01	BAIL HOLDER NUT	68	2W1-019-00	071-103 WASHER
27	2YL-104-01	BAIL ASSEMBLY	69	2Z1-002-02	714-3.5 BALL BEARING
28	2F6-065-01	HOLDING PLATE	70	2B2-036-02	BODY COVER
29	2R5-116-01	BAIL TRIP SHAFT	71	2E2-031-02	A26M-075 SCREW
30	2Q1-043-01	BAIL SPRING	72	2YH-141-01	HANDLE ASSEMBLY
31	2C2-085-01	BAIL SPRING GUIDE	73	2H6-013-01	HANDLE SCREW CAP
32	2L3-030-01	CLICK LEAF SPRING	74	2YA-023-01	ANTI-REVERSE CAM ASSEMBLY
33	2Q3-056-01	BAIL TRIP LEVER SPRING	75	2W5-034-01	WORM SHAFT COVER GASKET
34	2R5-103-01	BAIL TRIP LEVER	76	2F5-155-01	WORM SHAFT COVER
35	2W5-037-01	SPACER	77	2E2-003-01	B26M-036 SCREW
36	2YR-054-01	BAIL SPRING COVER ASSEMBLY	78	2F6-053-01	WATER SHIELD
37	2E0-010-01	X26M-060 SCREW	79	2F5-156-01	REAR COVER
38	2M3-065-01	MAIN SHAFT	TP2000S	SPECIAL PARTS	
39	2E2-034-01	A20M-090 SCREW	2-5	2YT-168-01	SPOOL ASSEMBLY
40	2A2-058-01	CAM	5	2YS-102-01	SPOOL ASSEMBLY
41	2Q3-087-01	ANTI-REVERSE SPRING			