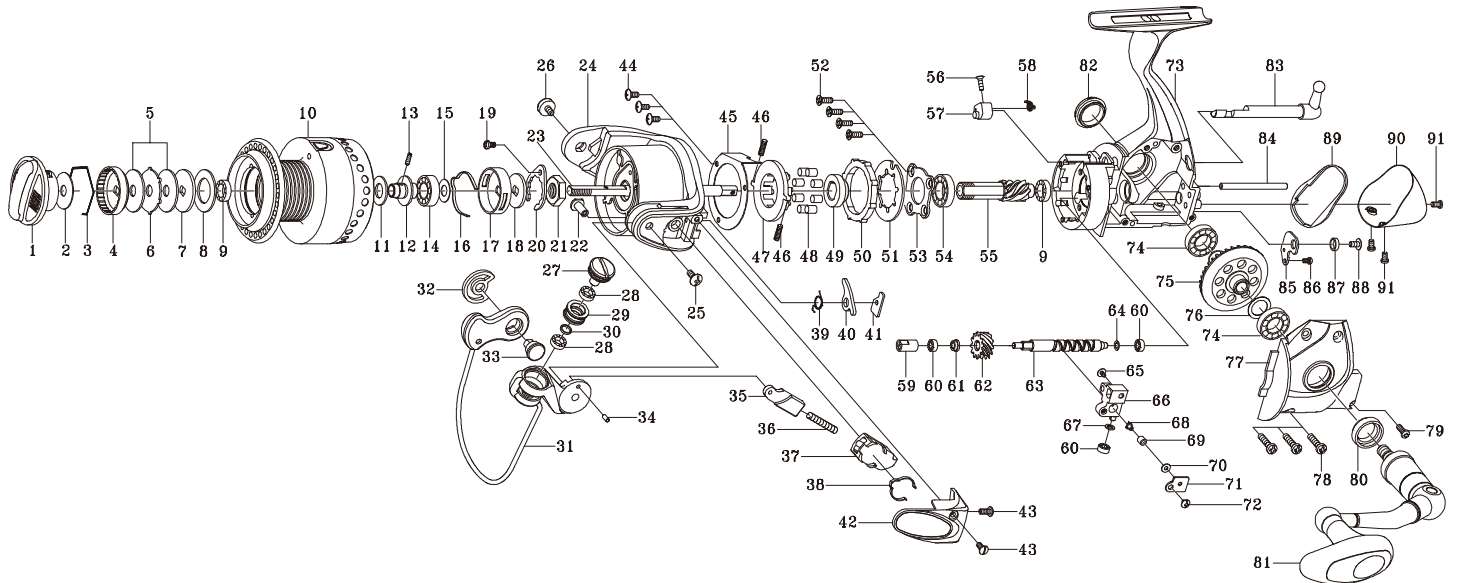


## SPINNING REEL

**TP5000S/TP6000S (BLACK SERIES)**  
**TP5000SH/TP6000SH**

Please order by parts number, not key number  
 Bitte, Best.-Nr. angeben (Nicht "key" -nr.)  
 Veuillez indiquer le numero de la piece (Non "key" no.)



Key NO.	Parts No.	Parts name	Key NO.	Parts No.	Parts name
2-10	2YT-119-01	SPOOL ASSEMBLY	54	2Z1-007-03	917-4 BALL BEARING
1	2YD-029-01	DRAG KNOB ASSEMBLY	55	2G2-004-01	PINION GEAR
2	2W1-092-01	060-210 WASHER	56	2E2-002-02	E20M-060 SCREW
3	2E4-013-01	DRAG WASHER RETAINER	57	2A2-024-01	CAM
4	2F3-032-01	DRAG KNOB CLICK NUT	58	2Q3-072-01	ANTI-REVERSE SPRING
5	2W1-094-01	060-220 WASHER	59	2C2-045-01	WORM SHAFT BUSH
6	2W3-013-01	EARED WASHER	60	2Z1-014-02	306-2.5 BALL BEARING
7	2W2-027-01	KEY WASHER	61	2C1-046-01	COLLAR
8	2W1-091-01	132-220 WASHER	62	2G3-011-01	WORM SHAFT GEAR
9	2Z1-009-02	711-3 BALL BEARING	63	2M4-006-01	WORM SHAFT
10	2YS-057-01	SPOOL ASSEMBLY	64	2W1-107-01	030-050 WASHER
11	2W1-082-01	076-150 WASHER	65	2E2-052-01	F26M-080 SCREW
12	2C1-038-01	BEARING SPACER	66	2M1-022-01	OSCILLATING SLIDER
13	2E2-038-01	X20M-065 SCREW	67	2W1-058-03	030-050 WASHER
14	2Z1-005-02	816-5 BALL BEARING	68	2M5-001-01	LINE GUIDE PIN
15	2W1-081-00	055-120 WASHER	69	2C2-034-01	LINE GUIDE PIN BUSH
16	2L3-015-01	SPOOL CLICK LEAF SPRING	70	2W1-059-01	020-049 WASHER
17	2F8-019-01	CLICK LEAF SPRING HOLDER	71	2F5-051-01	OSCILLATING SLIDER COVER
18	2W2-019-01	KEY WASHER	72	2E2-006-01	B26M-050 SCREW
19	2E2-016-01	A26M-040 SCREW	73	2YB-139-02	BODY ASSEMBLY
20	2F6-028-01	ROTOR NUT HOLDING PLATE	74	2Z1-007-02	917-4 BALL BEARING
21	2E3-003-01	ROTOR NUT	75	2G1-023-01	DRIVE GEAR
22	2E3-040-02	SHAFT NUT	76	2W1-014-03	091-130 WASHER
23	2M3-036-01	MAIN SHAFT	77	2B2-027-02	BODY COVER
24	2R1-096-02	ROTOR	78	2E2-036-01	A30M-130 SCREW
25	2E2-018-01	B30M-080 SCREW	79	2E2-031-01	A26M-075 SCREW
26	2E0-008-02	BAIL HOLDER SCREW	80	2B4-009-01	BODY FLANGE
27	2E0-004-01	LINE ROLLER SCREW	81	2YH-139-01	HANDLE ASSEMBLY
28	2Z1-001-01	508-2.5 BALL BEARING	82	2H6-011-01	HANDLE SCREW CAP
29	2R6-014-01	LINE ROLLER	83	2YA-010-01	ANTI-REVERSE CAM ASSEMBLY
30	2W4-008-01	SPACER	84	2P1-021-01	OSCILLATING SLIDER PIN
31	2YL-103-02	BAIL ASSEMBLY	85	2F5-068-01	WORM SHAFT COVER
32	2F6-064-01	HOLDING PLATE	86	2E2-006-01	B26M-050 SCREW
33	2E3-043-01	BAIL HOLDER NUT	87	2W4-006-01	SPACER
34	2P1-016-01	BAIL ARM PIN	88	2E2-050-01	A20M-035 SCREW
35	2R5-114-01	BAIL TRIP SHAFT	89	2F6-014-01	WATER SHIELD
36	2Q1-077-01	BAIL SPRING	90	2F5-067-01	REAR COVER
37	2C2-086-01	BAIL SPRING GUIDE	91	2E0-006-01	X26M-045 SCREW
38	2L3-029-01	CLICK LEAF SPRING			
39	2Q3-056-01	BAIL TRIP LEVER SPRING	TP6000S SPECIAL PARTS		
40	2R5-115-01	BAIL TRIP LEVER	2-10	2YT-120-01	SPOOL ASSEMBLY
41	2W5-037-01	SPACER	10	2YS-058-01	SPOOL ASSEMBLY
42	2YR-056-01	BAIL SPRING COVER ASSEMBLY	TP5000SH SPECIAL PARTS		
43	2E0-010-01	X26M-060 SCREW	2-10	2YT-119-02	SPOOL ASSEMBLY
44	2E2-006-03	B26M-050 SCREW	10	2YS-057-02	SPOOL ASSEMBLY
45	2F5-196-01	ROLLER CLUTCH RETAINER	55	2G2-068-01	PINION GEAR
46	2Q1-071-01	MAGNET RETAINER SPRING	62	2G3-043-01	WORM SHAFT GEAR
47	2F8-084-01	CAGE	75	2G1-051-01	DRIVE GEAR
48	2Z3-003-01	ROLLER	TP6000SH SPECIAL PARTS		
49	2A4-019-01	ONE-WAY CLUTCH INNER TUBE	2-10	2YT-120-02	SPOOL ASSEMBLY
50	2A3-009-01	ANTI-REVERSE RATCHET	10	2YS-058-02	SPOOL ASSEMBLY
51	2F2-035-01	ANTI-REVERSE PAWL	55	2G2-068-01	PINION GEAR
52	2E2-052-01	F26M-080 SCREW	62	2G3-043-01	WORM SHAFT GEAR
53	2F5-178-01	BEARING RETAINER	75	2G1-051-01	DRIVE GEAR