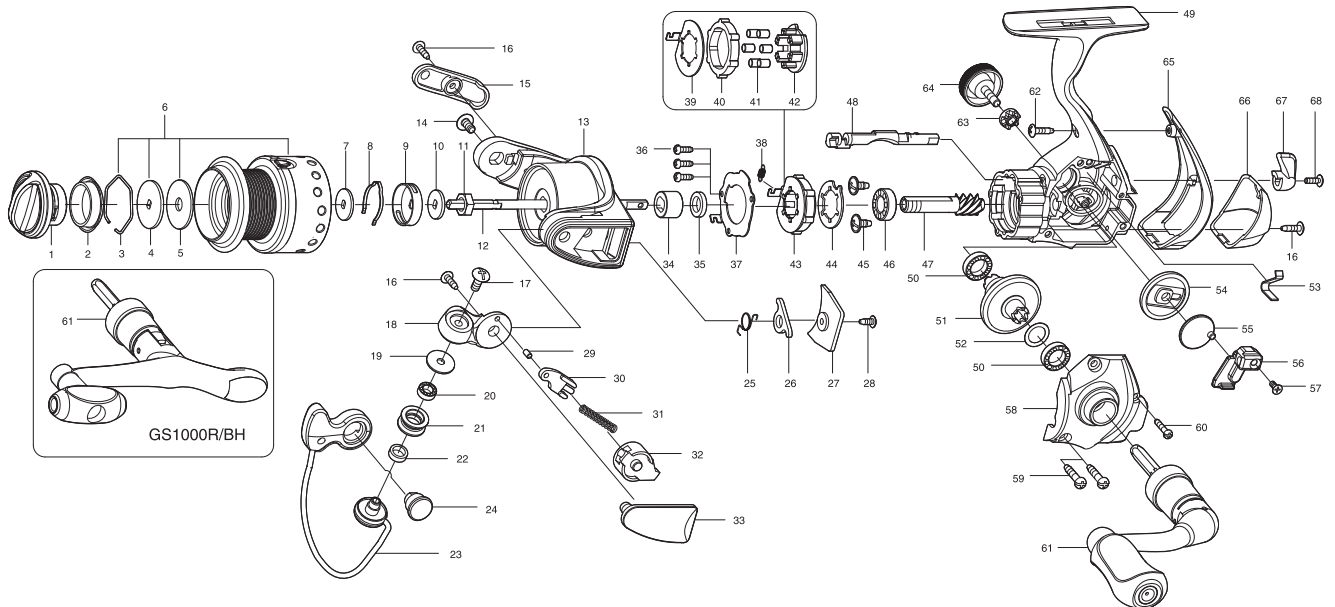


SPINNING REEL

GS1000R / GS1000R/BH

Please order by parts number, not key number
Bitte, Best.-Nr. angeben (Nicht "key" -nr.)
Veuillez indiquer le numero de la pièce (Non "key" no.)



Key NO.	Parts No.	Parts name	Key NO.	Parts No.	Parts name
1	2YD-074-03	DRAG KNOB ASSEMBLY	36	2E1-050-01	A20-060 SCREW
2	2E9-019-01	PROOF WATER RING	37	2F5-307-01	ROLLER CLUTCH RETAINER
3	2E4-009-01	DRAG WASHER RETAINER	38	2Q2-016-01	SPRING
4	2W2-057-01	KEY WASHER	39	2F2-042-01	ANTI-REVERSE PAWL
5	2W1-052-01	050-187 WASHER	40	2A3-008-01	ANTI-REVERSE RATCHET
6	2YT-341-06	SPOOL TOTAL ASSEMBLY	41	2Z3-001-01	ROLLER
7	2W2-055-01	KEY WASHER	42	2F8-080-01	CAGE
8	2L3-025-01	CLICK LEAF SPRING	43	2YZ-021-01	ONE-WAY CLUTCH BEARING ASSEMBLY
9	2F8-063-02	CLICK LEAF SPRING HOLDER	44	2F2-037-01	ANTI-REVERSE PAWL
10	2W2-056-01	KEY WASHER	45	2E1-019-01	D26-060 SCREW
11	2E3-062-01	ROTOR NUT	46	2Z1-019-05	612-4 BALL BEARING
12	2M3-108-01	MAIN SHAFT	47	2G2-114-01	PINION GEAR
13	2R1-115-03	ROTOR	48	2A2-081-01	ANTI-REVERSE CAM
14	2E2-004-01	B30M-060 SCREW	49	2B1-127-03	BODY
15	2R4-147-03	BAIL TRIP COVER	50	2Z1-009-05	711-3 BALL BEARING
16	2E1-048-01	B22-080 SCREW	51	2G1-097-02	DRIVE GEAR
17	2E2-018-01	B30M-080 SCREW	52	2W1-019-00	071-103 WASHER
18	2R2-049-01	BAIL ARM	53	2L5-012-01	ANTI-REVERSE CAM SPRING
19	2C1-034-01	LINE ROLLER COLLAR	54	2G3-078-01	OSCILLATING GEAR
20	2Z1-012-05	407-2.5 BALL BEARING	55	2M2-013-01	OSCILLATING CAM
21	2R6-020-01	LINE ROLLER	56	2M1-053-01	OSCILLATING SLIDER
22	2C2-032-01	LINE ROLLER BUSH	57	2E2-030-02	F20M-050 SCREW
23	2YL-123-01	BAIL ASSEMBLY	58	2B2-083-03	BODY COVER
24	2E3-019-01	BAIL HOLDER NUT	59	2E1-005-02	A26-120 SCREW
25	2Q3-056-01	BAIL TRIP LEVER SPRING	60	2E1-066-01	A20-100 SCREW
26	2R5-103-01	BAIL TRIP LEVER	61	2YH-237-02	HANDLE ASSEMBLY
27	2F5-308-03	ROTOR COVER	62	2E1-029-01	B22-090 SCREW
28	2E1-020-02	B22-055 SCREW	63	2C3-042-01	HANDLE SCREW SLEEVE
29	2P1-035-01	BAIL ARM PIN	64	2H6-001-10	HANDLE SCREW CAP
30	2R5-116-01	BAIL TRIP SHAFT	65	2F5-310-02	REAR COVER A
31	2Q1-043-01	BAIL SPRING	66	2F5-311-01	REAR COVER B
32	2C2-085-02	BAIL SPRING GUIDE	67	2A1-022-04	ANTI-REVERSE LEVER
33	2R4-148-03	BAIL SPRING COVER	68	2E2-013-02	B20M-060 SCREW
34	2A4-054-01	ONE-WAY CLUTCH INNER TUBE	GS1000R/BH	SPECIAL PARTS	
35	2C1-090-01	COLLAR	61	2YH-239-0	HANDLE ASSEMBLY