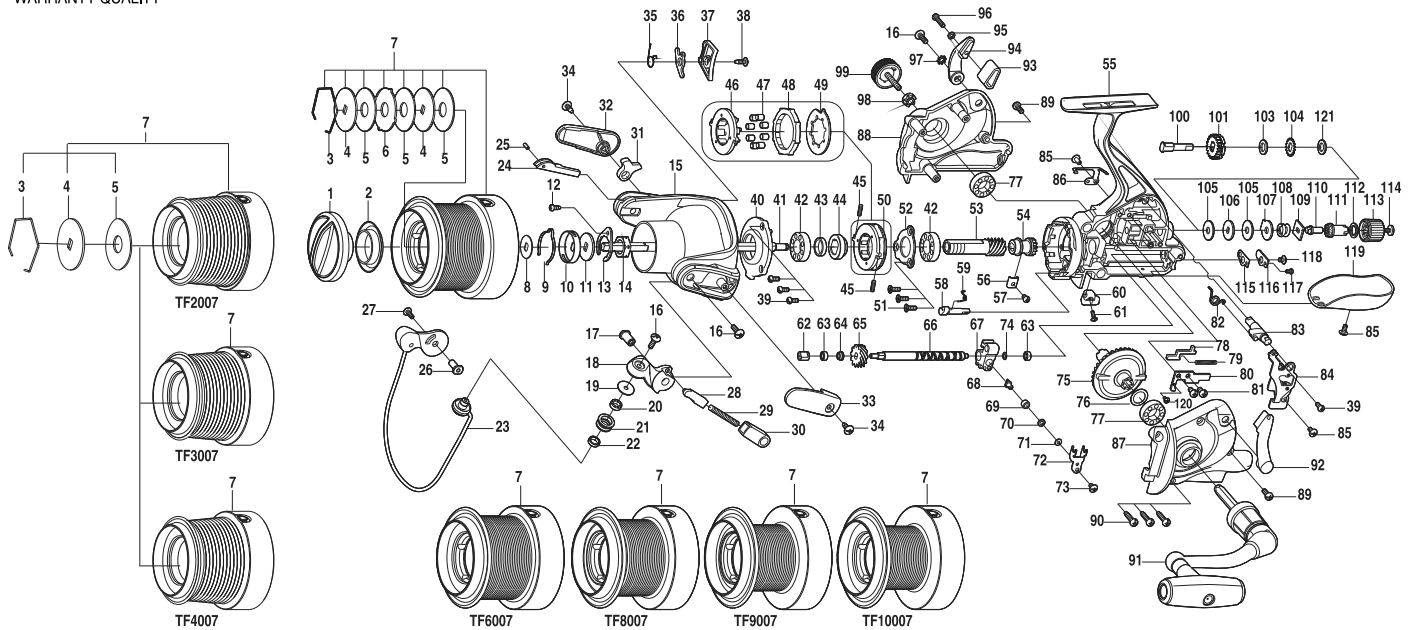




SPINNING REEL

TF2007R/3007R/4007R/5007R/6007R/8007R/9007R/10007R

Please order by parts number, not key number
Bitte, Best.-Nr. angeben (Nicht "key" -nr.)
Veuillez indiquer le numero de la piece (Non "key" no.)



Key NO.	Parts No.	Parts name	Key NO.	Parts No.	Parts name
1	2YD-069-01	DRAG KNOB ASSEMBLY	68	2M5-004-01	LINE GUIDE PIN
2	2E9-015-01	PROOF WATER RING	69	2C2-034-01	LINE GUIDE PIN BUSH
3	2E4-003-01	DRAG WASHER RETAINER	70	2W1-107-02	030-050 WASHER
4	2W2-048-02	KEY WASHER	71	2W1-059-01	020-049 WASHER
5	2W1-175-01	100-300 WASHER	72	2E5-042-01	OSCILLATING SLIDER RETAINER
6	2W3-027-01	EARED WASHER	73	2E2-006-01	B26M-050 SCREW
7	2YT-284-03	SPOOL TOTAL ASSEMBLY	74	2W1-058-02	030-050 WASHER
8	2W2-050-01	KEY WASHER	75	2G1-081-01	DRIVE GEAR
9	2L3-018-01	CLICK LEAF SPRING	76	2W1-014-00	091-130 WASHER
10	2F8-027-02	CLICK LEAF SPRING HOLDER	77	2Z1-035-05	917-5 BALL BEARING
11	2W2-034-01	KEY WASHER	78	2F6-087-01	CLUTCH PAWL
12	2E1-060-01	A26-060 SCREW	79	2Q1-091-01	CLUTCH PAWL SPRING
13	2F6-028-01	ROTOR NUT HOLDING PLATE	80	2F5-268-01	CLUTCH COVER
14	2E3-026-01	ROTOR NUT	81	2E2-049-01	A30M-060 SCREW
15	2R1-112-01	ROTOR	82	2Q3-103-01	LEVER SHAFT SPRING
16	2E2-007-01	B30M-100 SCREW	83	2A2-076-01	HIT AND RUN LEVER SHAFT
17	2E3-055-01	SHAFT NUT(A)	84	2YF-102-01	HOLDING PLATE ASSEMBLY
18	2R2-046-01	BAIL ARM	85	2E2-029-01	B26M-060 SCREW
19	2C1-049-01	LINE ROLLER COLLAR	86	2L2-017-01	CLICK PAWL
20	2Z1-001-05	508-2.5 BALL BEARING	87	2B2-061-01	BODY COVER(L)
21	2R6-018-01	LINE ROLLER	88	2B2-060-01	BODY COVER(R)
22	2C1-068-01	COLLAR	89	2E2-060-03	A30M-100 SCREW
23	2YL-122-01	BAIL ASSEMBLY	90	2E1-006-02	A30-130 SCREW
24	2R5-127-01	BAIL PAWL	91	2YH-199-01	HANDLE ASSEMBLY
25	2P1-055-01	BAIL TRIP PIN	92	2D4-006-01	HIT AND RUN LEVER ARM (L)
26	2E3-056-01	SHAFT NUT(B)	93	2C3-026-01	LEVER ARM SPACER
27	2E2-005-03	B26M-080 SCREW	94	2D4-005-01	HIT AND RUN LEVER ARM (R)
28	2R5-126-01	BAIL TRIP SHAFT	95	2W1-127-01	027-048 WASHER
29	2Q1-077-01	BAIL SPRING	96	2E2-039-01	A26M-120 SCREW
30	2C2-102-01	BAIL SPRING GUIDE	97	2E8-004-01	STARWASHER
31	2R5-128-01	BAIL TRIP LEVER A	98	2C3-047-01	HANDLE SCREW SLEEVE
32	2R4-132-01	BAIL TRIP COVER	99	2H6-002-10	HANDLE SCREW CAP
33	2R4-131-01	BAIL SPRING COVER	100	2M3-097-01	CLICK SHAFT
34	2E1-037-01	B30-080 SCREW	101	2YA-030-01	CLUTCH RATCHET ASSEMBLY
35	2Q3-104-01	BAIL TRIP LEVER SPRING	103	2W1-097-02	059-100 WASHER
36	2R5-129-01	BAIL TRIP LEVER B	104	2F3-059-01	CLICK GEAR B
37	2F5-270-01	ROTOR COVER	105	2W1-190-01	046-135 WASHER
38	2E1-016-02	B26-080 SCREW	106	2W2-051-01	KEY WASHER
39	2E2-037-01	A26M-060 SCREW	107	2W5-056-01	EARED WASHER A
40	2F8-094-01	BEARING HOLDER	108	2Q1-049-01	DRAG SPRING
41	2M3-096-01	MAIL SHAFT	109	2W5-057-01	EARED WASHER B
42	2Z1-008-05	1020-5 BALL BEARING	110	2M3-098-01	DRAG KNOB CLICK SHAFT
43	2C1-096-01	COLLAR	111	2F3-060-01	DRAG KNOB CLICK NUT
44	2A4-034-01	ONE-WAY CLUTCH INNER TUBE	112	2W1-011-01	071-100 WASHER
45	2Q1-071-01	CAGE SPRING	113	2D1-057-01	HIT AND RUN CONTROL KNOB
46	2F8-084-01	CAGE	114	2E0-019-02	BAIL HOLDER SCREW
47	2Z3-003-01	ROLLER	115	2W5-055-01	WORM SHAFT COVER GASKET
48	2A3-009-01	ANTI-REVERSE RATCHET	116	2F5-266-01	WORM SHAFT COVER
49	2F2-033-01	ANTI-REVERSE PAWL	117	2E2-050-01	A20M-035 SCREW
50	2YZ-020-01	ONE-WAY CLUTCH BEARING ASSEMBLY	118	2E2-003-01	B26M-036 SCREW
51	2E2-052-02	F26M-080 SCREW	119	2F5-269-01	DECORATION COVER
52	2F5-259-01	BEARING RETAINER	120	2E2-051-01	B23M-060 SCREW
53	2G2-099-01	PINION GEAR	121	2W1-097-01	059-100 WASHER
54	2G3-072-01	BRAKE GEAR A	TF2007R	SPECIAL PARTS	SPOOL TOTAL ASSEMBLY
55	2YB-160-01	BODY ASSEMBLY	7	2YT-281-03	SPOOL TOTAL ASSEMBLY
56	2F6-086-01	GEAR FIXED PLATE	TF3007R	SPECIAL PARTS	SPOOL TOTAL ASSEMBLY
57	2E2-016-01	A26M-040 SCREW	7	2YT-282-03	SPOOL TOTAL ASSEMBLY
58	2A2-075-01	ANTI-REVERSE CAM	TF4007R	SPECIAL PARTS	SPOOL TOTAL ASSEMBLY
59	2Q3-009-01	ANTI-REVERSE SPRING	7	2YT-283-03	SPOOL TOTAL ASSEMBLY
60	2A1-026-01	ANTI-REVERSE LEVER	TF6007R	SPECIAL PARTS	SPOOL TOTAL ASSEMBLY
61	2E2-013-02	B20M-060 SCREW	7	2YT-285-03	SPOOL TOTAL ASSEMBLY
62	2C2-101-01	WORM SHAFT BUSH	TF8007R	SPECIAL PARTS	SPOOL TOTAL ASSEMBLY
63	2Z1-014-05	306-2.5 BALL BEARING	7	2YT-286-03	SPOOL TOTAL ASSEMBLY
64	2C1-046-01	COLLAR	TF9007R	SPECIAL PARTS	SPOOL TOTAL ASSEMBLY
65	2G3-035-01	OSCILLATING GEAR	7	2YT-287-03	SPOOL TOTAL ASSEMBLY
66	2M4-029-01	WORM SHAFT	TF10007R	SPECIAL PARTS	SPOOL TOTAL ASSEMBLY
67	2M1-045-01	OSCILLATING SLIDER	7	2YT-288-03	SPOOL TOTAL ASSEMBLY