



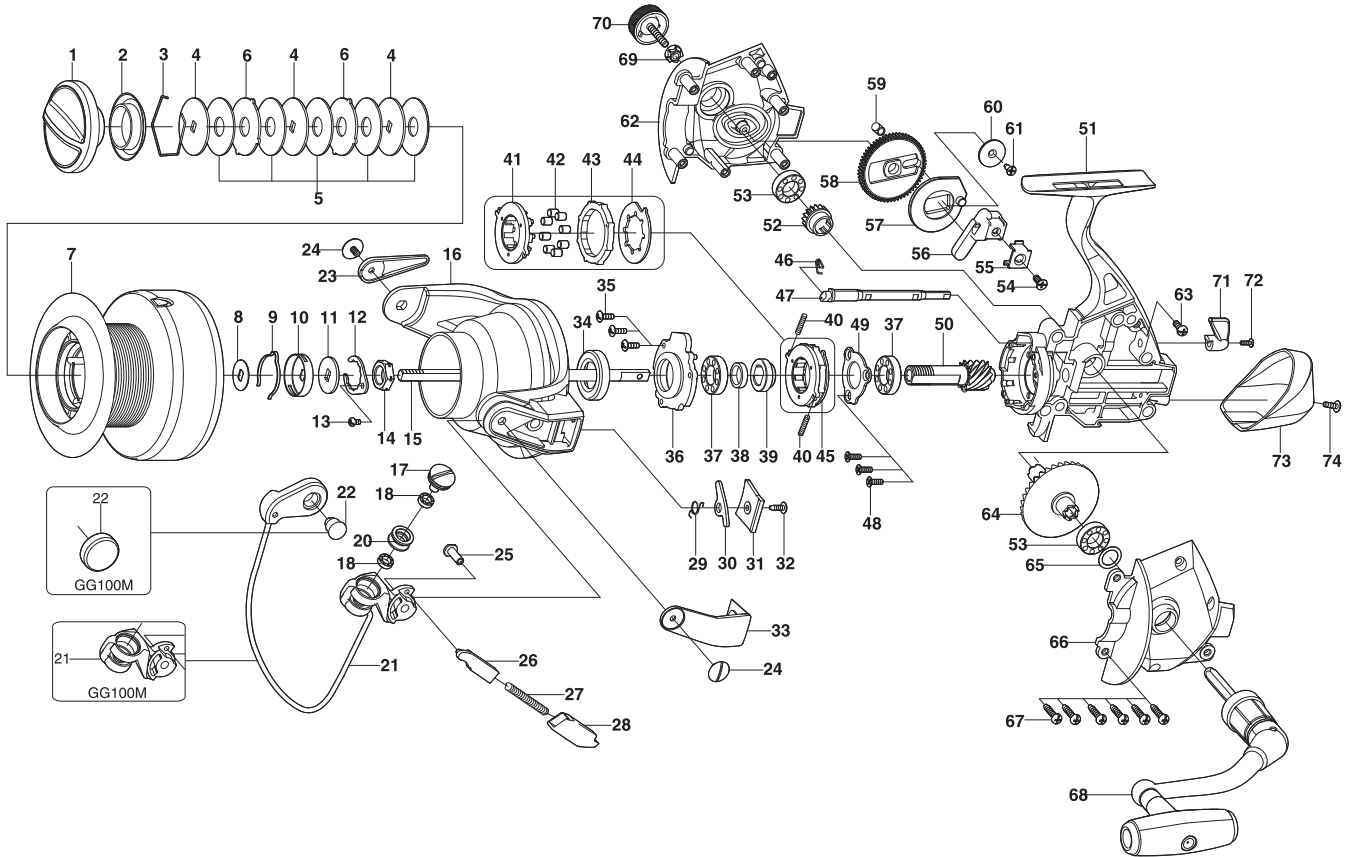
SPINNING REEL

CYBERNETIC

Hi-Tech Frame System

Please order by parts number, not key number
 Bitte, Best.-Nr. angeben (Nicht "key" -nr.)
 Veuillez indiquer le numero de la piece (Non "key" no.)

GG100R / GG100R/M/ GG100R/H



Key NO.	Parts No.	Parts name	Key NO.	Parts No.	Parts name
3-7	2YT-279-03	SPOOL TOTAL ASSEMBLY	43	2A3-009-01	ANTI-REVERSE RATCHET
1	2YD-064-01	DRAG KNOB ASSEMBLY	44	2F2-033-01	ANTI-REVERSE PAWL
2	2E9-015-01	PROOF WATER RING	45	2YZ-020-01	ONE-WAY CLUTCH BEARING ASSEMBLY
3	2E4-003-01	DRAG WASHER RETAINER	46	2Q3-009-01	ANTI-REVERSE SPRING
4	2W2-048-02	KEY WASHER	47	2A2-073-01	ANTI-REVERSE CAM
5	2W1-175-01	100-300 WASHER	48	2E2-052-01	F26M-080 SCREW
6	2W3-027-01	EARED WASHER	49	2F5-259-01	BEARING RETAINER
7	2YS-183-03	SPOOL ASSEMBLY	50	2G2-090-01	PINION GEAR
8	2W2-050-01	KEY WASHER	51	2B1-098-01	BODY
9	2L3-018-01	CLICK LEAF SPRING	52	2G3-063-01	DRIVE PINION
10	2F8-027-02	CLICK LEAF SPRING HOLDER	53	2Z1-035-05	917-5 BALL BEARING
11	2W2-034-01	KEY WASHER	54	2E2-011-01	F30M-080 SCREW
12	2F6-028-01	ROTOR NUT HOLDING PLATE	55	2E5-034-01	OSCILLATING SLIDER RETAINER
13	2E1-060-01	A26-060 SCREW	56	2M1-044-01	OSCILLATING SLIDER
14	2E3-026-01	ROTOR NUT	57	2M2-011-01	OSCILLATING CAM
15	2M3-088-01	MAIN SHAFT	58	2G3-064-01	OSCILLATING GEAR
16	2R1-106-01	ROTOR	59	2C1-089-01	COLLAR
17	2E0-004-02	LINE ROLLER SCREW	60	2W5-062-01	COVER
18	2Z1-001-05	508-2.5 BALL BEARING	61	2E1-063-01	F26-070 SCREW
19	2W4-008-01	SPACER	62	2B2-058-01	BODY COVER(R)
20	2R6-014-01	LINE ROLLER	63	2E1-009-01	A30-100 SCREW
21	2YL-115-01	BAIL ASSEMBLY	64	2G1-077-01	DRIVE GEAR
22	2R3-020-03	BAIL HOLDER	65	2W1-014-00	091-130 WASHER
23	2R4-130-01	BAIL TRIP COVER	66	2B2-059-01	BODY COVER(L)
24	2E0-039-01	SIDE COVER SCREW	67	2E1-006-02	A30-130 SCREW
25	2E3-051-01	SHAFT NUT	68	2YH-196-01	HANDLE TOTAL ASSEMBLY
26	2R5-088-01	BAIL TRIP SHAFT	69	2C3-047-01	HANDLE SCREW SLEEVE
27	2Q1-092-01	BAIL SPRING	70	2H6-002-01	HANDLE SCREW CAP
28	2C2-096-01	BAIL SPRING GUIDE	71	2A1-025-04	ANTI-REVERSE LEVER
29	2Q3-056-01	BAIL TRIP LEVER SPRING	72	2E2-013-02	B20M-060 SCREW
30	2R5-087-01	BAIL TRIP LEVER	73	2F5-258-01	REAR COVER
31	2F5-267-01	ROTOR COVER	74	2E2-005-03	B26M-080 SCREW
32	2E1-016-02	B26-080 SCREW	GG100R/M	SPECIAL PARTS	
33	2R4-129-01	BAIL SPRING COVER	3-7	2YT-279-04	SPOOL TOTAL ASSEMBLY
34	2E9-026-01	PROOF WATER RING	7	2YS-183-04	SPOOL ASSEMBLY
35	2E2-005-03	B26M-080 SCREW	21	2YR-070-01	BAIL ARM ASSEMBLY
36	2F8-087-01	BEARING HOLDER	22	2R3-039-01	BAIL HOLDER
37	2Z1-008-05	1020-5 BALL BEARING	GG100R/H	SPECIAL PARTS	
38	2C1-096-01	COLLAR	3-7	2YT-279-05	SPOOL TOTAL ASSEMBLY
39	2A4-034-01	ONE-WAY CLUTCH INNER TUBE	7	2YS-183-05	SPOOL ASSEMBLY
40	2Q1-071-01	CAGE SPRING	50	2G2-119-01	PINION GEAR
41	2F8-084-01	CAGE	64	2G1-108-01	DRIVE GEAR
42	2Z3-003-01	ROLLER			