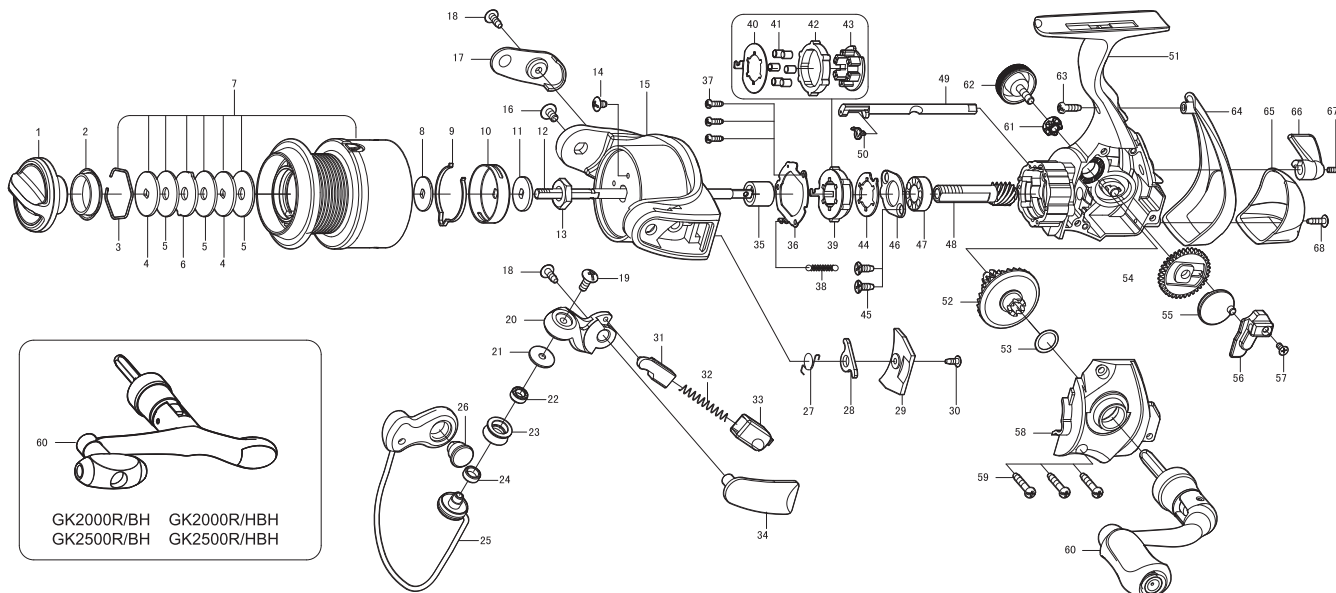




SPINNING REEL

**GK2000R/GK2000R/BH/GK2000R/H/GK2000R/HBH
GK2500R/GK2500R/BH/GK2500R/H/GK2500R/HBH**

Please order by parts number, not key number
Bitte, Best.-Nr. angeben (Nicht "key" -nr.)
Veuillez indiquer le numero de la piece (Non "key" no.)



Key NO.	Parts No.	Parts name	Key NO.	Parts No.	Parts name
1	2YD-024-03	DRAG KNOB ASSEMBLY	48	2G2-093-01	PINION GEAR
2	2E9-019-01	PROOF WATER RING	49	2A2-077-01	ANTI-REVERSE CAM
3	2E4-009-01	DRAG WASHER RETAINER	50	2Q3-009-01	ANTI-REVERSE SPRING
4	2W2-013-01	KEY WASHER	51	2YB-161-01	BODY ASSEMBLY
5	2W1-052-01	050-187 WASHER	52	2G1-092-02	DRIVE GEAR
6	2W3-014-01	EARED WASHER	53	2W1-035-00	080-105 WASHER
7	2YT-297-09	SPOOL TOTAL ASSEMBLY	54	2G3-060-01	OSCILLATING GEAR
8	2W2-020-01	KEY WASHER	55	2M2-010-01	OSCILLATING CAM
9	2L3-014-01	CLICK LEAF SPRING	56	2M1-043-01	OSCILLATING SLIDER
10	2F8-013-01	CLICK LEAF SPRING HOLDER	57	2E2-030-02	F20M-050 SCREW
11	2W2-015-01	KEY WASHER	58	2YC-098-01	BODY COVER ASSEMBLY
12	2M3-091-01	MAIN SHAFT	59	2E1-031-01	A26-140 SCREW
13	2E3-007-01	ROTOR NUT	60	2YH-237-01	HANDLE ASSEMBLY
14	2E1-036-01	B26-040 SCREW	61	2C3-042-01	HANDLE SCREW SLEEVE
15	2R1-107-02	ROTOR	62	2H6-001-10	HANDLE SCREW CAP
16	2E2-004-01	B30M-060 SCREW	63	2E1-045-01	A26-080 SCREW
17	2R4-094-02	BAIL TRIP COVER	64	2F5-273-02	REAR COVER A
18	2E1-016-02	B26-080 SCREW	65	2F5-274-02	REAR COVER B
19	2E2-018-01	B30M-080 SCREW	66	2A1-022-04	ANTI-REVERSE LEVER
20	2R2-031-01	BAIL ARM	67	2E2-013-02	B20M-060 SCREW
21	2C1-034-01	LINE ROLLER COLLAR	68	2E1-048-01	B22-080 SCREW
22	2Z1-012-05	407-2.5 BALL BEARING	GK2000R/H	SPECIAL PARTS	
23	2R6-020-01	LINE ROLLER	7	2YT-297-10	SPOOL TOTAL ASSEMBLY
24	2C2-032-01	LINE ROLLER BUSH	48	2G2-110-01	PINION GEAR
25	2YL-117-01	BAIL ASSEMBLY	52	2G1-093-02	DRIVE GEAR
26	2E3-019-01	BAIL HOLDER NUT	GK2000R/BH	SPECIAL PARTS	
27	2Q3-056-01	BAIL TRIP LEVER SPRING	60	2YH-239-01	HANDLE ASSEMBLY
28	2R5-105-01	BAIL TRIP LEVER	GK2000R/HBH	SPECIAL PARTS	
29	2F5-279-02	ROTOR COVER	7	2YT-297-10	SPOOL TOTAL ASSEMBLY
30	2E1-020-02	B22-055 SCREW	48	2G2-110-01	PINION GEAR
31	2R5-090-01	BAIL TRIP SHAFT	52	2G1-093-02	DRIVE GEAR
32	2Q1-023-01	BAIL SPRING	60	2YH-239-01	HANDLE ASSEMBLY
33	2C2-069-01	BAIL SPRING GUIDE	GK2500R	SPECIAL PARTS	
34	2R4-095-02	BALL SPRING COVER	7	2YT-298-09	SPOOL TOTAL ASSEMBLY
35	2A4-021-01	ONE-WAY CLUTCH INNER TUBE	GK2500R/H	SPECIAL PARTS	
36	2F5-213-01	ROLLER CLUTCH RETAINER	7	2YT-298-10	SPOOL TOTAL ASSEMBLY
37	2E1-050-01	A20-060 SCREW	48	2YS-192-10	PINION GEAR
38	2Q2-016-01	SPRING	52	2G1-093-02	DRIVE GEAR
39	2YZ-019-01	ONE-WAY CLUTCH BEARING ASSEMBLY	GK2500R/BH	SPECIAL PARTS	
40	2F2-030-01	ANTI-REVERSE PAWL	7	2YT-298-09	SPOOL TOTAL ASSEMBLY
41	2Z3-001-01	ROLLER	60	2YH-239-01	HANDLE ASSEMBLY
42	2A3-008-01	ANTI-REVERSE RATCHET	GK2500R/HBH	SPECIAL PARTS	
43	2F8-080-01	CAGE	7	2YT-298-10	SPOOL TOTAL ASSEMBLY
44	2F2-037-01	ANTI-REVERSE PAWL	48	2G2-110-01	PINION GEAR
45	2E1-063-01	F26-070 SCREW	52	2G1-093-02	DRIVE GEAR
46	2F5-212-01	BEARING RETAINER	60	2YH-239-01	HANDLE ASSEMBLY
47	2Z1-003-05	714-5 BALL BEARING			