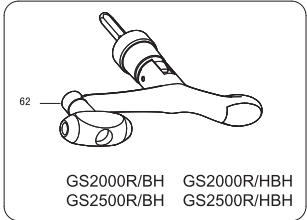
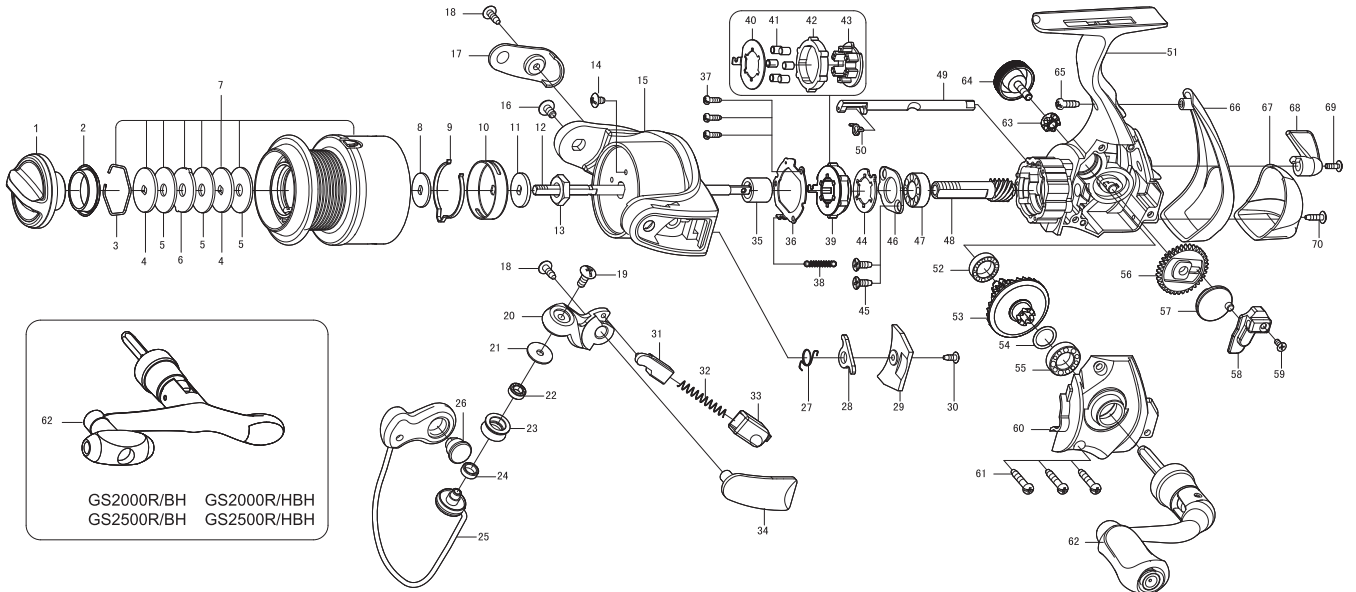




SPINNING REEL

**GS2000R/GS2000R/BH/GS2000R/H/GS2000R/HBH
GS2500R/GS2500R/BH/GS2500R/H/GS2500R/HBH**

Please order by parts number, not key number
Bitte, Best.-Nr. angeben (Nicht "key" -nr.)
Veuillez indiquer le numero de la piece (Non "key" no.)



GS2000R/BH GS2000R/HBH
GS2500R/BH GS2500R/HBH

Key NO.	Parts No.	Parts name	Key NO.	Parts No.	Parts name
1	2YD-054-02	DRAG KNOB ASSEMBLY	49	2A2-077-01	ANTI-REVERSE CAM
2	2E9-019-01	PROOF WATER RING	50	2Q3-009-01	ANTI-REVERSE SPRING
3	2E4-009-01	DRAG WASHER RETAINER	51	2B1-108-03	BODY
4	2W2-013-01	KEY WASHER	52	2Z1-009-05	711-3 BALL BEARING
5	2W1-052-01	050-187 WASHER	53	2G1-092-02	DRIVE GEAR
6	2W3-014-01	EARED WASHER	54	2W1-035-00	080-105 WASHER
7	2YT-297-11	SPOOL TOTAL ASSEMBLY	55	2Z1-010-05	812-3.5 BALL BEARING
8	2W2-020-01	KEY WASHER	56	2G3-060-01	OSCILLATING GEAR
9	2L3-014-01	CLICK LEAF SPRING	57	2M2-010-01	OSCILLATING CAM
10	2F8-013-01	CLICK LEAF SPRING HOLDER	58	2M1-043-01	OSCILLATING SLIDER
11	2W2-015-01	KEY WASHER	59	2E2-030-02	F20M-050 SCREW
12	2M3-091-01	MAIN SHAFT	60	2B2-062-03	BODY COVER
13	2E3-007-01	ROTOR NUT	61	2E1-031-01	A26-140 SCREW
14	2E1-036-01	B26-040 SCREW	62	2YH-23702	HANDLE ASSEMBLY
15	2R1-107-03	ROTOR	63	2C3-042-01	HANDLE SCREW SLEEVE
16	2E2-004-01	B30M-060 SCREW	64	2H6-001-10	HANDLE SCREW CAP
17	2R4-094-03	BAIL TRIP COVER	65	2E1-045-01	A26-080 SCREW
18	2E1-016-02	B26-080 SCREW	66	2F5-273-02	REAR COVER A
19	2E2-018-01	B30M-080 SCREW	67	2F5-274-01	REAR COVER B
20	2R2-031-01	BAIL ARM	68	2A1-022-04	ANTI-REVERSE LEVER
21	2C1-034-01	LINE ROLLER COLLAR	69	2E2-013-02	B20M-060 SCREW
22	2Z1-012-05	407-2.5 BALL BEARING	70	2E1-048-01	B22-080 SCREW
23	2R6-020-01	LINE ROLLER	GS2000R/H	SPECIAL PARTS	
24	2C2-032-01	LINE ROLLER BUSH	7	2YT-297-12	SPOOL TOTAL ASSEMBLY
25	2YL-117-01	BAIL ASSEMBLY	48	2G2-110-01	PINION GEAR
26	2E3-019-01	BAIL HOLDER NUT	53	2G1-093-02	DRIVE GEAR
27	2Q3-056-01	BAIL TRIP LEVER SPRING	GS2000R/BH	SPECIAL PARTS	
28	2R5-105-01	BAIL TRIP LEVER	62	2YH-239-02	HANDLE ASSEMBLY
29	2F5-279-03	ROTOR COVER	GS2000R/HBH	SPECIAL PARTS	
30	2E1-020-02	B22-055 SCREW	7	2YT-297-12	SPOOL TOTAL ASSEMBLY
31	2R5-090-01	BAIL TRIP SHAFT	48	2G2-110-01	PINION GEAR
32	2Q1-023-01	BAIL SPRING	53	2G1-093-02	DRIVE GEAR
33	2C2-069-01	BAIL SPRING GUIDE	62	2YH-239-02	HANDLE ASSEMBLY
34	2R4-095-03	BAIL SPRING COVER	GS2500R	SPECIAL PARTS	
35	2A4-021-01	ONE-WAY CLUTCH INNER TUBE	7	2YT-298-11	SPOOL TOTAL ASSEMBLY
36	2F5-213-01	ROLLER CLUTCH RETAINER	GS2500R/H	SPECIAL PARTS	
37	2E1-050-01	A20-060 SCREW	7	2YT-298-12	SPOOL TOTAL ASSEMBLY
38	2Q2-016-01	SPRING	48	2G2-110-01	PINION GEAR
39	2YZ-019-01	ONE-WAY CLUTCH BEARING ASSEMBLY	53	2G1-093-02	DRIVE GEAR
40	2F2-030-01	ANTI-REVERSE PAWL	GS2500R/BH	SPECIAL PARTS	
41	2Z3-001-01	ROLLER	7	2YT-298-11	SPOOL TOTAL ASSEMBLY
42	2A3-008-01	ANTI-REVERSE RATCHET	62	2YH-239-02	HANDLE ASSEMBLY
43	2F8-080-01	CAGE	GS2500R/HBH	SPECIAL PARTS	
44	2F2-037-01	ANTI-REVERSE PAWL	7	2YT-298-12	SPOOL TOTAL ASSEMBLY
45	2E1-063-01	F26-070 SCREW	48	2G2-110-01	PINION GEAR
46	2F5-212-01	BEARING RETAINER	53	2G1-093-02	DRIVE GEAR
47	2Z1-003-05	714-5 BALL BEARING	62	2YH-239-02	HANDLE ASSEMBLY
48	2G2-093-01	PINION GEAR			