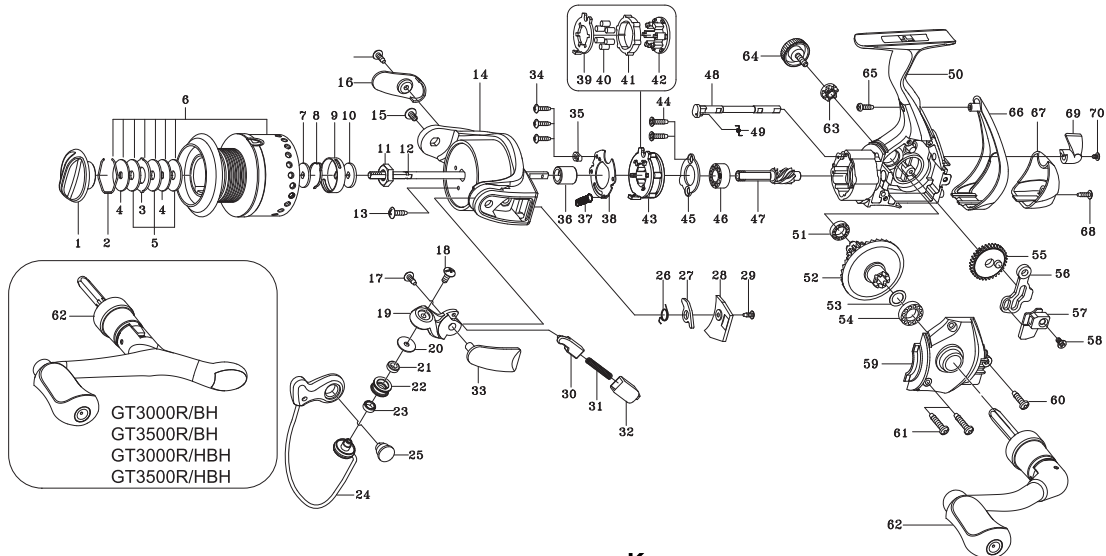




SPINNING REEL

Please order by parts number, not key number
 Bitte, Best.-Nr. angeben (Nicht "key" -nr.)
 Veuillez indiquer le numero de la pièce (Non "key" no.)

GT3000R / 3000R/H/ 3000R/BH / 3000R/HBH
GT3500R / 3500R/H / 3500R/BH / 3000R/HBH



Key NO.	Parts No.	Parts name	Key NO.	Parts No.	Parts name
1	2YD-054-01	DRAG KNOB ASSEMBLY	56	2M2-006-01	OSCILLATING SLIDER CRANK
2	2E4-009-01	DRAG WASHER RETAINER	57	2M1-033-02	OSCILLATING SLIDER
3	2W3-014-01	EARED WASHER	58	2E2-009-01	F23M-060 SCREW
4	2W2-013-01	KEY WASHER	59	2B2-038-01	BODY COVER
5	2W1-052-01	050-187 WASHER	60	2E1-055-01	A26-100 SCREW
6	2YT-205-07	SPOOL TOTAL ASSEMBLY	61	2E1-031-01	A26-140 SCREW
7	2W2-020-01	KEY WASHER	62	2YH-240-01	HANDLE TOTAL ASSEMBLY
8	2L3-014-01	CLICK LEAF SPRING	63	2C3-042-01	029-080 WASHER
9	2F8-013-01	CLICK LEAF SPRING HOLDER	64	2H6-001-10	HANDLE SCREW CAP
10	2W2-015-01	KEY WASHER	65	2E1-045-01	A26-080 SCREW
11	2E3-007-01	ROTOR NUT	66	2F5-187-01	REAR COVER A
12	2M3-056-01	MAIN SHAFT	67	2F5-188-01	REAR COVER B
13	2E1-036-01	B26-040 SCREW	68	2E1-048-01	B22-080 SCREW
14	2R1-070-01	ROTOR	69	2A1-025-03	ANTI-REVERSE LEVER
15	2E2-004-01	B30M-060 SCREW	70	2E2-013-02	B20M-060 SCREW
16	2R4-094-01	BAIL TRIP COVER	GT3000R/H	SPECIAL PARTS	
17	2E1-016-02	B26-080 SCREW	6	2YT-205-08	SPOOL TOTAL ASSEMBLY
18	2E2-018-01	B30M-080 SCREW	47	2G2-078-01	PINION GEAR
19	2R2-031-01	BAIL ARM	52	2G1-061-02	DRIVE GEAR
20	2C1-034-01	LINE ROLLER COLLAR	GT3000R/BH	SPECIAL PARTS	
21	2Z1-012-05	407-2.5 BALL BEARING	62	2YH-242-01	HANDLE ASSEMBLY
22	2R6-020-01	LINE ROLLER	GT3000R/HBH	SPECIAL PARTS	
23	2C2-032-01	LINE ROLLER BUSH	6	2YT-205-08	SPOOL TOTAL ASSEMBLY
24	2YL-081-01	BAIL ASSEMBLY	47	2G2-078-01	PINION GEAR
25	2E3-019-01	BAIL HOLDER NUT	52	2G1-061-02	DRIVE GEAR
26	2Q3-056-01	BAIL TRIP LEVER SPING	62	2YH-242-01	HANDLE ASSEMBLY
27	2R5-089-01	BAIL TRIP LEVER	GT3500R	SPECIAL PARTS	
28	2F5-176-01	ROTOR COVER	6	2YT-206-07	SPOOL TOTAL ASSEMBLY
29	2E1-020-02	B22-055 SCREW	14	2R1-071-01	ROTOR
30	2R5-090-01	BAIL TRIP SHAFT	24	2YL-082-01	BAIL ASSEMBLY
31	2Q1-023-01	BAIL SPRING	27	2R5-091-01	BAIL TRIP LEVER
32	2C2-069-01	BAIL SPRING GUIDE	28	2F5-179-01	ROTOR COVER
33	2R4-095-01	BAIL SPRING COVER	GT3500R/H	SPECIAL PARTS	
34	2E1-029-01	B22-090 SCREW	6	2YT-206-08	SPOOL TOTAL ASSEMBLY
35	2F8-079-01	ANTI-REVERSE SPRING ANCHOR	14	2R1-071-01	ROTOR
36	2A4-021-01	ONE-WAY CLUTCH INNER TUBE	24	2YL-082-01	BAIL ASSEMBLY
37	2Q2-016-01	SPRING	27	2R5-091-01	BAIL TRIP LEVER
38	2F5-192-01	ROLLER CLUTCH RETAINER	28	2F5-179-01	ROTOR COVER
39	2F2-028-01	ANTI-REVERSE PAWL	47	2G2-078-01	PINION GEAR
40	2Z3-001-01	ROLLER	52	2G1-061-02	DRIVE GEAR
41	2A3-008-01	ANTI-REVERSE RATCHET	GT3500R/BH	SPECIAL PARTS	
42	2F8-078-01	CAGE	6	2YT-206-07	SPOOL TOTAL ASSEMBLY
43	2YZ-014-01	ONE-WAY CLUTCH BEARING ASSEMBLY	14	2R1-071-01	ROTOR
44	2E1-067-01	F26-090 SCREW	24	2YL-082-01	BAIL ASSEMBLY
45	2F5-193-01	BEARING RETAINER	27	2R5-091-01	BAIL TRIP LEVER
46	2Z1-003-05	714-5 BALL BEARING	28	2F5-179-01	ROTOR COVER
47	2G2-077-01	PINION GEAR	62	2YH-242-01	HANDLE ASSEMBLY
48	2A2-048-01	ANTI-REVERSE CAM	GT3500R/HBH	SPECIAL PARTS	
49	2Q3-009-01	ANTI-REVERSE SPRING	6	2YT-206-08	SPOOL TOTAL ASSEMBLY
50	2B1-063-01	BODY	14	2R1-071-01	ROTOR
51	2Z1-009-05	711-3 BALL BEARING	24	2YL-082-01	BAIL ASSEMBLY
52	2G1-048-02	DRIVE GEAR	27	2R5-091-01	BAIL TRIP LEVER
53	2W1-035-00	080-105 WASHER	28	2F5-179-01	ROTOR COVER
54	2Z1-010-05	812-3.5 BALL BEARING	47	2G2-078-01	PINION GEAR
55	2G3-041-01	OSCILLATING GEAR	52	2G1-061-02	DRIVE GEAR
			62	2YH-242-01	HANDLE ASSEMBLY