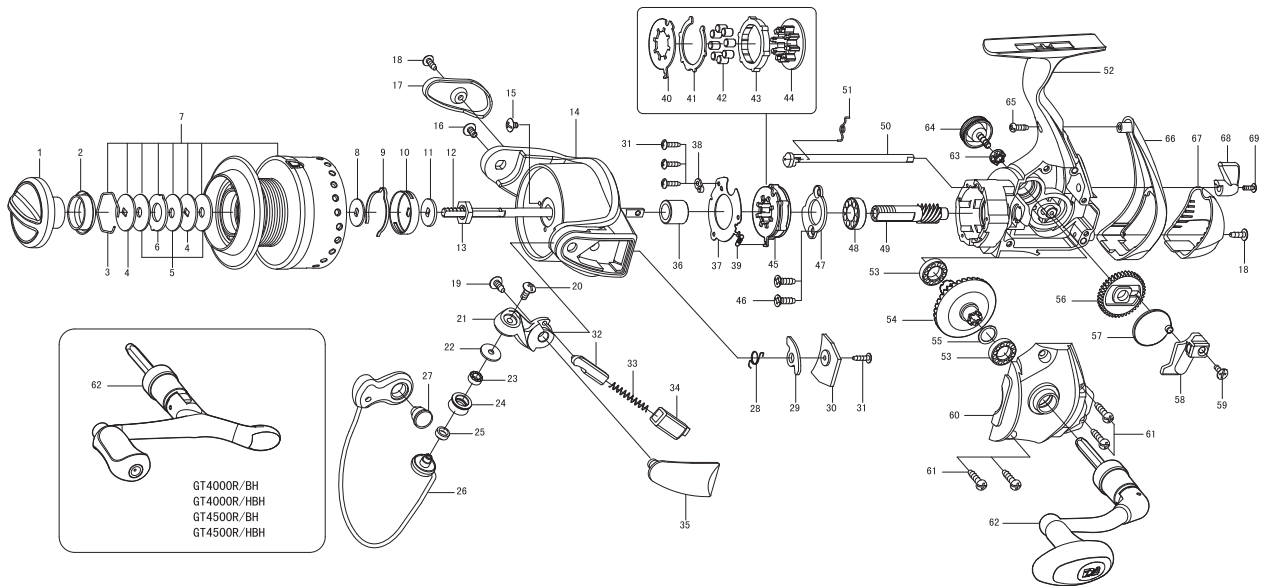


# SPINNING REEL

Please order by parts number, not key number  
 Bitte, Best.-Nr. angeben (Nicht "key"-nr.)  
 Veuillez indiquer le numero de la piece (Non "key" no.)

**GT4000R / 4000R/H / 4000R/BH / 4000R/HBH**  
**GT4500R / 4500R/H / 4500R/BH / 4500R/HBH**


**Key NO.**

| Key NO. | Parts No.  | Parts name                      |
|---------|------------|---------------------------------|
| 1       | 2YD-057-01 | DRAG KNOB ASSEMBLY              |
| 2       | 2E9-016-01 | PROOF WATER RING                |
| 3       | 2E4-009-01 | DRAG WASHER RETAINER            |
| 4       | 2W2-005-01 | KEY WASHER                      |
| 5       | 2W1-052-01 | 050-187 WASHER                  |
| 6       | 2W3-003-01 | EARED WASHER                    |
| 7       | 2YT-239-07 | SPOOL TOTAL ASSEMBLY            |
| 8       | 2W2-023-01 | KEY WASHER                      |
| 9       | 2L3-018-01 | CLICK LEAF SPRING               |
| 10      | 2F8-027-01 | CLICK LEAF SPRING HOLDER        |
| 11      | 2W2-024-01 | KEY WASHER                      |
| 12      | 2M3-077-01 | MAIN SHAFT                      |
| 13      | 2E3-002-01 | ROTOR NUT                       |
| 14      | 2R1-098-01 | ROTOR                           |
| 15      | 2E1-036-01 | B26-040 SCREW                   |
| 16      | 2E2-004-01 | B30M-060 SCREW                  |
| 17      | 2R4-120-01 | BAIL TRIP COVER                 |
| 18      | 2E1-016-02 | B26-080 SCREW                   |
| 19      | 2E1-037-01 | B30-080 SCREW                   |
| 20      | 2E2-018-01 | B30M-080 SCREW                  |
| 21      | 2R2-042-01 | BAIL ARM                        |
| 22      | 2C1-034-01 | LINE ROLLER COLLAR              |
| 23      | 2Z1-012-05 | 407-2.5 BALL BEARING            |
| 24      | 2R6-020-01 | LINE ROLLER                     |
| 25      | 2C2-032-01 | LINE ROLLER BUSH                |
| 26      | 2YL-106-01 | BAIL ASSEMBLY                   |
| 27      | 2E3-019-01 | BAIL HOLDER NUT                 |
| 28      | 2Q3-056-01 | BAIL TRIP LEVER SPRING          |
| 29      | 2R5-118-01 | BAIL TRIP LEVER                 |
| 30      | 2F5-224-01 | ROTOR COVER                     |
| 31      | 2E1-029-01 | B22-090 SCREW                   |
| 32      | 2R5-120-01 | BAIL TRIP SHAFT                 |
| 33      | 2Q1-079-01 | BAIL SPRING                     |
| 34      | 2C2-090-01 | BAIL SPRING GUIDE               |
| 35      | 2R4-121-01 | BAIL SPRING COVER               |
| 36      | 2A4-026-01 | ONE-WAY CLUTCH INNER TUBE       |
| 37      | 2F5-189-01 | ROLLER CLUTCH RETAINER          |
| 38      | 2F8-079-01 | ANTI-REVERSE SPRING ANCHOR      |
| 39      | 2Q2-016-01 | SPRING                          |
| 40      | 2F2-027-01 | ANTI-REVERSE PAWL               |
| 41      | 2W5-036-01 | WASHER                          |
| 42      | 2Z3-003-01 | ROLLER                          |
| 43      | 2A3-025-01 | ANTI-REVERSE RATCHET            |
| 44      | 2F8-082-01 | CAGE                            |
| 45      | 2YZ-017-01 | ONE-WAY CLUTCH BEARING ASSEMBLY |
| 46      | 2E1-068-01 | F30-100 SCREW                   |
| 47      | 2F5-203-01 | BEARING RETAINER                |
| 48      | 2Z1-005-05 | 816-5 BALL BEARING              |
| 49      | 2G2-071-01 | PINION GEAR                     |
| 50      | 2A2-027-01 | ANTI-REVERSE CAM                |
| 51      | 2Q3-009-01 | ANTI-REVERSE SPRING             |
| 52      | 2B1-080-01 | BODY                            |
| 53      | 2Z1-023-05 | 814-4 BALL BEARING              |
| 54      | 2G1-054-02 | DRIVE GEAR                      |
| 55      | 2W1-035-00 | 080-105 WASHER                  |

**Key NO.**

| Key NO.     | Parts No.     | Parts name            |
|-------------|---------------|-----------------------|
| 56          | 2G3-046-01    | OSCILLATING GEAR      |
| 57          | 2M2-009-01    | OSCILLATING CAM       |
| 58          | 2M1-042-01    | OSCILLATING SLIDER    |
| 59          | 2E2-014-02    | F26M-060 SCREW        |
| 60          | 2B2-039-01    | BODY COVER            |
| 61          | 2E1-006-02    | A30-130 SCREW         |
| 62          | 2YH-244-01    | HANDLE TOTAL ASSEMBLY |
| 63          | 2C3-042-01    | HANDLE SCREW SLEEVE   |
| 64          | 2H6-001-10    | HANDLE SCREW CAP      |
| 65          | 2E1-045-01    | A26-080 SCREW         |
| 66          | 2F5-222-01    | REAR COVER A          |
| 67          | 2F5-223-01    | REAR COVER B          |
| 68          | 2A1-025-03    | ANTI-REVERSE LEVER    |
| 69          | 2E2-013-02    | B20M-060 SCREW        |
| GT4000R/H   | SPECIAL PARTS |                       |
| 7           | 2YT-239-08    | SPOOL TOTAL ASSEMBLY  |
| 49          | 2G2-072-01    | PINION GEAR           |
| 54          | 2G1-055-02    | DRIVE GEAR            |
| GT4000R/BH  | SPECIAL PARTS |                       |
| 62          | 2YH-246-01    | HANDLE TOTAL ASSEMBLY |
| GT4000R/HBH | SPECIAL PARTS |                       |
| 7           | 2YT-239-08    | SPOOL TOTAL ASSEMBLY  |
| 49          | 2G2-072-01    | PINION GEAR           |
| 54          | 2G1-055-02    | DRIVE GEAR            |
| 62          | 2YH-246-01    | HANDLE TOTAL ASSEMBLY |
| GT4500R     | SPECIAL PARTS |                       |
| 7           | 2YT-240-07    | SPOOL TOTAL ASSEMBLY  |
| 14          | 2R1-099-01    | ROTOR                 |
| 26          | 2YL-107-01    | BAIL ASSEMBLY         |
| 29          | 2R5-119-01    | BAIL TRIP LEVER       |
| 30          | 2F5-225-01    | ROTOR COVER           |
| GT4500R/H   | SPECIAL PARTS |                       |
| 7           | 2YT-240-08    | SPOOL TOTAL ASSEMBLY  |
| 14          | 2R1-099-01    | ROTOR                 |
| 26          | 2YL-107-01    | BAIL ASSEMBLY         |
| 29          | 2R5-119-01    | BAIL TRIP LEVER       |
| 30          | 2F5-225-01    | ROTOR COVER           |
| 49          | 2G2-072-01    | PINION GEAR           |
| 54          | 2G1-055-02    | DRIVE GEAR            |
| GT4500R/BH  | SPECIAL PARTS |                       |
| 7           | 2YT-240-07    | SPOOL TOTAL ASSEMBLY  |
| 14          | 2R1-099-01    | ROTOR                 |
| 26          | 2YL-107-01    | BAIL ASSEMBLY         |
| 29          | 2R5-119-01    | BAIL TRIP LEVER       |
| 30          | 2F5-225-01    | ROTOR COVER           |
| 49          | 2G2-072-01    | PINION GEAR           |
| 54          | 2G1-055-02    | DRIVE GEAR            |
| GT4500R/HBH | SPECIAL PARTS |                       |
| 7           | 2YT-240-08    | SPOOL TOTAL ASSEMBLY  |
| 14          | 2R1-099-01    | ROTOR                 |
| 26          | 2YL-107-01    | BAIL ASSEMBLY         |
| 29          | 2R5-119-01    | BAIL TRIP LEVER       |
| 30          | 2F5-225-01    | ROTOR COVER           |
| 49          | 2G2-072-01    | PINION GEAR           |
| 54          | 2G1-055-02    | DRIVE GEAR            |

**Parts name**

| Parts name                |
|---------------------------|
| OSCILLATING GEAR          |
| OSCILLATING CAM           |
| OSCILLATING SLIDER        |
| F26M-060 SCREW            |
| BODY COVER                |
| A30-130 SCREW             |
| HANDLE TOTAL ASSEMBLY     |
| HANDLE SCREW SLEEVE       |
| HANDLE SCREW CAP          |
| A26-080 SCREW             |
| REAR COVER A              |
| REAR COVER B              |
| ANTI-REVERSE LEVER        |
| B20M-060 SCREW            |
| SPOOL TOTAL ASSEMBLY      |
| PINION GEAR               |
| DRIVE GEAR                |
| HANDLE TOTAL ASSEMBLY     |
| SPOOL TOTAL ASSEMBLY      |
| PINION GEAR               |
| DRIVE GEAR                |
| HANDLE TOTAL ASSEMBLY     |
| SPOOL TOTAL ASSEMBLY      |
| ROTOR                     |
| BAIL ASSEMBLY             |
| BAIL TRIP LEVER           |
| ROTOR COVER               |
| SPOOL TOTAL ASSEMBLY      |
| ROTOR                     |
| BAIL ASSEMBLY             |
| BAIL TRIP LEVER           |
| ROTOR COVER               |
| HANDLE TOTAL ASSEMBLY     |
| GT4500R/BH SPECIAL PARTS  |
| SPOOL TOTAL ASSEMBLY      |
| ROTOR                     |
| BAIL ASSEMBLY             |
| BAIL TRIP LEVER           |
| ROTOR COVER               |
| HANDLE TOTAL ASSEMBLY     |
| GT4500R/HBH SPECIAL PARTS |
| SPOOL TOTAL ASSEMBLY      |
| ROTOR                     |
| BAIL ASSEMBLY             |
| BAIL TRIP LEVER           |
| ROTOR COVER               |
| HANDLE TOTAL ASSEMBLY     |
| GT4500R/HBH SPECIAL PARTS |
| SPOOL TOTAL ASSEMBLY      |
| ROTOR                     |
| BAIL ASSEMBLY             |
| BAIL TRIP LEVER           |
| ROTOR COVER               |
| PINION GEAR               |
| DRIVE GEAR                |
| HANDLE TOTAL ASSEMBLY     |