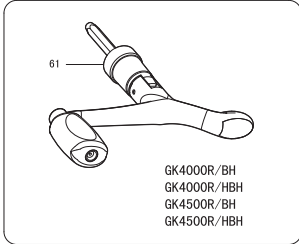
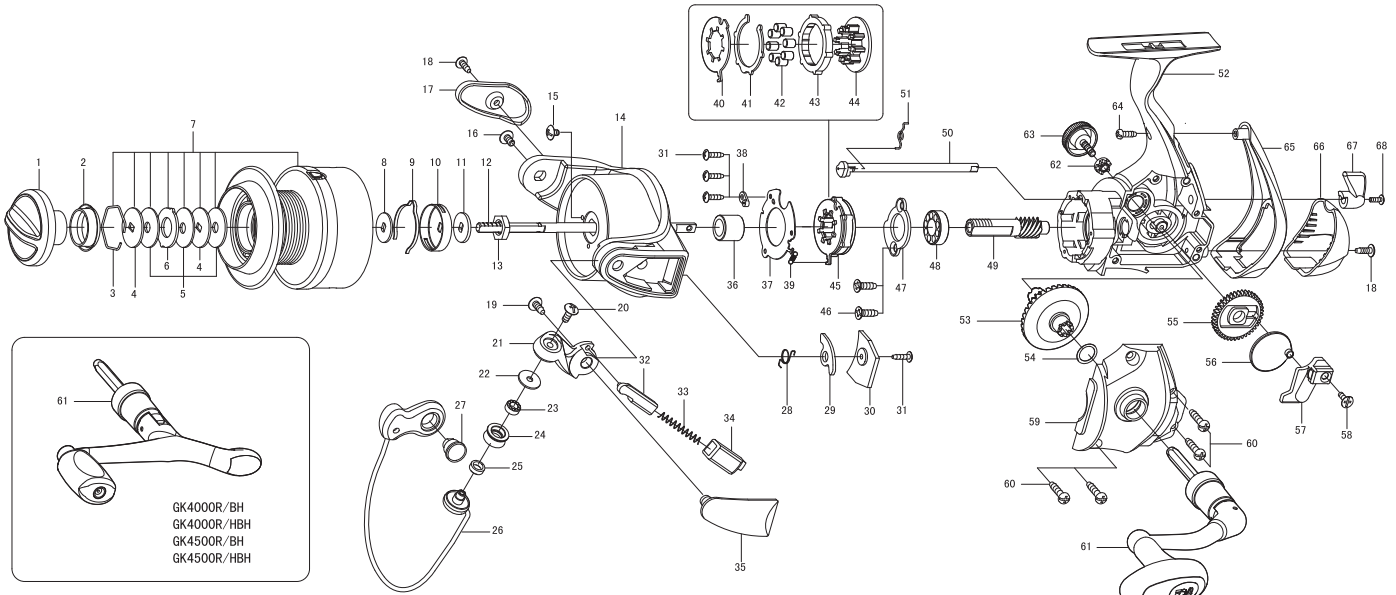




SPINNING REEL

Please order by parts number, not key number
 Bitte, Best.-Nr. angeben (Nicht "key" -nr.)
 Veuillez indiquer le numero de la piece (Non "key" no.)

GK4000R / 4000R/H / 4000R/BH / 4000R/HBH GK4500R / 4500R/H / 4500R/BH / 4500R/HBH



Key NO.	Parts No.	Parts name	Key NO.	Parts No.	Parts name
1	2YD-030-01	DRAG KNOB ASSEMBLY	56	2M2-009-01	OSCILLATING CAM
2	2E9-016-01	PROOF WATER RING	57	2M1-042-01	OSCILLATING SLIDER
3	2E4-009-01	DRAG WASHER RETAINER	58	2E2-014-02	F26M-060 SCREW
4	2W2-005-01	KEY WASHER	59	2YC-096-01	BODY COVER ASSEMBLY
5	2W1-052-01	050-187 WASHER	60	2E1-006-02	A30-130 SCREW
6	2W3-003-01	EARED WASHER	61	2YH-245-01	HANDLE TOTAL ASSEMBLY
7	2YT-239-09	SPOOL TOTAL ASSEMBLY	62	2C3-042-01	HANDLE SCREW SLEEVE
8	2W2-023-01	KEY WASHER	63	2H6-001-10	HANDLE SCREW CAP
9	2L3-018-01	CLICK LEAF SPRING	64	2E1-045-01	A26-080 SCREW
10	2F8-027-01	CLICK LEAF SPRING HOLDER	65	2F5-222-02	REAR COVER A
11	2W2-024-01	KEY WASHER	66	2F5-223-02	REAR COVER B
12	2M3-077-01	MAIN SHAFT	67	2A1-025-03	ANTI-REVERSE LEVER
13	2E3-002-01	ROTOR NUT	68	2E2-013-02	B20M-060 SCREW
14	2R1-098-02	ROTOR	GK4000R/H	SPECIAL PARTS	
15	2E1-036-01	B26-040 SCREW	7	2YT-239-10	SPOOL TOTAL ASSEMBLY
16	2E2-004-01	B30M-060 SCREW	49	2G2-072-01	PINION GEAR
17	2R4-120-02	BAIL TRIP COVER	53	2G1-055-02	DRIVE GEAR
18	2E1-016-02	B26-080 SCREW	GK4000R/BH	SPECIAL PARTS	
19	2E1-037-01	B30-080 SCREW	61	2YH-247-01	HANDLE TOTAL ASSEMBLY
20	2E2-018-01	B30M-080 SCREW	GK4000R/HBH	SPECIAL PARTS	
21	2R2-042-01	BAIL ARM	7	2YT-239-10	SPOOL TOTAL ASSEMBLY
22	2C1-034-01	LINE ROLLER COLLAR	49	2G2-072-01	PINION GEAR
23	2Z1-012-05	407-2.5 BALL BEARING	53	2G1-055-02	DRIVE GEAR
24	2R6-020-01	LINE ROLLER	61	2YH-247-01	HANDLE TOTAL ASSEMBLY
25	2C2-032-01	LINE ROLLER BUSH	GK4500R	SPECIAL PARTS	
26	2YL-106-01	BAIL ASSEMBLY	7	2YT-240-09	SPOOL TOTAL ASSEMBLY
27	2E3-019-01	BAIL HOLDER NUT	14	2R1-099-02	ROTOR
28	2Q3-056-01	BAIL TRIP LEVER SPRING	26	2YL-107-01	BAIL ASSEMBLY
29	2R5-118-01	BAIL TRIP LEVER	29	2R5-119-01	BAIL TRIP LEVER
30	2F5-224-02	ROTOR COVER	30	2F5-225-02	ROTOR COVER
31	2E1-029-01	B22-090 SCREW	GK4500R/H	SPECIAL PARTS	
32	2R5-120-01	BAIL TRIP SHAFT	7	2YT-240-10	SPOOL TOTAL ASSEMBLY
33	2Q1-079-01	BAIL SPRING	14	2R1-099-02	ROTOR
34	2C2-090-01	BAIL SPRING GUIDE	26	2YL-107-01	BAIL ASSEMBLY
35	2R4-121-02	BAIL SPRING COVER	29	2R5-119-01	BAIL TRIP LEVER
36	2A4-026-01	ONE-WAY CLUTCH INNER TUBE	30	2F5-225-02	ROTOR COVER
37	2F5-189-01	ROLLER CLUTCH RETAINER	49	2G2-072-01	PINION GEAR
38	2F8-079-01	ANTI-REVERSE SPRING ANCHOR	53	2G1-055-02	DRIVE GEAR
39	2Q2-016-01	SPRING	GK4500R/BH	SPECIAL PARTS	
40	2F2-027-01	ANTI-REVERSE PAWL	7	2YT-240-09	SPOOL TOTAL ASSEMBLY
41	2W5-036-01	WASHER	14	2R1-099-02	ROTOR
42	2Z3-003-01	ROLLER	26	2YL-107-01	BAIL ASSEMBLY
43	2A3-025-01	ANTI-REVERSE RATCHET	29	2R5-119-01	BAIL TRIP LEVER
44	2F8-082-01	CAGE	30	2F5-225-02	ROTOR COVER
45	2YZ-017-01	ONE-WAY CLUTCH BEARING ASSEMBLY	61	2YH-247-01	HANDLE TOTAL ASSEMBLY
46	2E1-068-01	F30-100 SCREW	GK4500R/HBH	SPECIAL PARTS	
47	2F5-203-01	BEARING RETAINER	7	2YT-240-10	SPOOL TOTAL ASSEMBLY
48	2Z1-005-05	816-5 BALL BEARING	14	2R1-099-02	ROTOR
49	2G2-071-01	PINION GEAR	26	2YL-107-01	BAIL ASSEMBLY
50	2A2-027-01	ANTI-REVERSE CAM	29	2R5-119-01	BAIL TRIP LEVER
51	2Q3-009-01	ANTI-REVERSE SPRING	30	2F5-225-02	ROTOR COVER
52	2YB-151-01	BODY ASSEMBLY	49	2G2-072-01	PINION GEAR
53	2G1-054-02	DRIVE GEAR	53	2G1-055-02	DRIVE GEAR
54	2W1-035-00	080-105 WASHER	61	2YH-247-01	HANDLE TOTAL ASSEMBLY
55	2G3-046-01	OSCILLATING GEAR			