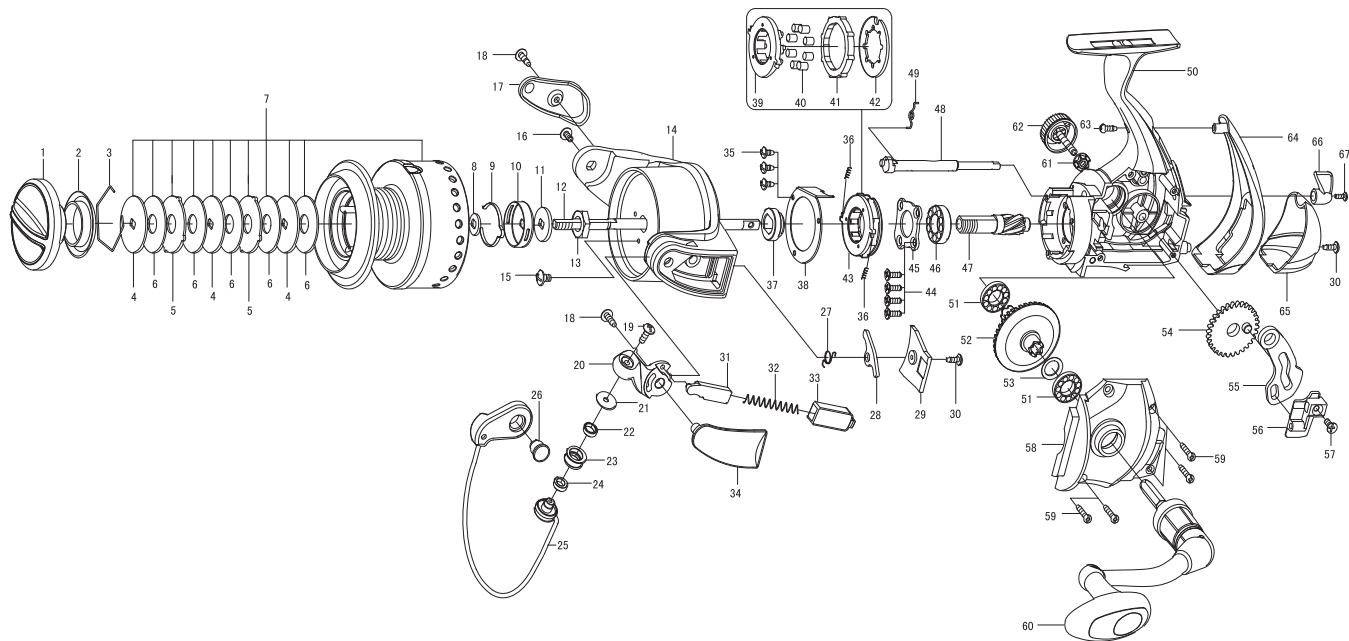




SPINNING REEL

GS6000R / 6000R/H / 7000R / 7000R/H

Please order by parts number, not key number
 Bitte, Best.-Nr. angeben (Nicht "key" -nr.)
 Veuillez indiquer le numero de la piece (Non "key" no.)



| Key NO. | Parts No. | Parts name | Key NO. | Parts No. | Parts name |
|---------|------------|---------------------------------|-----------|---------------|--------------------------|
| 1 | 2YD-049-03 | DRAG KNOB ASSEMBLY | 44 | 2E1-063-01 | F26-070 SCREW |
| 2 | 2E9-015-01 | PROOF WATER RING | 45 | 2F5-178-01 | BEARING RETAINER |
| 3 | 2E4-003-01 | DRAG WASHER RETAINER | 46 | 2Z1-008-05 | 1020-5 BALL BEARING |
| 4 | 2W2-048-01 | KEY WASHER | 47 | 2G2-057-01 | PINION GEAR |
| 5 | 2W3-027-01 | EARED WASHER | 48 | 2A2-066-01 | ANTI-REVERSE CAM |
| 6 | 2W1-175-01 | 100-300 WASHER | 49 | 2Q3-072-01 | ANTI-REVERSE SPRING |
| 7 | 2YT-176-11 | SPOOL TOTAL ASSEMBLY | 50 | 2B1-082-03 | BODY |
| 8 | 2W2-011-01 | KEY WASHER | 51 | 2Z1-007-05 | 917-4 BALL BEARING |
| 9 | 2L3-015-01 | CLICK LEAF SPRING | 52 | 2G1-052-02 | DRIVE GEAR |
| 10 | 2F8-019-01 | CLICK LEAF SPRING HOLDER | 53 | 2W1-014-01 | 091-130 WASHER |
| 11 | 2W2-019-01 | KEY WASHER | 54 | 2G3-045-01 | OSCILLATING GEAR |
| 12 | 2M3-068-01 | MAIN SHAFT | 55 | 2M2-008-01 | OSCILLATING SLIDER CRANK |
| 13 | 2E3-003-01 | ROTOR NUT | 56 | 2M1-041-01 | OSCILLATING SLIDER |
| 14 | 2R1-069-03 | ROTOR | 57 | 2E2-056-01 | F30M-060 SCREW |
| 15 | 2E1-019-01 | D26-060 SCREW | 58 | 2B2-051-03 | BODY COVER |
| 16 | 2E2-004-01 | B30M-060 SCREW | 59 | 2E1-006-02 | A30-130 SCREW |
| 17 | 2R4-091-03 | BAIL TRIP COVER | 60 | 2YH-249-02 | HANDLE TOTAL ASSMBLY |
| 18 | 2E1-011-01 | B30-100 SCREW | 61 | 2C3-047-01 | HANDLE SCREW SLEEVE |
| 19 | 2E2-007-01 | B30M-100 SCREW | 62 | 2H6-002-09 | HANDLE SCREW CAP |
| 20 | 2R2-030-01 | BAIL ARM | 63 | 2E1-055-01 | A26-100 SCREW |
| 21 | 2C1-049-01 | LINE ROLLER COLLAR | 64 | 2F5-219-02 | REAR COVER A |
| 22 | 2Z1-001-05 | 508-2.5 BALL BEARING | 65 | 2F5-220-01 | REAR COVER B |
| 23 | 2R6-018-01 | LINE ROLLER | 66 | 2A1-025-03 | ANTI-REVERSE LEVER |
| 24 | 2C1-068-01 | COLLAR | 67 | 2E2-013-02 | B20M-060 SCREW |
| 25 | 2YL-080-01 | BAIL ASSEMBLY | GS7000R | SPECIAL PARTS | |
| 26 | 2E3-015-02 | BAIL HOLDER NUT | 7 | 2YT-177-11 | SPOOL TOTAL ASSEMBLY |
| 27 | 2Q3-056-01 | BAIL TRIP LEVER SPRING | 14 | 2R1-072-03 | ROTOR |
| 28 | 2R5-087-01 | BAIL TRIP LEVER | 25 | 2YL-083-01 | BAIL ASSEMBLY |
| 29 | 2F5-217-03 | ROTOR COVER | 28 | 2R5-092-01 | BAIL TRIP LEVER |
| 30 | 2E1-016-02 | B26-080 SCREW | 29 | 2F5-218-03 | ROTOR COVER |
| 31 | 2R5-088-01 | BAIL TRIP SHAFT | GS6000R/H | SPECIAL PARTS | |
| 32 | 2Q1-066-01 | BAIL SPRING | 7 | 2YT-176-12 | SPOOL TOTAL ASSEMBLY |
| 33 | 2C2-068-01 | BAIL SPRING GUIDE | 47 | 2G2-070-01 | PINION GEAR |
| 34 | 2R4-092-03 | BAIL SPRING COVER | 52 | 2G1-053-02 | DRIVE GEAR |
| 35 | 2E1-015-02 | B26-060 SCREW | GS7000R/H | SPECIAL PARTS | |
| 36 | 2Q1-071-01 | CAGE SPRING | 7 | 2YT-177-12 | SPOOL TOTAL ASSEMBLY |
| 37 | 2A4-019-01 | ONE-WAY CLUTCH INNER TUBE | 14 | 2R1-072-03 | ROTOR |
| 38 | 2F5-196-01 | ROLLER CLUTCH RETAINER | 25 | 2YL-083-01 | BAIL ASSEMBLY |
| 39 | 2F8-084-01 | CAGE | 28 | 2R5-092-01 | BAIL TRIP LEVER |
| 40 | 2Z3-003-01 | ROLLER | 29 | 2F5-218-03 | ROTOR COVER |
| 41 | 2A3-009-01 | ANTI-REVERSE RATCHET | 47 | 2G2-070-01 | PINION GEAR |
| 42 | 2F2-035-01 | ANTI-REVERSE PAWL | 52 | 2G1-053-02 | DRIVE GEAR |
| 43 | 2YZ-015-01 | ONE-WAY CLUTCH BEARING ASSEMBLY | | | |