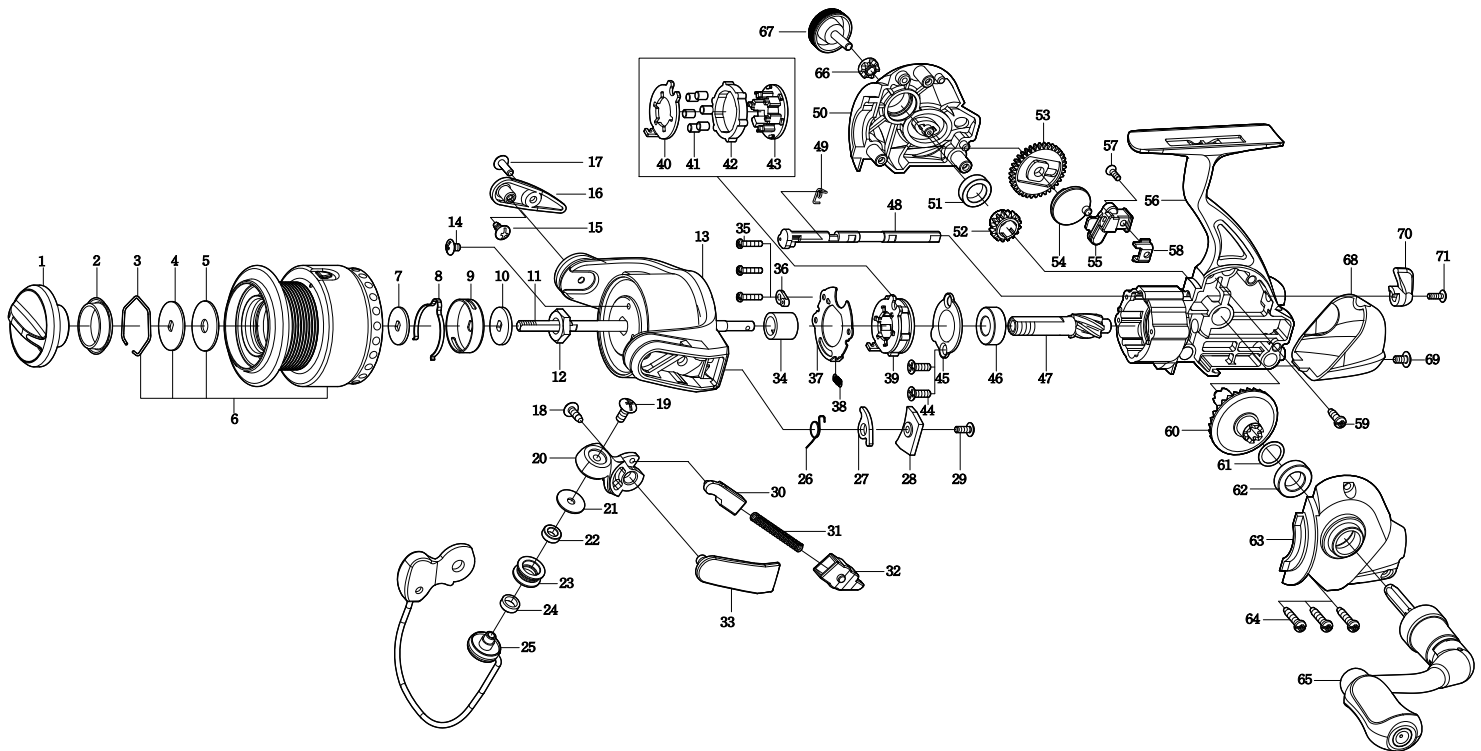




SPINNING REEL

SCRAMBLER

SS2000 /SS2500



Key NO.	Parts No.	Parts name	Key NO.	Parts No.	Parts name
1	2YD-055-05	DRAG KNOB ASSEMBLY	39	2YZ-014-01	ONE-WAY CLUTCH BEARING ASSEMBLY
2	2E9-019-01	PROOF WATER RING	40	2F2-028-01	ANTI-REVERSE PAWL
3	2E4-009-01	DRAG WASHER RETAINER	41	2Z3-001-01	ROLLER
4	2W2-013-02	KEY WASHER	42	2A3-008-01	ANTI-REVERSE RATCHET
5	2W1-052-02	050-187 WASHER	43	2F8-078-01	CAGE
6	2YT-382-03	SPOOL TOTAL ASSEMBLY	44	2E2-014-02	F26M-060 SCREW
7	2W2-020-01	KEY WASHER	45	2F5-193-01	BEARING RETAINER
8	2L3-015-01	CLICK LEAF SPRING	46	2Z1-003-05	714-5 BALL BEARING
9	2F8-019-02	CLICK LEAF SPRING HOLDER	47	2G2-094-01	PINION GEAR
10	2W2-015-01	KEY WASHER	48	2A2-078-01	ANTI-REVERSE CAM
11	2M3-092-01	MAIN SHAFT	49	2Q3-009-01	ANTI-REVERSE SPRING
12	2E3-007-01	ROTOR NUT	50	2B2-063-06	BODY COVER (R)
13	2R1-108-02	ROTOR	51	2Z1-010-05	812-3.5 BALL BEARING
14	2E2-003-01	B26M-036 SCREW	52	2G3-068-01	DRIVE PINION
15	2E1-015-04	B26-060 SCREW	53	2G3-060-01	OSCILLATING GEAR
16	2R4-136-01	BAIL TRIP COVER	54	2M2-010-01	OSCILLATING CAM
17	2E2-005-05	B26M-080 SCREW	55	2M1-046-01	OSCILLATING SLIDER
18	2E1-016-04	B26-080 SCREW	56	2YB-162-04	BODY ASSEMBLY
19	2E2-090-02	B30M-110 SCREW	57	2E2-009-02	F23M-060 SCREW
20	2R2-047-02	BAIL ARM	58	2E5-039-01	OSCILLATING SLIDER RETAINER
21	2C1-034-01	LINE ROLLER COLLAR	59	2E1-060-01	A26-060 SCREW
22	2Z1-012-05	407-2.5 BALL BEARING	60	2G1-083-01	DRIVE GEAR
23	2R6-020-01	LINE ROLLER	61	2W1-019-00	071-103 WASHER
24	2C2-032-01	LINE ROLLER BUSH	62	2Z1-039-05	713-4 BALL BEARING
25	2YL-118-02	BAIL ASSEMBLY	63	2B2-064-06	BODY COVER (L)
26	2Q3-084-01	BAIL TRIP LEVER SPING	64	2E1-005-04	A26-120 SCREW
27	2R5-083-01	BAIL TRIP LEVER B	65	2YH-228-01	HANDLE TOTAL ASSEMBLY
28	2F5-280-02	ROTOR COVER	66	2C3-042-01	HANDLE SCREW SLEEVE
29	2E2-051-03	B23M-060 SCREW	67	2H6-001-12	HANDLE SCREW CAP
30	2R5-090-01	BAIL TRIP SHAFT	68	2F5-275-01	REAR COVER
31	2Q1-023-01	BAIL SPRING	69	2E2-006-05	B26M-050 SCREW
32	2C2-097-01	BAIL SPRING GUIDE	70	2A1-022-06	ANTI-REVERSE LEVER
33	2R4-135-01	BAIL SPRING COVER	71	2E2-013-04	B20M-060 SCREW
34	2A4-021-01	ONE-WAY CLUTCH INNER TUBE			
35	2E2-013-02	B20M-060 SCREW	SS2500	SPECIAL PARTS	
36	2F8-079-01	ANTI-REVERSE SPRING ANCHOR	6	2YT-366-03	SPOOL TOTAL ASSEMBLY
37	2F5-192-01	ROLLER CLUTCH RETAINER	8	2L3-014-01	CLICK LEAF SPRING
38	2Q2-016-01	SPRING	9	2F8-013-01	CLICK LEAF SPRING HOLDER