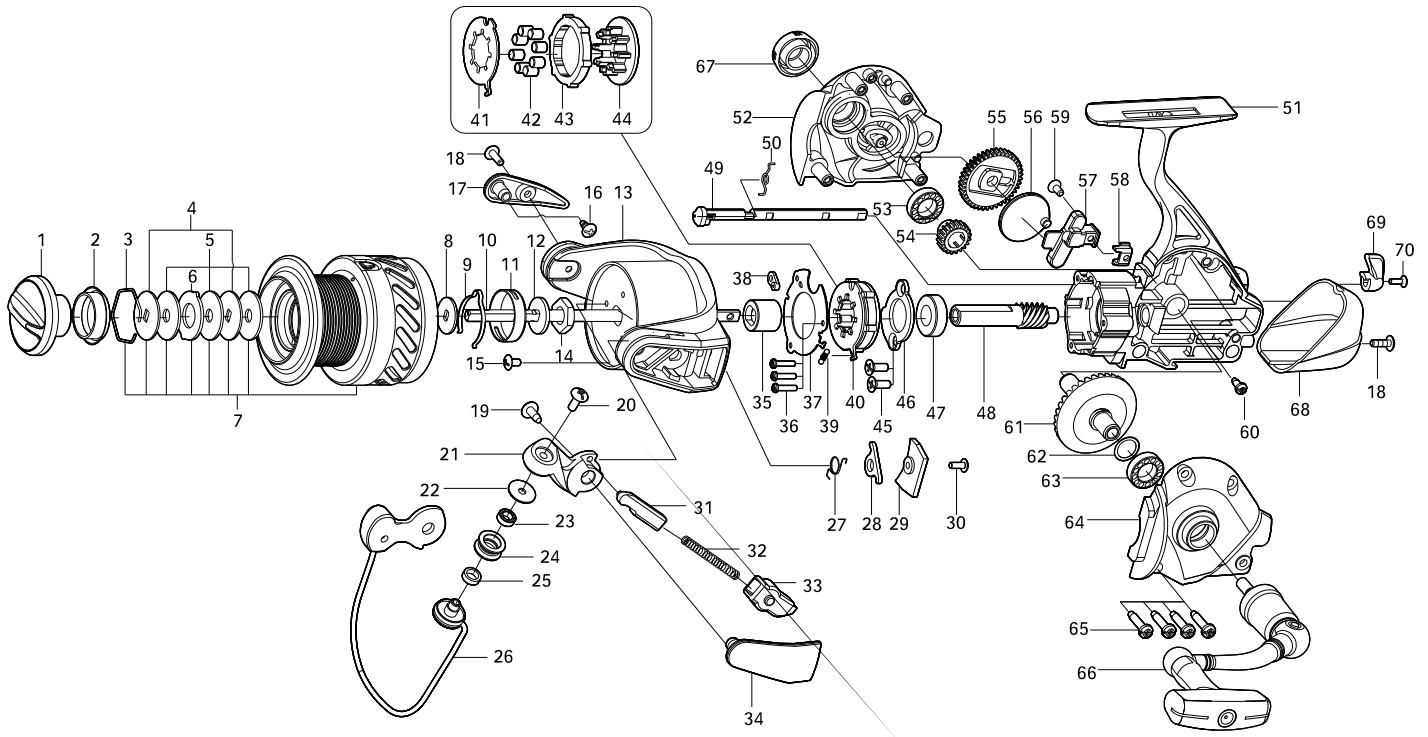




## SPINNING REEL

## SCRAMBLER

## ST3500 / ST4000

**Key NO.****Parts No.****Parts name**

1	2YD-058-04	DRAG KNOB ASSEMBLY
2	2E9-016-01	PROOF WATER RING
3	2E4-009-01	DRAG WASHER RETAINER
4	2W2-005-01	KEY WASHER
5	2W1-052-01	050-187 WASHER
6	2W3-003-01	EARED WASHER
7	2YT-301-03	SPOOL TOTAL ASSEMBLY
8	2W2-023-01	KEY WASHER
9	2L3-015-01	CLICK LEAF SPRING
10	2M3-093-01	MAIN SHAFT
11	2F8-019-03	CLICK LEAF SPRING HOLDER
12	2W2-024-01	KEY WASHER
13	2R1-109-01	ROTOR
14	2E3-002-01	ROTOR NUT
15	2E2-006-03	B26M-050 SCREW
16	2E1-015-04	B26-060 SCREW
17	2R4-138-01	BAIL TRIP COVER
18	2E2-005-05	B26M-080 SCREW
19	2E1-037-03	B30-080 SCREW
20	2E2-090-02	B30M-110 SCREW
21	2R2-042-06	BAIL ARM
22	2C1-034-01	LINE ROLLER COLLAR
23	2Z1-012-05	407-2.5 BALL BEARING
24	2R6-020-01	LINE ROLLER
25	2C2-032-01	LINE ROLLER BUSH
26	2YL-119-01	BAIL ASSEMBLY
27	2Q3-056-01	BAIL TRIP LEVER SPRING
28	2R5-107-01	BAIL TRIP LEVER
29	2F5-281-01	ROTOR COVER
30	2E2-051-03	B23M-060 SCREW
31	2R5-120-01	BAIL TRIP SHAFT
32	2Q1-079-01	BAIL SPRING
33	2C2-098-01	BAIL SPRING GUIDE
34	2R4-137-01	BAIL SPRING COVER
35	2A4-026-01	ONE-WAY CLUTCH INNER TUBE
36	2E2-013-02	B20M-060 SCREW
37	2F5-189-01	ROLLER CLUTCH RETAINER

**Key NO.****Parts No.****Parts name**

38	2F8-079-01	ANTI-REVERSE SPRING ANCHOR
39	2Q2-016-01	SPRING
40	2YZ-017-01	ONE-WAY CLUTCH BEARING ASSEMBLY
41	2F2-027-01	ANTI-REVERSE PAWL
42	2Z3-003-01	ROLLER
43	2A3-025-01	ANTI-REVERSE RATCHET
44	2F8-082-01	CAGE
45	2E2-011-02	F30M-080 SCREW
46	2F5-203-01	BEARING RETAINER
47	2Z1-005-05	816-5 BALL BEARING
48	2G2-095-01	PINION GEAR
49	2A2-027-01	ANTI-REVERSE CAM
50	2Q3-009-01	ANTI-REVERSE SPRING
51	2YB-163-03	BODY ASSEMBLY
52	2B2-065-05	BODY COVER(R)
53	2Z1-023-05	814-4 BALL BEARING
54	2G3-069-01	DRIVE PINION
55	2G3-079-01	OSCILLATING GEAR
56	2M2-014-01	OSCILLATING CAM
57	2M1-047-01	OSCILLATING SLIDER
58	2E5-039-01	OSCILLATING SLIDER RETAINER
59	2E2-009-02	F23M-060 SCREW
60	2E1-060-01	A26-060 SCREW
61	2G1-099-01	DRIVE GEAR
62	2W1-019-00	071-103 WASHER
63	2Z1-039-05	713-4 BALL BEARING
64	2B2-066-05	BODY COVER(L)
65	2E1-006-04	A30-130 SCREW
66	2YH-279-01	HANDLE TOTAL ASSEMBLY
67	2H6-015-03	HANDLE SCREW CAP
68	2F5-276-01	REAR COVER
69	2A1-022-05	ANTI-REVERSE LEVER
70	2E2-013-04	B20M-060 SCREW
ST4000	SPECIAL PARTS	
7	2YT-302-03	SPOOL TOTAL ASSEMBLY
9	2L3-014-01	CLICK LEAF SPRING
11	2F8-013-02	CLICK LEAF SPRING HOLDER